

**Stage 3 Site-Specific Assessment of the James Taggart Site (BaHb-19),  
Melancthon Pit Expansion,  
Part of Lots 13 and 14, Concession 4 Old Survey,  
Township of Melancthon,  
Dufferin County, Ontario**

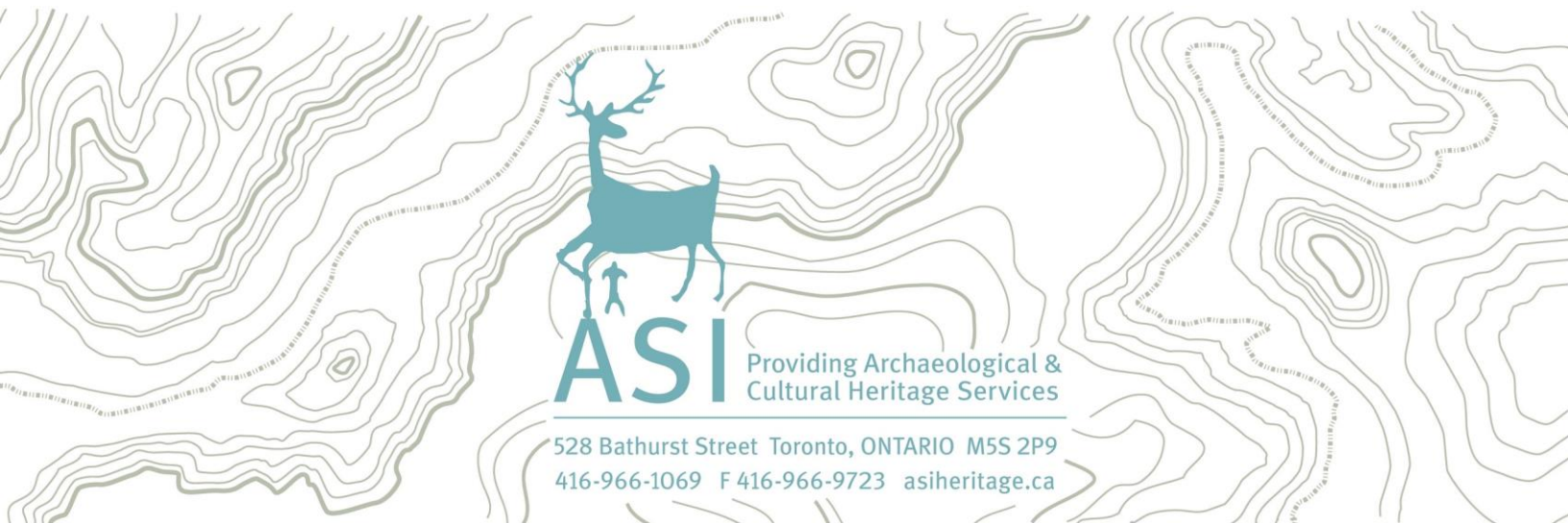
**ORIGINAL REPORT**

Prepared for:

**Duivenvoorden Haulage Ltd.**  
3425 Ninth Line,  
Innisfil, Ontario L95 3Z6  
T 705-436-4999

Archaeological Licence P125 (Eva MacDonald)  
MHSTCI PIF# P125-0313-2021  
ASI File 18MT-063

3 November, 2021



**Stage 3 Site-Specific Assessment of the James Taggart Site (BaHb-19),  
Melancthon Pit Expansion, Part of Lots 13 and 14, Concession 4 Old Survey,  
Township of Melancthon, Dufferin County, Ontario**

**EXECUTIVE SUMMARY**

Archaeological Services Inc. (ASI) was retained by Duivenvoorden Haulage Ltd. to conduct the Stage 3 site-specific assessment of the historical James Taggart site (BaHb-19) located within the Melancthon Pit Expansion in Dufferin County, Ontario. The assessment was completed under the project management of Ms. Eva MacDonald and the field direction of Dr. Poorya Kashani (P1133) under MacDonald's license (MHSTCI PIF# P125-0313-2021). All field work was completed in accordance with the 2011 *Standards and Guidelines for Consultant Archaeologists* (S&G).

The James Taggart site (BaHb-19) is located on the east half of Lot 14, Concession 4 Old Survey, Township of Melancthon and was documented during the Stage 2 pedestrian survey of agricultural land. It presented as a scatter of Euro-Canadian material that measured 72 m north-south by 50 m east-west. Archival research indicated that the Crown land patent for Lot 14 was awarded to Irish immigrant James Taggart in 1867. Taggart and his wife Jane were responsible for bringing the 100-acre farm into agricultural production starting in the early 1850s. They raised a family of four children in a log cabin that was replaced with a nine-room house during the time that son William Taggart and his family operated the farm in the late nineteenth century.

The Stage 3 assessment of the James Taggart site (BaHb-19) was recommended to determine the nature and extent of the cultural deposits. It was initiated on August 16, 2021 and included a controlled surface pickup (CSP) followed by the hand excavation of 61 one-metre-square test units within an area defined by the Stage 2 site limits and the results of the Stage 3 CSP. Excavation continued in the core until artifact yields were consistently low on the periphery. In total, 1,748 Euro-Canadian artifacts that largely pre-date 1870 were recovered.

Together, the archaeological and archival data suggest that the location of the original Taggart family log cabin was not occupied much later than the early 1870s. The low frequency of twentieth-century material culture on the archaeological site indicates that there was minimal overlap in land use with respect to the homelots occupied by the two generations of the Taggart family that farmed the east half of Lot 14. The site, therefore, represents a single-family occupation tightly dated from the early 1850s to the early 1870s and meets the MHSTCI criteria of a site type with further cultural heritage value or interest. A Stage 4 mitigation of impacts is required in accordance with the S&G.



## **ARCHAEOLOGICAL SERVICES INC.**

### **PROJECT PERSONNEL**

<i>Project Manager and Project Director:</i>	Eva MacDonald, MSc (P125) Senior Archaeologist   Manager of Historical Archaeology, Mitigation Division
<i>Field Director:</i>	Poorya Kashani, PhD (R1133) Senior Archaeologist   Field Director, Planning Division
<i>Field Archaeologists:</i>	Wesley Oldham, BA Hons (R292) Senior Archaeologist   Field Director, Mitigation Division Marc Dibenedetto, BA Hons Evelyn Fransoo Elliot Gini Brent Hueglin Jacob Roberts, BA Hons (R1291) Robert Skrepnek, BA Hons
<i>Artifact Processing:</i>	Danielle Storey, BA Archaeologist   Laboratory Coordinator, Operations Division  Natasa Zdjelar, MSc Archaeologist   Laboratory Technician, Operations Division
<i>Archival Research:</i>	Brian Narhi, MA, Project Historian
<i>Artifact Analysis:</i>	Janis Mitchell, MA (R1143) Archaeologist   Analyst, Operations Division
<i>Report Preparation:</i>	Eva MacDonald
<i>Graphics:</i>	Andrew Clish, BES (PO46) Senior Archaeologist   Senior Field Director, Operations Division  Robin Latour, MPhil, PDip Associate Archaeologist   Geomatics Specialist, Operations Division



## TABLE OF CONTENTS

EXECUTIVE SUMMARY .....	I
PROJECT PERSONNEL .....	II
TABLE OF CONTENTS .....	III
1.0 PROJECT CONTEXT .....	1
1.1 DEVELOPMENT CONTEXT.....	1
1.2 HISTORICAL CONTEXT .....	1
1.3 ARCHAEOLOGICAL CONTEXT.....	2
2.0 FIELD METHODS.....	3
3.0 RECORD OF FINDS .....	4
3.1 ARTIFACT DISTRIBUTION .....	4
3.2 POTENTIAL CULTURAL FEATURES .....	4
3.3 ARTIFACT INVENTORY .....	4
3.4 INVENTORY OF THE DOCUMENTARY RECORD .....	10
4.0 ANALYSIS AND CONCLUSIONS.....	10
5.0 RECOMMENDATIONS .....	11
6.0 ADVICE ON COMPLIANCE WITH LEGISLATION .....	12
7.0 BIBLIOGRAPHY AND SOURCES.....	13
8.0 IMAGES .....	15
9.0 MAPS .....	22

## LIST OF MAPS

Figure 1: Location of the Subject Property .....	22
Figure 2: The Stage 3 site-specific assessment of the James Taggart site (BaHb-19). .....	23

## LIST OF IMAGES

Plate 1: Surface conditions for optimum visibility during the CSP at the Taggart site (BaHb-19). .....	15
Plate 2: Looking west over the site during the CSP at the Taggart site (BaHb-19). .....	15
Plate 3: Screening the ploughzone during the excavation of test unit 490N-200E, looking west. ....	16
Plate 4: Typical ploughzone/ B-horizon profile in test unit 500N-200E. ....	16
Plate 5: Plan view of the potential cultural feature documented on the floor of test unit 500N-190E. ....	17
Plate 6: Covering the potential cultural feature in test unit 500N-190E with geotextile before backfilling the unit. ....	17
Plate 7: The potential cultural feature in the northeast corner of test unit 505N-190E. ....	18
Plate 8: The potential cultural feature in the north half of test unit 510N-210E. ....	18
Plate 9: Clockwise from top left, horseshoe nail (Cat.# 2154); inkwell fragment (Cat.# 1641); fence staple (Cat.# 2082); hand wrought nail (Cat.# 1960); machine cut nail (Cat.# 1910); metal spoon bowl (Cat.# 1740); slate pencil (Cat.# 1800); chain link (Cat.# 1882). ....	19
Plate 10: Decorated refined white earthenwares. Clockwise from top left, chicken claw edgware (Cat.# 761); painted teas in late palette colours (Cat.# 840, 261); sponged (Cat.# 531) and stamped (Cat.# 393) body sherds; printed ceramics in underglaze blue, brown, black and purple (Cat.# 190, 201, 372, 830); body with Blue Willow pattern (Cat.# 1011). ....	19
Plate 11: Left to right, ironstone chamber pot rim (Cat.# 1602); ironstone bowl (Cat.# 420); ironstone teacup with blue sponge (Cat.# 106); semi porcelain teacup with decalcomania (Cat.# 454). ....	20
Plate 12: Coarse red earthenware kitchenwares. Left, cream pot (Cat.# 812). Right, milk crock (Cat.# 225). ....	20
Plate 13: Glass containers. Clockwise from top left, patent lip finish (Cat.# 1445); Perry Davis type finish (Cat.# 1457); patent lip finish (Cat.# 1446); extract finish (Cat.# 1391); embossed body fragments (Cat.# 1470, 1294); container base with pontil scar (Cat.# 1111); medicine vial base (Cat.# 1364). ....	21
Plate 14: Personal class artifacts. Clockwise from top left, TD pipe bowl (Cat.# 1680); fluted pipe bowl (Cat.# 1722); bone button (Cat.# 1643); Prosser button (Cat.# 1690); pipe stem with mark of Thomas White (Cat.# 1770). ....	21



## LIST OF TABLES

Table 1: Registered Sites within a 1 km Radius of the James Taggart site (BaHb-19) .....	3
Table 2: Artifact Storage Information for the James Taggart Site (BaHb-19) .....	5
Table 3: Artifact Totals by Functional Class and Provenience, James Taggart Site (BaHb-19) .....	5
Table 4: Chronologically Diagnostic Ware Types James Taggart Site (BaHb-19) .....	7
Table 5: Unique Vessels in the James Taggart Site (BaHb-19) Assemblage .....	8
Table 6: Material Curated by ASI from the James Taggart Site (BaHb-19) .....	10

## APPENDIX

### APPENDIX A: The James Taggart Site (BaHb-19) Artifact Inventory



## 1.0 PROJECT CONTEXT

### 1.1 Development Context

Archaeological Services Inc. (ASI) was contracted by Duivenvoorden Haulage Ltd. of Innisfil, Ontario to conduct a Stage 3 site-specific assessment of the James Taggart site (BaHb-19), located within a parcel of land that includes the east halves of Lots 13 and 14, Concession 4 Old Survey in the Township of Melancthon, Dufferin County (Figure 1). The work was conducted ahead of the expansion of the Melancthon Pit.

The excavation was conducted under the project direction of Ms. Eva MacDonald under archaeological licence P125 issued to Ms. MacDonald (MHSTCI PIF# P125-0313-2021) in accordance with the *Ontario Heritage Act* (RSO 1990). The *Aggregate Resources Act* triggered this archaeological assessment. Dr. Poorya Kashani (R1133) acted as the field director. All activities carried out during this assessment were completed in accordance with the terms of the Ministry of Heritage, Sport, Tourism and Culture Industries (MHSTCI 2011) *Standards and Guidelines for Consultant Archaeologists* (S&G). Ms. Tricia Cook of Duivenvoorden Haulage Ltd. granted ASI permission to enter the property and carry out the necessary activities for the completion of the Stage 3 assessment on January 19, 2021.

This report summarizes the study background, field methods, contextual history, and concludes with an evaluation of the cultural heritage value or interest of the James Taggart site (BaHb-19). Appendix A contains the artifact catalogue of all the historical material recovered as a result of this assessment. Site sensitive information has been submitted in a separate report for this project (ASI 2021) and includes more detailed information about the location of the site, including its location within the Township of Melancthon.

### 1.2 Historical Context

In order to place the James Taggart archaeological site within the context of historical land use, research was conducted at the Archives of Ontario (AO). According to the Abstract Index to Deed Titles for Melancthon Township, the Crown patent for the east half of Lot 14, Concession 4 Old Survey was granted to James Taggart in 1867. The patent was for 100 acres (AO n.d. [a]). The designation “Old Survey” refers to the fact that the east section of the township, which includes the subject property, was surveyed first in 1820; the west section was the subject of the “New Survey” by David Gibson in 1853 (ASI 2018:2).

Other sources of information were consulted to confirm who settled on the property. The agricultural returns included with the 1851 Census of Melancthon Township did not include a listing for Lot 14, Concession 4 (AO 1851). This may not be surprising as the township was slow to be settled, given its distance from the older townships that bordered on Lake Ontario and Lake Erie. In 1851, Melancthon Township was said to be newly settled, with only 200 inhabitants and 319 acres under cultivation (Smith 1851:110).

Ten years later, a farm with the address of Lot 14, Concession 4 was listed with the agricultural returns for the 1861 census. Just under 20 acres of the farm had been cleared of timber and put into agricultural production, including 15.5 acres of crops such as wheat, peas, oats, potatoes, turnips, and hay, and three acres of pasture for the farm’s livestock, which included cattle, sheep, and pigs. The personal portion of the census listed James Taggart as a 46-year-old Irish-born Presbyterian farmer who lived with his Irish wife Jane, aged 47 years, and three of their children, John 15, Margaret 11, and William 9, all of whom had been born in Ontario. The family lived in a one and a half storey log dwelling. If it is assumed that



between two and four acres of land can be put into agricultural production each year on a new farm, the Taggart family settled Lot 14 in the early 1850s.

Jane and James Taggart had moved with their family to Melancthon from Toronto Township in Peel County, where at least one of their children had been born. The record of son John Taggart's marriage to Elizabeth Outwaite in December of 1880 listed the groom's place of birth as Toronto Township (AO n.d. [b]). Indeed, a search for James Taggart's name in commercial directories for Toronto Township turned up listings on Lot 15, Concession 2 NDS, Toronto Township, for James Taggart in 1846 and 1850 (Brown 1846:84; Armstrong 1850:93). It is assumed that the Taggarts emigrated from Ireland shortly before the birth in Canada of their daughter Mary Jane circa 1844; while she was not listed in the household of Jane and James Taggart in the 1861 census, at the time of her marriage in April of 1866, Mary Jane was a resident of Melancthon Township (AO n.d. [b]).

The 100-acre Taggart farm continued to be listed in the 1871 Census of Melancthon Township. Seventy acres had been improved, an increase of 51.5 acres over what was reported under cultivation in the 1861 census. The farm's crops consisted of wheat, barley, oats, peas, Indian corn, potatoes, turnips, mangel wurtzel, hay, hops, apples, and maple sugar, while the livestock included cows, horses, sheep, and pigs. The family owned one house. The personal portion of the census listed youngest son William, now 18 years old, as a farmer along with his 56-year-old father James. The profession of older son John Taggart, now 24 years old, was stone mason, while no profession was listed for Margaret aged 20 years old (AO 1871).

In April of 1878, William Taggart married Charlotte Hunter aged 19 years old (AO n.d. [b]). The newlyweds established their own household as evinced by the entries in the 1881 Census of Melancthon Township. James and Jane Taggart are listed with a nine-year-old servant, Augustus Bates, as one household, and William and Charlotte Taggart are listed with their two-year-old daughter Mary in another household (AO 1881). Two years later in 1883, James Taggart sold the east half of Lot 14 to William Taggart (AO n.d. [a]). James Taggart died on December 6, 1893 of "old age" (AO n.d. [c]).

Two families were enumerated for Lot 14 in the 1901 census, including that of William Taggart, who now owned the east half of Lot 14. Taggart was listed as a 46-year-old Ontario-born farmer of Irish origin who lived with his Australian-born wife Charlotte and their nine children. The oldest daughter Irene Mary was a 21-year-old dressmaker, while the youngest member of the family was eight-month-old baby Vera. The family owned 100 acres and a nine-room house (AO 1901).

In summary, the east half of Lot 14 was settled by Irish immigrants, the Taggart family, prior to the Crown patent date of 1867, and was still occupied by family members in the early twentieth century. The material culture of the archaeological site is characteristic of the mid-nineteenth century, therefore, it probably represents the log cabin constructed on the property by James Taggart circa 1852. The nine-room house occupied in the 1901 census by the second generation, the family of William Taggart, was a later addition to a different part of the property.

### 1.3 Archaeological Context

In Ontario, information concerning archaeological sites is stored in the Ontario Archaeological Sites Database (OASD) that is maintained by the MHSTCI. This database contains archaeological sites registered within the Borden system. The Borden system was first proposed by Dr. Charles E. Borden and is based on a block of latitude and longitude. Each Borden block measures 13 km east-west by 18.5 km north-south. Each Borden block is referenced by a four-letter designator, and sites within a block are





numbered sequentially as they are found. The James Taggart site is located within the BaHb Borden block.

Five archaeological sites have been registered within one kilometre of the James Taggart site (BaHb-19). This includes one multi-component site, and four Euro-Canadian sites like the James Taggart site that relate to the colonial settlement of Melancthon Township in the nineteenth century.

**Table 1: Registered Sites within a 1 km Radius of the James Taggart site (BaHb-19)**

Borden No.	Name	Temporal/ Cultural Affiliation	Site Type	Researcher
BaHb-9		Pre-Contact Indigenous; Euro Canadian	Findspot; Homestead	Golder 2008
BaHb-12		Euro Canadian	Homestead	Golder 2008
BaHb-13		Euro Canadian	Homestead	Golder 2008
BaHb-17	Madill	Euro Canadian	Homestead	ASI 2017
BaHb-18	James Hamilton	Euro Canadian	Homestead	ASI 2017

The James Taggart site (BaHb-19) is located on relatively level terrain that slopes downward on the northwest margin of the site. It was discovered as a result of pedestrian survey of a cultivated agricultural field and was estimated to measure 72 m north-south by 50 m east-west; a representative sample of 137 historical artifacts was collected (ASI 2018:12). The types of artifacts in the kitchen/food-related, personal, and architectural classes indicated that the material was characteristic of middens that form on mid-nineteenth century farmsteads. As such, it was identified as an archaeological resource of Cultural Heritage Value or Interest (CHVI) requiring Stage 3 archaeological assessment (ASI 2018:16).

In the interim, the subject property containing the James Taggart site (BaHb-19) remained in active agricultural production. The Stage 3 assessment of the James Taggart site (BaHb-19) was initiated with a controlled surface pickup (CSP) on August 16, 2021 under the project direction of Ms. Eva MacDonald (MHSTCI PIF# P125-0303-2021) and field direction of Dr. Poorya Kashani (R1133). The hand excavation of one-metre-square test units was conducted between August 18 and August 26, 2021.

## 2.0 FIELD METHODS

All fieldwork was carried out in accordance with the 2011 *Standards and Guidelines for Consultant Archaeologists* (MHSTCI 2011). During all periods of the assessment, weather and lighting conditions permitted good visibility and were in accordance with Section 3.2 (archaeological site assessment) Standard 2 (MHSTCI 2011:47). Photographs of the field conditions were taken and the location and direction of selected photographs is indicated on Figure 2.

The agricultural field containing the James Taggart site (BaHb-19) had been ploughed in preparation for the Stage 3 assessment in the summer of 2021. The surface of the field had weathered through multiple rainfalls and visibility was rated as optimum with a minimum of 80 percent surface visibility (Plates 1, 2). The site was relocated using mapping and GPS coordinates generated during the Stage 2 assessment. The agricultural field was walked at a one-metre transect interval and the artifacts were flagged and the locations recorded relative to a fixed site datum (500N-200E) using a total station. All of the artifacts were collected.

A recording grid tied to the fixed site datum was then laid in over the surface of the site for horizontal control and test units were placed systematically at ten metre intervals. All soil was screened through six mm wire mesh to maximize the recovery of artifacts (Plate 3). Each one-metre square test unit was hand-





excavated at least five cm into the sterile dark yellowish-brown sand B-horizon (Plate 4), or until the surface of a cultural feature was encountered (Plate 5). All units contained a very dark greyish-brown sandy loam ploughzone. The subsoil was trowelled and all profiles examined for undisturbed cultural deposits. Geotextile was placed on top of potential cultural features (Plate 6) and all the test units were backfilled at the conclusion of the assessment.

A total of 43 units was excavated to determine the limits of the James Taggart site (BaHb-19), the boundary of which was defined by test units on the periphery of the surface scatter containing six artifacts or less (Figure 2). Test unit depths to the sterile B-horizon ranged between 19 cm below the surface in 490N-210E and 47 cm at 520N-220E. After the limits of the site had been defined, an additional 18 units (40 percent of the site area total) were excavated to provide an increased sample in areas of interest (Figure 2). In particular, units were placed to determine the frequencies in between units with widely disparate yields, for example, where yields dropped from 140 to 11 artifacts along the 510N line, or from 93 to 30 artifacts along the 190E line (Figure 2).

### **3.0 RECORD OF FINDS**

#### **3.1 Artifact Distribution**

The historical artifact distribution is well-defined across an area 60 m east-west and 60 m north-south. Test unit yields in the ploughzone ranged from zero artifacts in unit 500N-170E to 138 artifacts in 510N-210E (Figure 2).

#### **3.2 Potential Cultural Features**

Potential cultural features were documented in three of the one-metre square test units. Based on the presence of coarsely mixed red brick fragments, charcoal and mortar in a sandy loam matrix (10YR-3/2), the potential feature identified in unit 500N-190E may be a root cellar (Plate 5). This potential feature filled the entirety of the unit floor.

In the northeast corner of unit 505N-190E, the potential feature presented as a square cut in the B-horizon that had been filled with varying amounts of very dark greyish brown (10YR-3/2) silty loam coarsely mixed with red brick fragments, charcoal and mortar (Plate 7).

In unit 510-210, the potential feature presented as a cut in the B-horizon that filled the north half of the unit floor with very dark greyish-brown sandy loam (10Y-3/2) coarsely mixed with small red brick fragments and stones (Plate 8).

#### **3.3 Artifact Inventory**

In total, 1,748 Euro-Canadian artifacts (Appendix A) were recovered during the Stage 3 archaeological assessment of the James Taggart site (BaHb-19). The artifacts related to this archaeological assessment will be curated by Archaeological Services Inc. until such a time that arrangements for their ultimate transfer to Her Majesty the Queen in right of Ontario, or other public institution, can be made to the satisfaction of the project owner(s), the Ontario Ministry of Heritage, Sport, Tourism and Culture Industries, and any other legitimate interest groups. The nature in which the material is stored is summarized in Table 2 below.



**Table 2: Artifact Storage Information for the James Taggart Site (BaHb-19)**

ASI Project Code: 18MT-063			2 Banker's Box
Operation	Catalogue Numbers	Material	Box Number
Test Unit Excavation	100-1102	Ceramic	1
Test Unit Excavation	1110-1590	Glass	1, 2
Test Unit Excavation	1600-1850	Miscellaneous	2
Test Unit Excavation	1860-2221	Metal	2
Test Unit Excavation	2230-2450	Faunal	2
The material from the CSP and one-metre-square test units are contained in medium plastic zip lock bags; the bags are arranged sequentially by material and provenience in two banker's boxes. Collection may be transferred to one of ASI's secure, off-site storage facilities if deemed necessary.			

A modified "Classification System for Historical Collections" (Canadian Parks Service 1992) was used to organize the historical artifact data. The relative frequencies of artifacts by functional class are presented in Table 3.

**Table 3: Artifact Totals by Functional Class and Provenience, James Taggart Site (BaHb-19)**

Artifact Class	Ploughzone	Class Totals	Class Total as Percent of Site
<i>Architectural</i>		326	18.6%
Hinge	1		
Nail, hand wrought	12		
Nail, machine-cut	168		
Nail, wire	4		
Nail, indeterminate	1		
Window glass	140		
<i>Furnishing</i>		10	0.6%
Figurine	1		
Oil lamp chimney	9		
<i>Kitchen/Food-related</i>		1,134	64.8%
Container, liquor	12		
Container, food	1		
Tin can	6		
Cutlery	2		
Table glass	2		
Kitchenware	192		
Tableware	743		
Teaware	176		
<i>Organic</i>		52	3.0%
Faunal, aquatic shell	6		
Faunal, mammal	46		
<i>Personal</i>		57	3.3%
Chamber pot	2		
Clothing	9		
Container, medicine	7		
Smoking pipe	38		
Coin	1		
<i>Tools/Equipment</i>		33	1.9%
Agricultural	2		
Animal husbandry	4		
General tools	4		



**Table 3: Artifact Totals by Functional Class and Provenience, James Taggart Site (BaHb-19)**

Artifact Class	Ploughzone	Class Totals	Class Total as Percent of Site
Hardware	17		
Writing	6		
<i>Indeterminate</i>		136	7.8%
Unidentifiable glass container	102		
Other including metal scrap	34		
<i>Artifact Totals</i>		1,748	100.0%

## Architectural Class

Artifacts from the architectural class (Plate 9) comprise 18.6 percent (n=326) of the artifact assemblage, including 12 hand wrought nails that pre-date 1830 in Ontario; 168 machine-cut nails that date between the 1830 and 1900; and four wire nails that post-date 1900 (Appendix A-1; Kenyon 1982). Just under half of the architectural class items consist of window glass (n=140). One door hinge and one nail of indeterminate manufacture make up the balance of the class (Table 3).

The presence of these items denotes a wood-framed structure with windows that was occupied primarily during the mid-nineteenth century given the frequency of machine cut nails. The small quantity of hand wrought nails in the assemblage suggests an attempt may have been made to settle the property in the 1830s, but this venture was abandoned. Alternatively, their use represents a time lag in the shift to using machine cut nails in Melancthon Township if the first family to settle Lot 14 was that of James Taggart in the early 1850s. Small quantities of hand wrought nails are not uncommon on archaeological sites located in townships north of Lake Ontario where Crown land patents were issued in the 1850s and 1860s, such as the Whan site (BbGv-54) in Innisfil Township (ASI 2016) in Simcoe County.

## Furnishings Class

The furnishings class consists of one Staffordshire ceramic figurine fragment and nine colourless glass oil lamp chimney fragments (Appendix A-1). The oil lamp fragment represents the common type of lighting device used in homes during the late nineteenth and early twentieth century prior to rural electrification. Candles would have been used in the Taggart household until the early 1860s, when the dropping price of kerosene made glass oil lamps more affordable (Woodhead et al. 1984:48).

## Kitchen and Food-related Class

The Stage 3 assemblage contains 1,134 kitchen and food-related artifacts comprising 64.8 percent of the artifact assemblage (Table 3). These artifacts pertain to the storage, preparation, distribution, and consumption of food and beverages. Ceramics (n=1,111) dominate this artifact class (Appendix A-2).

### *Ceramics*

The ceramic assemblage can be discussed in many ways, including by ware type (Table 4), decorative technique, and unique vessels (Table 5). Discerning the ware types within an assemblage is useful as a relative dating technique (Jouppien 1980) because of the historical progression of types in industrial-era ceramic production. This applies only to refined ceramic table and tea wares as the stoneware (n=2) and



coarse red or buff earthenware (n=152) used for food storage and food preparation in the kitchen were ubiquitous throughout the nineteenth century.

**Table 4: Chronologically Diagnostic Ware Types James Taggart Site (BaHb-19)**

Ware Type	Date Range in Ontario	Number of Sherds	Percent of Total Diagnostic Ware Types
Jackfield	1796-1830	5	0.6
Pearlware	1780-1835	1	0.1
Refined white earthenware (RWE)	1820-present	593	71.6
Ironstone	1840-1890	189	22.8
Semi Porcelain	1890-present	2	3.0
Yellow ware	1830-1920	38	4.6
<b>Total</b>		<b>828</b>	<b>100.00%</b>

Only one sherd of pearlware was recovered from the James Taggart site, which is consistent with an occupation that started after 1835. Pearlware was invented in the mid-1770s to keep the middle class refined earthenwares competitive with the porcelain market. Potters tried to imitate Chinese porcelain with this new ware type by adding a small amount of cobalt oxide to the glaze thus creating a slightly bluish tint (Miller and Hunter 2001). Pearlware ceramics were suited to painted cobalt blue decorations as well as shell edge and blue-printed motifs and continued to be sold in Ontario until the mid-1830s (Kenyon 1995:5). Another ware common in the early nineteenth century was refined red earthenware used in the manufacture of lusterware and Jackfield teapots and jugs; in Ontario, the terminal date for Jackfield is 1830 (Jouppien 1980).

Josiah Spode is credited with perfecting the underglaze printing technique circa 1784 that allowed potters to produce decorated tea and tablewares quickly and attractively, first in blue, and after 1824 in chrome green, red, black, brown, and many other colours (Collard 1984:114; Copeland 1994:20). These latter colours looked better on a white background, hence potters gradually dropped the blue-tinted and cream-coloured glazes and began to develop refined white-bodied earthenwares (RWE) decorated with painted, edged, and printed motifs (Plate 10). The new techniques of sponging and stamping were developed for decorating ceramics in the 1840s (Kenyon 1995:6).

In the 1840s, ironstone started being produced in England as a heavier, cheaper alternative to the influx of hard paste porcelains from France into the markets of Canada and the United States (Majewski and O'Brien 1987:120). The first generation of vessels were undecorated or had simple moulded ribs and panels in the body (Sussman 1985:7). Flow blue-printed ironstone also began to be imported to North America in 1845 (Collard 1984:17). Due to its very hard durable body, ironstone became ubiquitous in frontier households and started appearing in Ontario merchants' records in 1847 (Kenyon 1995:10). Indeed, the popular moulded "Ceres" wheat pattern and its variants, which was developed by English potters in 1859 specifically for export to North America, was meant to appeal to homesteaders in North America (Sussman 1985:7).

Concurrent with the development of ironstone was the development of hard-bodied ceramics with dyed bodies in colours such as light brown, blue, and yellow, the latter known as yellow ware. Yellow ware was more common in Ontario merchants' records and was imported as bowls, baking dishes, jugs, and chamber pots (Kenyon 1995). By 1900, ironstone was one of three ware types commonly used for tablewares along with semi-porcelain and true European and Japanese porcelains (Plate 11; Kenyon 1995:13). The first true porcelain developed in England was in Josiah Spode's factory in 1799. The key ingredient was the addition of calcined bone ash that made the porcelain whiter, stronger, and less susceptible to distortion and breakage in the kiln, giving rise to the name bone china (Copeland 1994:25).



Less chronologically diagnostic ceramics consist of coarse red and buff earthenwares (Plate 12), which are heavy, thickly potted ceramic types that receive their names from the colour of the clay after firing – red and buff respectively. As they are porous, they had to be glazed to make them food safe. The Ontario manufacture of coarse earthenwares from local clay began in the 1790s and continued until the First World War with little change in the technology (Newlands 1979:30, 110). Initially, the heavy and bulky nature of the redware vessels worked in favour of the local potters, who did not have to compete with imported English wares that were difficult to transport to Canada. The decline of the domestic pottery industry coincided with the development of new technologies to process and preserve foods such as the glass canning jar in the late nineteenth century (Newlands 1979:27-28).

The most frequent ware type in the James Taggart site assemblage is RWE (n=593), comprising 71.6 percent of the identified refined ceramics in the assemblage. Ironstone makes up 22.8 percent (n=189) of the identified refined ceramics and semi porcelain makes up 0.3 percent (n=2) (Table 4). Seventy percent of the identified non-moulded motifs on decorated RWE and ironstone ceramics are painted, edged, and printed wares characteristic of the first half of the nineteenth century (Appendix A-2). Thirty percent of the decorated refined ceramics are sponged and stamped wares first available in 1840. The RWE and ironstone ceramics would have been used by the first generation of the Taggart family.

Turning to a discussion of vessel use, 743 sherds are representative of tableware, 176 sherds of teaware, and 192 sherds of kitchenware (Table 3). The ceramic assemblage has also been sorted into a minimum number of vessels based on diagnostic rims, ware type, and distinctive decorative attributes. In total, 26 unique vessels have been identified (Table 5).

**Table 5: Unique Vessels in the James Taggart Site (BaHb-19) Assemblage**

Cat. #	Vessel Type	Provenience	Ware Type	Decorative Motif
260	Saucer	495N-185E	RWE	Sponged – Blue
360	Saucer	500N-190E	RWE	Painted, late palette colours
597	Saucer	505N-210E	RWE	Stamped – Blue
680	Saucer	510N-200E	RWE	Sponged – Blue
840	Saucer	515N-205E	RWE	Painted, late palette colours
540	Saucer	505N-200E	RWE	Stamped – Blue
921	Saucer	515N-215E	RWE	Painted, late palette colours
140	Teacup	490N-180E	RWE	Stamped – Red
362	Teacup	500N-190E	RWE	Sponged – Blue
590	Teacup	505N-210E	RWE	Painted, late palette colours
591	Teacup	505N-210E	RWE	Sponged – Blue
683	Teacup	510N-200E	RWE	Painted, late palette colours
881	Teacup	515N-210E	RWE	Sponged – Blue
1030	Teacup	530N-190E	RWE	Sponged – Blue
160	Muffin Plate	480N-170E	RWE	Printed – Blue Willow Pattern
761	Twiffler Plate	510N-210E	RWE	Blue Edgware – Straight
595	Table Plate	505N-210E	RWE	Blue Edgware – Straight
822	Table Plate	510N-220E	RWE	Printed – Blue
542	Saucer	505N-200E	Ironstone	Undecorated
106	Teacup	surface	Ironstone	Sponged – Blue
108	Teacup	surface	Ironstone	Undecorated
143	Teacup	490N-180E	Ironstone	Moulded – Ribbed or panelled
598	Teacup	505N-210E	Ironstone	Undecorated
599	Teacup	505N-210E	Ironstone	Moulded - General
224	Milk Crock	490N-190E	Coarse Red Earthenware	Glazed – Brown
812	Cream Pot	510N-215E	Coarse Red Earthenware	Glazed – Brown



### *Non-ceramic kitchen and food-related artifacts*

The balance of the kitchen and food-related artifacts consist of two spoons (Plate 9; Cat.# 2220, 1740); one extract container finish (Plate 13); two items of table glass; six metal can fragments; and 12 olive green liquor container fragments (Appendix A-1).

### **Organic Class**

The organic class comprises 3.0 percent of the assemblage and consists of six fragments of aquatic shell and 46 mammal bones (Table 3; Appendix A-1). These elements represent the remains of meals prepared in the Taggart family household.

### **Personal Class**

The personal class makes up 3.3 percent of the assemblage (Table 3) and includes one heavily worn modern Canadian penny (Cat.# 1691). Smoking pipe fragments (n=38) comprise the bulk of the personal gear (Appendix A-1; Plate 14). At least three manufacturer's marks are represented: William Henderson of Montreal (Cat.# 1831) dated to between 1847-1876; Duncan McDougall of Glasgow (Cat.# 1782) dated to between 1846-1947; and Thomas White & Co. of Edinburgh (Cat.# 1770) dated to between 1823-1876 (Kenyon 1984; Walker 1970). The bowls that are decorated include the popular plain "TD" variant (Cat.# 1601) and variants (Cat.# 1722) of the four-band fluted pipe (Kenyon 1980b, 1982, 1984).

One cylindrical container base (Cat.# 1364) is characteristic of nineteenth-century medicine vials (Plate 14); another six commercial medicine containers are recognized by their patent lip or Perry Davis type finishes or the size and shape of the body (Plate 14). The Taggart family's toilet and hygiene practices are evident from two ceramic chamber pot fragments (Plate 11; Appendix A-1).

Clothing (n=9) includes one shoe grommet; two leather shoe fragments; and six buttons (Appendix A-1; Plate 14). The buttons are made of bone (n=2) and ceramic (n=4). Ceramic "Prosser" buttons were invented by Englishman Richard Prosser in 1840 (Sprague 2002). They came plain or decorated with moulded and painted motifs, and were used for children's clothing, men's shirts, and women's dresses (Ferris 1984:7).

### **Tools and Equipment Class**

The tools and equipment class (n=33) can be further characterized by activity subclasses (Table 3). The agricultural subclass includes two fence staples (Plate 9). It became common in the late nineteenth century to use wire fencing to demarcate farm field systems after the technology was introduced from the American midwest in the 1860s (Kenyon 1980a). The animal husbandry subclass includes one horse shoe fragment; two horse shoe nails (Plate 9); and one harness buckle (Appendix A-1).

General tools include one metal bar; one file; one hook; and one other tool (Appendix A-1). The hardware subclass includes one bolt; one chain link (Plate 9); four screws; nine fragments of ferrous metal strapping; and two miscellaneous wire fragments (Appendix A-1). The writing subclass includes one slate pencil (Plate 9); two slate tablet fragments; and three stoneware ink container fragments (Plate 9) (Appendix A-1).





## Indeterminate Class

Artifacts whose function cannot be determined are placed in the indeterminate class. At the James Taggart site these include 102 glass container fragments and 34 other corroded or fragmented items of metal or ceramic (Table 3; Appendix A-1). Only four of the glass fragments are solarised. Solarised glass is a product of the glass maker's formula, which in the last quarter of the nineteenth century included a manganese compound that slowly turned colour from colourless to amethyst upon exposure to sunlight (Jones and Sullivan 1985:13).

## 3.4 Inventory of the Documentary Record

The material relating to the Stage 3 archaeological assessments is curated by ASI as part of the 2021 licensing agreement made with the Ministry of Heritage, Sport, Tourism and Culture Industries. The details of this curated material are listed in Table 6 below.

**Table 6: Material Curated by ASI from the James Taggart Site (BaHb-19)**

Document/Material	Location	Comments
-Written field notes, annotated field maps, GPS logs, one-metre excavation forms	-Archaeological Services Inc., 528 Bathurst Street, Toronto, ON M5S 2P9	
-Field Photography (Digital)	-Archaeological Services Inc., 528 Bathurst Street, Toronto, ON M5S 2P9	-Stored on ASI network servers
-Research/Analysis/Reporting Materials (Various Formats)	-Archaeological Services Inc., 528 Bathurst Street, Toronto, ON M5S 2P9	-Hard copy and/or digital files stored on ASI network servers
-Artifacts	-Archaeological Services Inc., 528 Bathurst Street, Toronto, ON M5S 2P9	-1,748 Euro-Canadian artifacts stored in plastic bags within 2 banker's boxes -All material stored in standard banker's boxes by material class and provenience. Collection may be transferred to one of ASI's secure, off-site storage facilities if deemed necessary.

## 4.0 ANALYSIS AND CONCLUSIONS

The Stage 3 site-specific archaeological assessment of the James Taggart site (BaHb-19) was carried out to define the extent and nature of the archaeological site prior to the expansion of the Melancthon Pit in the County of Dufferin. The assessment involved a CSP and the hand excavation of 61 one-metre-square test units within the 10 m grid established for the site.

A total of 1,748 Euro-Canadian artifacts was recovered across an area approximately 60 m north-south and 60 metre east-west. The low frequency of twentieth-century material culture in the assemblage indicates that there was minimal overlap with respect to the homelots occupied by the two generations of the Taggart family. The majority of the diagnostic refined ceramics are refined white earthenware decorated in styles indicative of the 1835-1870 time period in southern Ontario, including edged tablewares, and printed, painted, and sponged teawares. The majority of the identifiable nails are machine cut that date to between 1830 and 1900 in Ontario. In combination with the recovered shards of window





glass, these architectural items indicate that a structure was built at this location, identified as a log cabin occupied by the Taggart family from the early 1850s to the early 1870s.

Quantities of personal items such as buttons, smoking pipes, chamber pot fragments, and medicine containers further identify the deposit as a midden. The relative frequencies of the artifact classes exhibit a distribution as would be expected on a domestic site in southern Ontario where artifacts have been discarded through the course of daily activities performed on the homelot (MacDonald 1997:Table 4). Therefore, a significant midden deposit has been identified on the James Taggart site (BaHb-19) and it meets the MHSTCI criteria of a site type with cultural heritage value or significance as per Section 3.4.2 Standard 1a (MHSTCI 2011:59).

The James Taggart site (BaHb-19) is located within the Melancthon Pit Expansion and avoidance and protection of the site is not a viable option (ASI 2021:Figure 2). Therefore, the Stage 4 mitigative excavation of the James Taggart site (BaHb-19) is required prior to the operationalization of the pit expansion.

The density of artifacts in the core of the James Taggart site (BaHb-19) is comparable to other sites in townships north of Lake Ontario, such as the Whan site (BbGv-54) in Innisfil Township, where the unit-yield values recorded during Stage 3 assessment did not exceed 165 artifacts (ASI 2016:4). Indeed, the yields less than the high count of 138 artifacts in test unit 510N-210E drop off sharply within 10 m of the centre of the James Taggart site such that the area is characterized by a compact midden core with sparse yields on the periphery (Figure 2).

At the James Taggart site (BaHb-19), the midden, which is the core of the site, should be hand excavated as per Section 4.2.2 of the S&G; Standard 3c defines the core as the area around all high yielding Stage 3 test units (MHSTCI 2011:77). The extent of the midden at the James Taggart site is defined by artifact yields of 90 per unit or greater, which is a value specific to this site that was chosen in the professional judgement of the project manager to ensure that a sufficient sample of the midden is salvage excavated. In combination with the block excavation of two metres beyond the test units with potential cultural features (units 500N-190E, 505N-190E, 510N-210E), this translates into the total block excavation of 100 square metres, representing the densest portion of the site. The balance of the ploughzone should be stripped using a machine equipped with a smooth bucket and examined for the presence of cultural features in the B-horizon.

## 5.0 RECOMMENDATIONS

Given the preceding information, it is concluded that:

1. The James Taggart site (BaHb-19) meets the MHSTCI criteria of a site type with CHVI. Therefore, Stage 4 mitigation of impacts is required. The recommended Stage 4 protocol is the hand-excavation of additional one-metre square units around the high-yielding deposits, starting with Stage 3 units 500N-190E, 510N-205E, 510N-210E, and 515N-210E until yields drop to 90 artifacts per square, in order to salvage excavate the midden. Any cultural features exposed must also be buffered by two metres during the hand excavation. Following the block excavation, mitigation would continue with the removal of the plough zone by mechanical means (Gradall or backhoe equipped with a smooth bucket) to expose potential features within the B-horizon. The stripped area must be buffered by at least 10 metres of subsoil free of features. The exposed subsoil should then be cleaned by shovel (“shovel shine”) or trowel and the resulting subsoil surface examined for cultural features. Afterward, full hand-excavation and documentation of all features should follow.



**NOTWITHSTANDING** the results and recommendations presented in this study, Archaeological Services Inc. notes that no archaeological assessment, no matter how thorough or carefully completed, can necessarily predict, account for, or identify every form of isolated or deeply buried archaeological deposit. In the event that archaeological remains are found during subsequent construction activities, the consultant archaeologist, approval authority, and the Cultural Programs Unit of the Ministry of Heritage, Sport, Tourism and Culture Industries should be immediately notified.

The above recommendation is subject to Ministry approval and it is an offence to alter any archaeological site without Ministry of Heritage, Sport, Tourism and Culture Industries concurrence. No grading or other activities that may result in the destruction or disturbance of any archaeological sites are permitted until notice of Ministry of Heritage, Sport, Tourism and Culture Industries approval has been received.

## 6.0 ADVICE ON COMPLIANCE WITH LEGISLATION

In addition, the following advice on compliance is provided:

- This report is submitted to the Minister of Heritage, Sport, Tourism and Culture Industries as a condition of licensing in accordance with Part VI of the *Ontario Heritage Act*, RSO 1990, c 0.18. The report is reviewed to ensure that it complies with the standards and guidelines that are issued by the Minister, and that the archaeological field work and report recommendations ensure the conservation, preservation and protection of the cultural heritage of Ontario. When all matters relating to archaeological sites within the project area of a development proposal have been addressed to the satisfaction of the Ministry of Heritage, Sport, Tourism and Culture Industries, a letter will be issued by the ministry stating that there are no further concerns with regard to alterations to archaeological sites by the proposed development.
- It is an offence under Sections 48 and 69 of the *Ontario Heritage Act* for any party other than a licensed archaeologist to make any alteration to a known archaeological site or to remove any artifact or other physical evidence of past human use or activity from the site, until such time as a licensed archaeologist has completed archaeological field work on the site, submitted a report to the Minister stating that the site has no further cultural heritage value or interest, and the report has been filed in the Ontario Public Register of Archaeology Reports referred to in Section 65.1 of the *Ontario Heritage Act*.
- Should previously undocumented archaeological resources be discovered, they may be a new archaeological site and therefore subject to Section 48 (1) of the *Ontario Heritage Act*. The proponent or person discovering the archaeological resources must cease alteration of the site immediately and engage a licensed consultant archaeologist to carry out archaeological fieldwork, in compliance with sec. 48 (1) of the *Ontario Heritage Act*.
- The *Funeral, Burial and Cremation Services Act*, 2002, S.O. 2002, c.33, requires that any person discovering or having knowledge of a burial site shall immediately notify the police or coroner. It is recommended that the Registrar of Cemeteries at the Ministry of Government and Consumer Services is also immediately notified.
- Archaeological sites recommended for further archaeological field work or protection remain subject to Section 48(1) of the *Ontario Heritage Act* and may not be altered, nor may artifacts be removed from them, except by a person holding an archaeological license.



## 7.0 BIBLIOGRAPHY AND SOURCES

### ASI (Archaeological Services Inc.)

- 2016 Stage 3 Archaeological Assessment of the Whan Site (BbGv-54), Revised Draft Plan of Subdivision I-T-1302, Part of Lot 23, Concession 5, and Lots 22-25, Concession 6, Geographic Township of Innisfil, Now in the Town of Innisfil, Simcoe County, Ontario. Original report on file with the Ontario Ministry of Heritage, Sport, Tourism and Culture Industries, Toronto.
- 2018 Stage 1 and 2 Archaeological Assessment of the Melancthon Pit Expansion, Part of the East Half of Lot 13 and the East Half of Lot 14, Concession 4 Old Survey, Township of Melancthon, Dufferin County, Ontario. Original report on file with the Ontario Ministry of Heritage, Sport, Tourism and Culture Industries, Toronto.
- 2021 Stage 3 Site-Specific Assessment of the James Taggart Site (BaHb-19), Melancthon Pit Expansion, Part of Lots 13 and 14, Concession 4 Old Survey, Township of Melancthon, Dufferin County, Ontario. Supplementary documentation on file with the Ontario Ministry of Heritage, Sport, Tourism and Culture Industries, Toronto.

### (AO) Archives of Ontario

- n.d.[a] Dufferin County LRO Records, Abstract Index to Deed Titles, Melancthon Township. Reel GSU 171707.
- n.d.[b] County Marriage Registers in Ontario, 1826-1938. Ms. 248.
- n.d.[c] Ontario Deaths and Deaths Overseas, 1869-1948. Ms 938.
- 1851 Microfilm of Census Rolls, Melancthon Township. Reel C-11723.
- 1861 Microfilm of Census Rolls, Melancthon Township. Reels C-1027, 1028.
- 1871 Microfilm of Census Rolls, Melancthon Township. Reel C-9951.
- 1881 Microfilm of Census Rolls, Melancthon Township. Reel C-13261.
- 1901 Microfilm of Census Rolls, Melancthon Township. Reel T-6468.

### Armstrong, J., editor

- 1850 *Rowell's City of Toronto and County of York Directory for 1850-51*. Henry Rowell, Toronto.

### Brown, G.

- 1846 *Brown's Toronto City and Home District Directory 1846-47*. George Brown, Toronto.

### Canadian Parks Service

- 1992 *Classification System for Historical Collections*. National Historic Sites, Parks Service, Environment Canada, Ottawa.

### Collard, E.

- 1984 *Nineteenth-Century Pottery and Porcelain in Canada*. Second Edition. McGill-Queen's University Press, Montreal and Kingston.

### Copeland, R.

- 1994 Spode. *Shire Album* 309. Shire Publications Ltd., Buckinghamshire, UK.

### Ferris, N.

- 1986 Buttons I Have Known. In *Studies in Southwestern Ontario Archaeology*, ed. by W. Fox, pp. 98-106. Occasional Publication of the London Chapter, Ontario Archaeological Society, London, Ontario.

### Jones, O., and C. Sullivan

- 1985 *The Parks Canada Glass Glossary*. National Historic Sites, Parks Service, Environment Canada, Ottawa.

### Jouppien, J.

- 1980 The Application of South's Mean Ceramic Formula to Ontario Historic Sites. *Arch Notes* 1980(3):24-28.



- Kenyon, I.  
1982 *Settlements – The ACO Guide to 19th C. Sites*. Ontario Ministry of Citizenship and Culture, Archaeology and Heritage Planning Branch, London.  
1995 A History of Ceramic Tableware in Ontario: 1780-1910. Paper presented at Table Talks Lecture Series, Montgomery's Inn, Toronto.
- Kenyon, T.  
1980a Nineteenth Century Notes: Wire Fencing. *KEWA (Newsletter of London Chapter, Ontario Archaeological Society)* 80-5.  
1980b Nineteenth Century Notes: The 4-Band Fluted Pipe. *KEWA (Newsletter of London Chapter, Ontario Archaeological Society)* 80-9.  
1982 Nineteenth Century Notes: Plain TD Clay Tobacco Pipes, Part II. *KEWA (Newsletter of London Chapter, Ontario Archaeological Society)* 82-4.  
1984 Nineteenth Century Notes: Clay Tobacco Pipes with Marked Stems. *KEWA (Newsletter of London Chapter, Ontario Archaeological Society)*, 84-8.
- Majewski, T., and M. J. O'Brien  
1987 The Use and Misuse of Nineteenth-Century English and American Ceramics. In *Archaeological Analysis: Advances in Archaeological Method and Theory, Volume II*, edited by M. B. Schiffer, pp. 97–209. Academic Press, New York.
- MacDonald, E.  
1997 The Root of the Scatter: Nineteenth Century Artifact and Settlement Patterns in Rural Ontario. *Ontario Archaeology* 64:56-80.
- Miller, G., and R. Hunter Jr.  
2001 How Creamware Got the Blues: The Origins of China Glaze and Pearlware. In, *Ceramics in America, Volume 1*, edited by R. Hunter, pp. 135-161. The Chipstone Foundation, Madison, Wisconsin.
- MHSTCI (Ministry of Heritage, Sport, Tourism and Culture Industries)  
2011 *Standards and Guidelines for Consultant Archaeologists*. Programs and Services Branch, Archaeology Program Unit, Toronto.
- Newlands, D.  
1979 *Early Ontario Potters: Their Craft and Trade*. McGraw-Hill Ryerson, Toronto.
- Smith W. H.  
1851 *Canada Past, Present and Future: Being a Historical, Geographical and Statistical Account of Canada West*. Volume II. Thomas Maclear, Toronto.
- Sprague, Roderick  
2002 China or Prosser Button Identification and Dating. *Historical Archaeology* 36(2):111-127.
- Sussman, Lynn  
1985 *The Wheat Pattern, An Illustrated Survey*. National Historic Sites, Parks Service, Environment Canada, Ottawa.
- Walker, I.  
1970 Nineteenth-century Clay Tobacco Pipes in Canada. *Ontario Archaeology* 16:19-35
- Woodhead, E.I., C. Sullivan, and G. Gusset  
1984 *Lighting Devices in the National Reference Collection, Parks Canada*. National Historic Parks and Sites Branch, Parks Canada, Environment Canada, Ottawa.





## 8.0 IMAGES



Plate 1: Surface conditions for optimum visibility during the CSP at the Taggart site (BaHb-19).



Plate 2: Looking west over the site during the CSP at the Taggart site (BaHb-19).





Plate 3: Screening the ploughzone during the excavation of test unit 490N-200E, looking west.



Plate 4: Typical ploughzone/ B-horizon profile in test unit 500N-200E.





Plate 5: Plan view of the potential cultural feature documented on the floor of test unit 500N-190E.



Plate 6: Covering the potential cultural feature in test unit 500N-190E with geotextile before backfilling the unit.





Plate 7: The potential cultural feature in the northeast corner of test unit 505N-190E.



Plate 8: The potential cultural feature in the north half of test unit 510N-210E.



Plate 9: Clockwise from top left, horseshoe nail (Cat.# 2154); inkwell fragment (Cat.# 1641); fence staple (Cat.# 2082); hand wrought nail (Cat.# 1960); machine cut nail (Cat.# 1910); metal spoon bowl (Cat.# 1740); slate pencil (Cat.# 1800); chain link (Cat.# 1882).



Plate 10: Decorated refined white earthenwares. Clockwise from top left, chicken claw edgware (Cat.# 761); painted teas in late palette colours (Cat.# 840, 261); sponged (Cat.# 531) and stamped (Cat.# 393) body sherds; printed ceramics in underglaze blue, brown, black and purple (Cat.# 190, 201, 372, 830); body with Blue Willow pattern (Cat.# 1011).





Plate 11: Left to right, ironstone chamber pot rim (Cat.# 1602); ironstone bowl (Cat.# 420); ironstone teacup with blue sponge (Cat.# 106); semi porcelain teacup with decalcomania (Cat.# 454).



Plate 12: Coarse red earthenware kitchenwares. Left, cream pot (Cat.# 812). Right, milk crock (Cat.# 225).



Plate 13: Glass containers. Clockwise from top left, patent lip finish (Cat.# 1445); Perry Davis type finish (Cat.# 1457); patent lip finish (Cat.# 1446); extract finish (Cat.# 1391); embossed body fragments (Cat.# 1470, 1294); container base with pontil scar (Cat.# 1111); medicine vial base (Cat.# 1364).



Plate 14: Personal class artifacts. Clockwise from top left, TD pipe bowl (Cat.# 1680); fluted pipe bowl (Cat.# 1722); bone button (Cat.# 1643); Prosser button (Cat.# 1690); pipe stem with mark of Thomas White (Cat.# 1770).



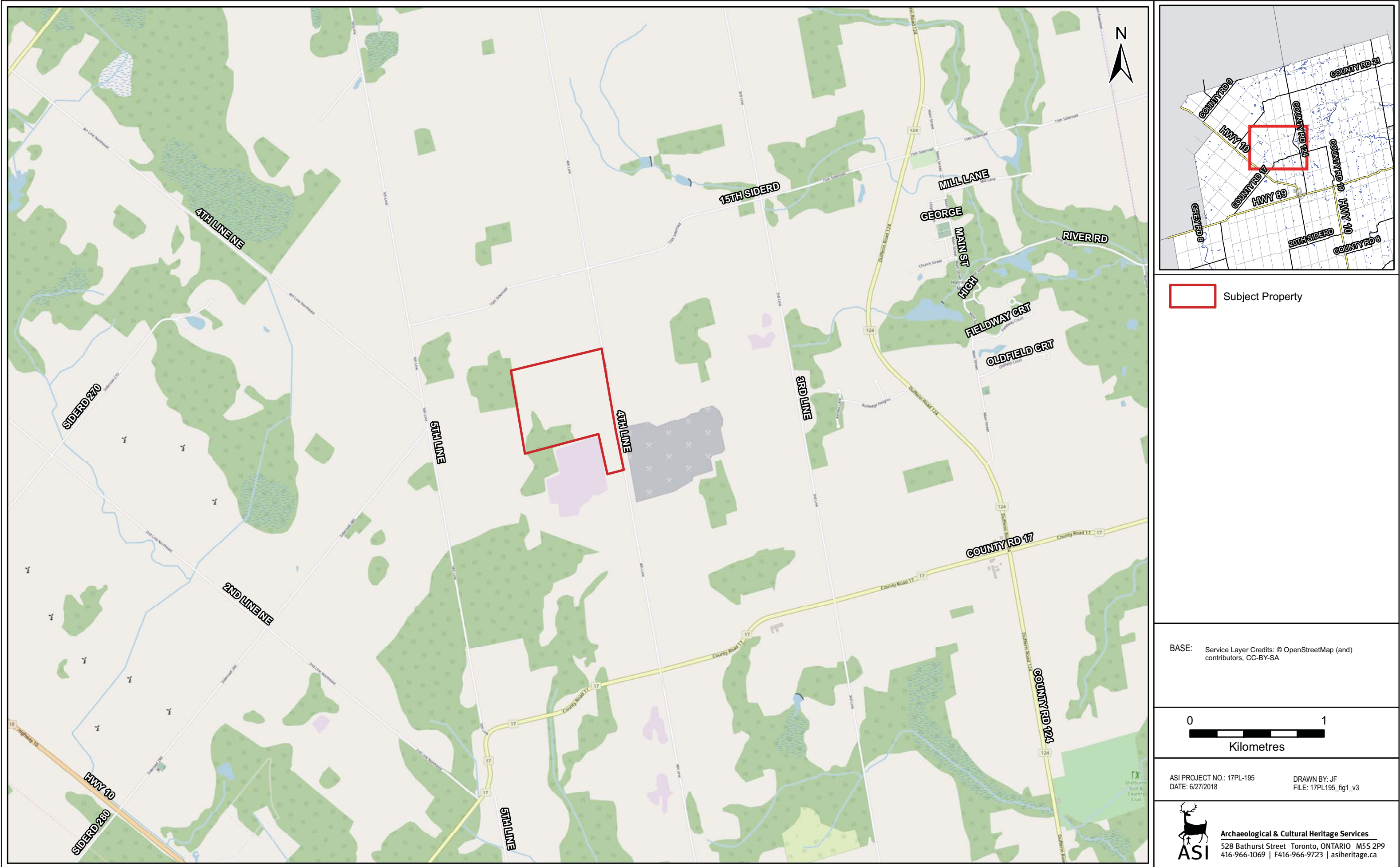
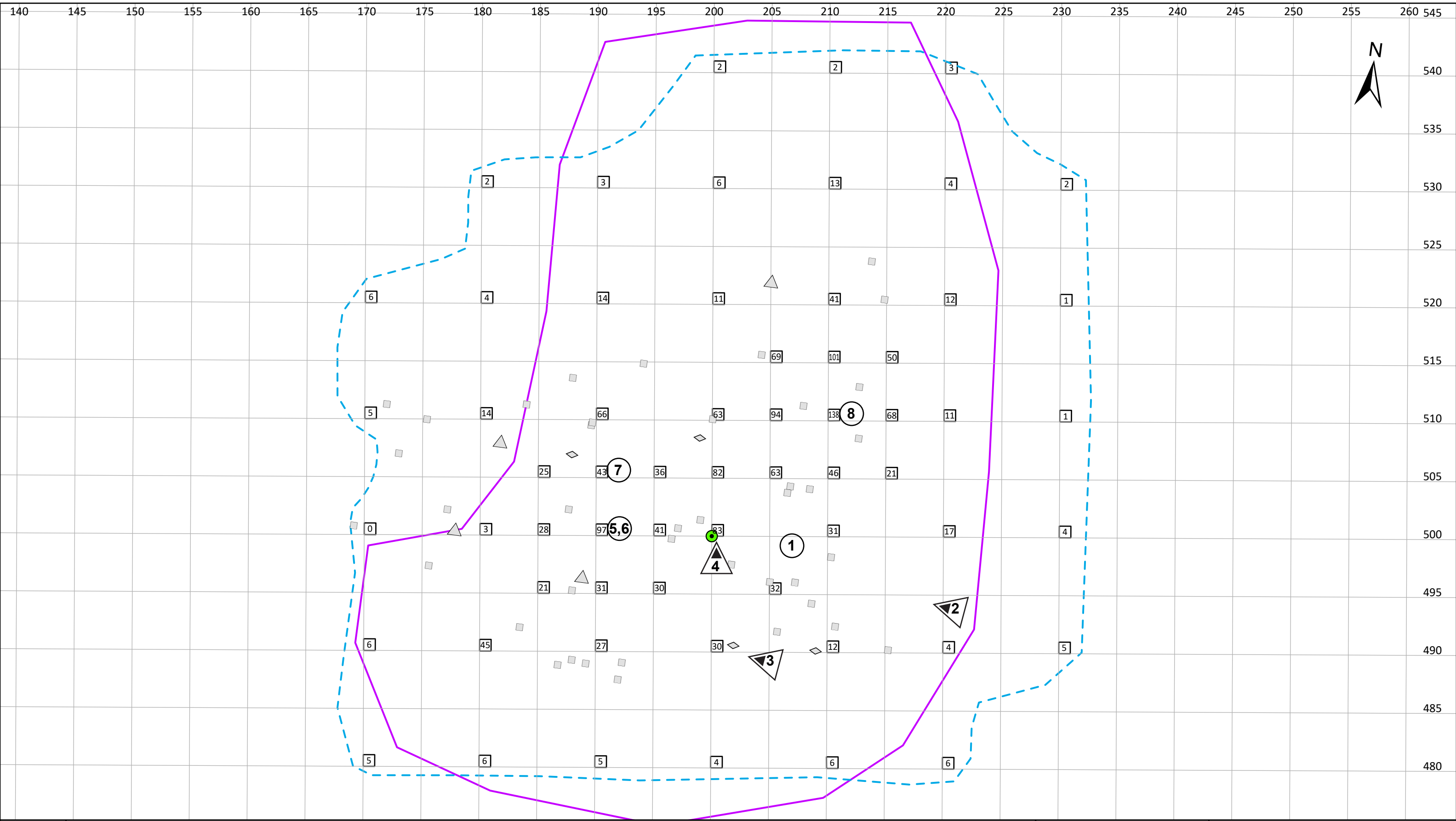


Figure 1: Location of the Subject Property



	 STAGE 3 SITE LIMIT BAHB-19	 KITCHEN/FOOD	 LOCATION AND DIRECTION OF PHOTOGRAPH	 Metres	
	 STAGE 2 SITE LIMIT BAHB-19	 ARCHITECTURAL			
	 STAGE 3 TEST UNITS WITH COUNT	 MISC.	 LOCATION OF PHOTOGRAPH	ASI Project No.: Date: 11/2/2021 10:47 AM	
	 DATUM (500-200)			Drawn By: rlatour File: Stage 3 CSP BaHb-19	
				Projection: NAD 1983 UTM Zone 17N Scale: 1:300 Page Size: 11 x 17	

Figure 2: Stage 3 site-specific assessment of the James Taggart site (BaHb-19)

## **APPENDIX A: The James Taggart Site (BaHb-19) Historical Artifact Inventory**





### Stage 3 Non-Ceramic Inventory

Taggart Site (BaHb-19)

Context					
Cat#	Qty	Stratum	Type	Material	Comments
480-170 (n=2)					
1860	1	Ploughzone	Nail - Machine Cut	Metal - Ferrous	
1861	1	Ploughzone	Nail - Machine Cut	Metal - Ferrous	
480-180 (n=3)					
1120	1	Ploughzone	Window Glass	Glass	Colour: Colourless; Manufacture: Indeterminate
1121	1	Ploughzone	Container - Medicine	Glass	Part of a Patent finish and long cylindrical neck.; Colour: Aqua; Finish: Patent Lip; Manufacture: Indeterminate
1122	1	Ploughzone	Container - Liquor	Glass	Colour: Dark Olive Green; Manufacture: Mouth Blown
480-190 (n=2)					
1130	1	Ploughzone	Container - Unidentified	Glass	Fragment is rounded and thin bodied.; Colour: Aqua; Manufacture: Indeterminate
1870	1	Ploughzone	Nail - Machine Cut	Metal - Ferrous	
480-210 (n=3)					
1880	1	Ploughzone	Nail - Hand-Wrought	Metal - Ferrous	Multiple links.
1881	1	Ploughzone	Nail - Machine Cut	Metal - Ferrous	
1882	1	Ploughzone	Chain Link	Metal - Ferrous	
490-170 (n=2)					
1140	1	Ploughzone	Window Glass	Glass	Colour: Light Aqua; Manufacture: Indeterminate
1141	1	Ploughzone	Container - Unidentified	Glass	Part of a panel.; Colour: Colourless; Manufacture: Moulded
490-180 (n=13)					
1150	6	Ploughzone	Window Glass	Glass	Colour: Light Aqua; Manufacture: Indeterminate
1151	1	Ploughzone	Container - Unidentified	Glass	Fragment is rounded and relatively thin bodied.; Colour: Colourless; Manufacture: Indeterminate
1890	1	Ploughzone	Nail - Hand-Wrought	Metal - Ferrous	
1891	1	Ploughzone	Nail - Machine Cut	Metal - Ferrous	1 x shank only
1892	2	Ploughzone	Nail - Machine Cut	Metal - Ferrous	
1893	1	Ploughzone	Tin Can	Metal - Ferrous	
2230	1	Ploughzone	Faunal - Aquatic Shell	Shell	
490-190 (n=12)					
1160	7	Ploughzone	Window Glass	Glass	Colour: Light Aqua; Manufacture: Indeterminate
1161	1	Ploughzone	Container - Unidentified	Glass	Fragment is rounded and relatively thin bodied.; Colour: Colourless; Manufacture: Indeterminate
1162	1	Ploughzone	Container - Unidentified	Glass	
1163	1	Ploughzone	Container - Unidentified	Glass	Part of a straight-sided panel.; Colour: Colourless; Manufacture: Moulded
1610	1	Ploughzone	Smoking Pipe	White Ball Clay	Fragment is rounded.; Colour: Green; Manufacture: Indeterminate
1900	1	Ploughzone	Nail - Machine Cut	Metal - Ferrous	

### Stage 3 Non-Ceramic Inventory

#### 490-200 (n=19)

1170	2	Ploughzone	Window Glass	Glass	Colour: Light Aqua; Manufacture: Indeterminate
1171	1	Ploughzone	Container - Unidentified	Glass	Fragment is rounded and relatively thin bodied.; Colour: Colourless; Manufacture: Indeterminate
1172	1	Ploughzone	Container - Unidentified	Glass	Colour: Solarized; Manufacture: Indeterminate
1173	1	Ploughzone	Table Glass	Glass	Colour: Colourless; Manufacture: Press Moulding
1910	1	Ploughzone	Nail - Machine Cut	Metal - Ferrous	
1911	8	Ploughzone	Nail - Machine Cut	Metal - Ferrous	3 x shank only
1912	2	Ploughzone	Unidentified	Metal - Ferrous	Thin metal fragments.
2240	2	Ploughzone	Faunal - Mammal	Bone	
2241	1	Ploughzone	Faunal - Aquatic Shell	Shell	

#### 490-210 (n=6)

1180	1	Ploughzone	Container - Unidentified	Glass	Colour: Light Aqua; Manufacture: Indeterminate
1181	1	Ploughzone	Container - Liquor	Glass	Fragment is rounded. Relatively thin bodied.; Colour: Dark Olive Green; Manufacture: Mouth Blown
1920	1	Ploughzone	Nail - Hand-Wrought	Metal - Ferrous	
1921	2	Ploughzone	Nail - Machine Cut	Metal - Ferrous	
1922	1	Ploughzone	Strapping	Metal - Ferrous	Band has a nail in situ.

#### 490-220 (n=4)

1190	1	Ploughzone	Container - Unidentified	Glass	Part of a flat panel.; Colour: Aqua; Manufacture: Indeterminate
1191	1	Ploughzone	Container - Unidentified	Glass	Body is rounded.; Colour: Light Aqua; Manufacture: Indeterminate
1930	1	Ploughzone	Nail - Machine Cut	Metal - Ferrous	
1931	1	Ploughzone	Nail - Machine Cut	Metal - Ferrous	

#### 490-230 (n=3)

1200	2	Ploughzone	Window Glass	Glass	Colour: Light Aqua; Manufacture: Indeterminate
1201	1	Ploughzone	Container - Unidentified	Glass	Colour: Colourless; Manufacture: Indeterminate

#### 495-185 (n=7)

1210	3	Ploughzone	Window Glass	Glass	Colour: Light Aqua; Manufacture: Indeterminate
1940	2	Ploughzone	Nail - Machine Cut	Metal - Ferrous	1 x shank only
1941	1	Ploughzone	Nail - Wire	Metal - Ferrous	
1942	1	Ploughzone	Unidentified	Metal - Ferrous	Item has appearance of a deliberately bent machine-cut nail shank but one end has round profile.

#### 495-190 (n=9)

1220	3	Ploughzone	Window Glass	Glass	Colour: Light Aqua; Manufacture: Indeterminate
1221	1	Ploughzone	Container - Unidentified	Glass	Fragment is rounded.; Colour: Aqua; Manufacture: Indeterminate
1222	1	Ploughzone	Container - Liquor	Glass	Colour: Dark Olive Green; Manufacture: Mouth Blown
1223	2	Ploughzone	Container - Liquor	Glass	Fragments are rounded.; Colour: Dark Olive Green; Manufacture: Mouth Blown
1620	1	Ploughzone	Slate Tablet	Slate	
1950	1	Ploughzone	Nail - Machine Cut	Metal - Ferrous	

### Stage 3 Non-Ceramic Inventory

#### 495-195 (n=12)

1230	2	Ploughzone	Window Glass	Glass	Colour: Light Aqua; Manufacture: Indeterminate
1231	2	Ploughzone	Container - Unidentified	Glass	Part of a recessed panel with straight side and arched top.; Colour: Light Aqua; Manufacture: Moulded
1232	1	Ploughzone	Container - Unidentified	Glass	Part of a recessed panel with straight side and arched top.; Colour: Aqua; Manufacture: Moulded
1233	1	Ploughzone	Container - Unidentified	Glass	Part of a panel.; Colour: Light Aqua; Manufacture: Moulded
1234	1	Ploughzone	Container - Unidentified	Glass	Fragment is rounded. Relatively thin bodied.; Colour: Green; Manufacture: Indeterminate
1960	1	Ploughzone	Nail - Hand-Wrought	Metal - Ferrous	
1961	2	Ploughzone	Nail - Machine Cut	Metal - Ferrous	1 x shank only
1962	1	Ploughzone	Strapping	Metal - Ferrous	
1963	1	Ploughzone	Unidentified	Metal - Ferrous	Part of a cast item.

#### 495-205 (n=10)

1240	1	Ploughzone	Container - Liquor	Glass	Cylindrical.; Colour: Dark Olive Green; Manufacture: Mouth Blown
1970	1	Ploughzone	Nail - Machine Cut	Metal - Ferrous	
1971	5	Ploughzone	Nail - Machine Cut	Metal - Ferrous	
1972	1	Ploughzone	Strapping	Metal - Ferrous	Part of a wide flat band.
2250	2	Ploughzone	Faunal - Mammal	Bone	

#### 500-180 (n=2)

1250	1	Ploughzone	Window Glass	Glass	Colour: Light Aqua; Manufacture: Indeterminate
1251	1	Ploughzone	Container - Unidentified	Glass	Fragment is rounded and thin bodied. Vertical mould seam. There is indeterminate embossing, a curved line with a loop is visible, might be part of a brand.; Embossing: Indeterminate; Colour: Colourless; Manufacture: Contact Moulded

#### 500-185 (n=22)

1260	9	Ploughzone	Window Glass	Glass	Colour: Light Aqua; Manufacture: Indeterminate
1261	1	Ploughzone	Container - Unidentified	Glass	Part of a straight-sided panel.; Colour: Aqua; Manufacture: Moulded
1262	1	Ploughzone	Container - Unidentified	Glass	Part of a panel with an arched top.; Colour: Light Aqua; Manufacture: Moulded
1263	1	Ploughzone	Container - Unidentified	Glass	Part of a panel.; Colour: Colourless; Manufacture: Moulded
1630	1	Ploughzone	Smoking Pipe	White Ball Clay	
1980	6	Ploughzone	Nail - Machine Cut	Metal - Ferrous	4 x shank only
1981	1	Ploughzone	Screw	Metal - Ferrous	
1982	1	Ploughzone	Bolt	Metal - Ferrous	Shank with square nut in situ.
1983	1	Ploughzone	Bar	Metal - Ferrous	Bar with a flat end that widens slightly, other end broken.

#### 500-190 (n=57)

1270	18	Ploughzone	Window Glass	Glass	Colour: Light Aqua; Manufacture: Indeterminate
1271	2	Ploughzone	Container - Unidentified	Glass	Cup bottom mould. Small cylindrical bottle, likely medicinal.; Colour: Aqua; Manufacture: 2/3/4 Piece Vertical Body Mould with Separate Base
1272	2	Ploughzone	Container - Unidentified	Glass	Fragments are rounded and thin bodied. Likely medicinal.; Colour: Light Aqua; Manufacture: Indeterminate
1273	3	Ploughzone	Container - Unidentified	Glass	Fragments are slightly rounded.; Colour: Aqua; Manufacture: Indeterminate

### Stage 3 Non-Ceramic Inventory

1274	1	Ploughzone	Container - Unidentified	Glass	Part of a bottle panel with embossed text positioned in what appears to be a semi-circle.; Embossing: _EST_; Colour: Light Aqua; Manufacture: Contact Moulded
1275	1	Ploughzone	Container - Unidentified	Glass	Cylindrical and thick bodied. Might be a water bottle.; Colour: Light Aqua; Manufacture: Indeterminate
1276	1	Ploughzone	Container - Unidentified	Glass	Fragment is rounded.; Colour: Colourless; Manufacture: Indeterminate
1640	1	Ploughzone	Ink Well	Stoneware	
1641	1	Ploughzone	Ink Well	Stoneware	
1642	1	Ploughzone	Button	Ceramic	Dish Type Prosser button.; One Piece; Ceramic; Diameter: 9.8 mm
1643	1	Ploughzone	Button	Bone	One Piece; Bone; Diameter: 17.6 mm
1990	4	Ploughzone	Nail - Machine Cut	Metal - Ferrous	
1991	16	Ploughzone	Nail - Machine Cut	Metal - Ferrous	6 x shank only
1992	1	Ploughzone	Tool - Other	Metal - Ferrous	Part of a wrench.
1993	2	Ploughzone	Unidentified	Metal - Ferrous	Thin metal fragments.
2260	2	Ploughzone	Faunal - Mammal	Bone	
<b>500-195 (n=24)</b>					
1280	7	Ploughzone	Window Glass	Glass	Colour: Light Aqua; Manufacture: Indeterminate
1281	1	Ploughzone	Container - Unidentified	Glass	Fragment is rounded.; Colour: Aqua; Manufacture: Indeterminate
1282	1	Ploughzone	Container - Unidentified	Glass	Finish is a narrow bead with mould seam along its lower circumference. Small mouth opening. Cylindrical neck. Might be medicinal.; Colour: Green; Finish: One Part; Manufacture: Machine Made
1650	1	Ploughzone	Smoking Pipe	White Ball Clay	Stem fragment has some yellow glaze.
1651	1	Ploughzone	Button	Bone	One Piece; Bone; Diameter: 17.6 mm
2000	2	Ploughzone	Nail - Machine Cut	Metal - Ferrous	
2001	7	Ploughzone	Nail - Machine Cut	Metal - Ferrous	3 x shank only
2002	1	Ploughzone	Nail - Hand-Wrought	Metal - Ferrous	
2003	1	Ploughzone	Horseshoe Nail	Metal - Ferrous	
2004	1	Ploughzone	Strapping	Metal - Ferrous	
2005	1	Ploughzone	Tin Can	Metal - Ferrous	
<b>500-200 (n=31)</b>					
1290	6	Ploughzone	Window Glass	Glass	Colour: Light Aqua; Manufacture: Indeterminate
1291	2	Ploughzone	Container - Unidentified	Glass	Colour: Aqua; Manufacture: Indeterminate
1292	1	Ploughzone	Container - Unidentified	Glass	Fragment is rounded and thin bodied. Dark aqua colour.; Colour: Aqua; Manufacture: Indeterminate
1293	1	Ploughzone	Container - Unidentified	Glass	Part of a straight-sided panel.; Colour: Colourless; Manufacture: Moulded
1294	1	Ploughzone	Container - Unidentified	Glass	Part of a flat panel with embossed text.; Embossing: _N_; Colour: Amber; Manufacture: Contact Moulded
1660	3	Ploughzone	Smoking Pipe	White Ball Clay	
1661	1	Ploughzone	Button	Ceramic	Dish Type Prosser button.; One Piece; Ceramic; Diameter: 10.7 mm
2010	8	Ploughzone	Nail - Machine Cut	Metal - Ferrous	4 x shank only
2011	3	Ploughzone	Unidentified	Metal - Ferrous	Thin metal fragments.
2012	1	Ploughzone	Unidentified	Metal - Ferrous	Irregularly shaped piece, a rod with a perpendicular rod across one end and another short perpendicular rod off main component is visible.
2270	4	Ploughzone	Faunal - Mammal	Bone	

### Stage 3 Non-Ceramic Inventory

#### 500-210 (n=18)

1300	1	Ploughzone	Window Glass	Glass	Colour: Light Aqua; Manufacture: Indeterminate
1301	1	Ploughzone	Container - Unidentified	Glass	Colour: Light Aqua; Manufacture: Indeterminate
1302	1	Ploughzone	Container - Unidentified	Glass	Base has one straight side present, likely a rectangular profile. A faint pontil scar is visible. One flat body panel also present. Likely a small medicinal bottle.; Colour: Aqua; Manufacture: Mouth Blown
1303	1	Ploughzone	Container - Unidentified	Glass	Fragment is the corner of a straight-sided base. Thermally altered.; Colour: Colourless; Manufacture: Indeterminate
1304	1	Ploughzone	Container - Unidentified	Glass	Fragment is rounded and relatively thin bodied.; Colour: Colourless; Manufacture: Indeterminate
1670	1	Ploughzone	Smoking Pipe	White Ball Clay	Plain pipe bowl fragment.
2020	1	Ploughzone	Nail - Machine Cut	Metal - Ferrous	
2021	7	Ploughzone	Nail - Machine Cut	Metal - Ferrous	6 x shank only
2022	1	Ploughzone	Strapping	Metal - Ferrous	
2023	1	Ploughzone	Tin Can	Metal - Ferrous	
2024	1	Ploughzone	Unidentified	Metal - Ferrous	Thin metal fragment.
2280	1	Ploughzone	Faunal - Mammal	Bone	

#### 500-220 (n=11)

1310	2	Ploughzone	Window Glass	Glass	Colour: Light Aqua; Manufacture: Indeterminate
1311	2	Ploughzone	Container - Unidentified	Glass	Fragments are rounded.; Colour: Light Aqua; Manufacture: Indeterminate
2030	1	Ploughzone	Nail - Hand-Wrought	Metal - Ferrous	
2031	1	Ploughzone	Nail - Machine Cut	Metal - Ferrous	
2032	2	Ploughzone	Nail - Machine Cut	Metal - Ferrous	1 x shank only
2033	1	Ploughzone	Nail - Wire	Metal - Ferrous	
2290	1	Ploughzone	Faunal - Mammal	Bone	
2291	1	Ploughzone	Faunal - Aquatic Shell	Shell	

#### 500-230 (n=2)

1320	1	Ploughzone	Container - Unidentified	Glass	Cylindrical and thick bodied.; Colour: Solarized; Manufacture: Indeterminate
1680	1	Ploughzone	Smoking Pipe	White Ball Clay	Part of a plain pipe bowl and spur.

#### 505-185 (n=12)

1330	1	Ploughzone	Window Glass	Glass	Colour: Light Aqua; Manufacture: Indeterminate
1331	2	Ploughzone	Container - Unidentified	Glass	Fragments are rounded.; Colour: Light Aqua; Manufacture: Indeterminate
1690	1	Ploughzone	Button	Ceramic	Dish Type Prosser button.; One Piece; Ceramic; Diameter: 13.3 mm
1691	1	Ploughzone	Coin	Metal - Cuprous	Surface worn, reverse of coin likely has the double maple leaf on twig. ELIZABETH II D G REGINA inscription is c. 1965+.; One Cent (); Worn - Heavy condition; Obverse: Right facing bust, inscription: ELI_ / D.G RE_; Reverse: Image of maple leaf, inscripti
2040	5	Ploughzone	Nail - Machine Cut	Metal - Ferrous	2 x shank only
2041	1	Ploughzone	Unidentified	Metal - Ferrous	Thin metal fragment.
2300	1	Ploughzone	Faunal - Mammal	Bone	

#### 505-190 (n=25)

1340	12	Ploughzone	Window Glass	Glass	Colour: Light Aqua; Manufacture: Indeterminate
------	----	------------	--------------	-------	--

### Stage 3 Non-Ceramic Inventory

1341	1	Ploughzone	Container - Unidentified	Glass	Small portion of base heel and lower body of a small rounded bottle. Thin bodied.; Colour: Light Aqua; Manufacture: Indeterminate
1342	1	Ploughzone	Container - Unidentified	Glass	Fragment is rounded and relatively thin bodied.; Colour: Aqua; Manufacture: Indeterminate
1343	1	Ploughzone	Container - Unidentified	Glass	Cylindrical and relatively thick bodied.; Colour: Green; Manufacture: Indeterminate
1700	1	Ploughzone	Figurine	Ceramic	Small fragment.
2050	2	Ploughzone	Nail - Machine Cut	Metal - Ferrous	
2051	3	Ploughzone	Nail - Machine Cut	Metal - Ferrous	
2052	1	Ploughzone	Horseshoe	Metal - Ferrous	
2053	1	Ploughzone	Unidentified	Metal - Ferrous	Thin metal fragment.
2310	2	Ploughzone	Faunal - Mammal	Bone	
<b>505-195 (n=17)</b>					
1350	3	Ploughzone	Window Glass	Glass	Colour: Light Aqua; Manufacture: Indeterminate
1351	1	Ploughzone	Container - Unidentified	Glass	Fragment is rounded and thin bodied.; Colour: Light Aqua; Manufacture: Indeterminate
1352	1	Ploughzone	Container - Unidentified	Glass	Fragment is rounded.; Colour: Light Aqua; Manufacture: Indeterminate
1353	1	Ploughzone	Container - Unidentified	Glass	Part of a straight-sided and slightly recessed panel.; Colour: Light Aqua; Manufacture: Moulded
1710	1	Ploughzone	Ink Well	Stoneware	
2060	1	Ploughzone	Nail - Hand-Wrought	Metal - Ferrous	
2061	1	Ploughzone	Nail - Machine Cut	Metal - Ferrous	
2062	5	Ploughzone	Nail - Machine Cut	Metal - Ferrous	2 x shank only
2063	1	Ploughzone	Unidentified	Metal - Ferrous	Slightly curved bar, one end broken, intact end tapers. Hand-wrought. 3 x nails in situ along its length.
2320	2	Ploughzone	Faunal - Mammal	Bone	
<b>505-200 (n=39)</b>					
1360	5	Ploughzone	Window Glass	Glass	Colour: Light Aqua; Manufacture: Indeterminate
1361	1	Ploughzone	Container - Unidentified	Glass	Fragment is rounded and thin bodied.; Colour: Light Aqua; Manufacture: Indeterminate
1362	2	Ploughzone	Container - Unidentified	Glass	Fragments are rounded and relatively thin bodied.; Colour: Colourless; Manufacture: Indeterminate
1363	1	Ploughzone	Container - Unidentified	Glass	Part of a flat panel of a large bottle.; Colour: Amber; Manufacture: Indeterminate
1364	1	Ploughzone	Vial	Glass	Colour: Light Aqua; Manufacture: 2/3/4 Piece Vertical Body Mould with Separate Base
1720	1	Ploughzone	Smoking Pipe	White Ball Clay	
1721	2	Ploughzone	Smoking Pipe	White Ball Clay	Plain pipe bowl fragments.
1722	1	Ploughzone	Smoking Pipe	White Ball Clay	Pipe bowl fragment with a band of wide ribs and plain band visible.
1723	1	Ploughzone	Slate Tablet	Slate	
2070	7	Ploughzone	Nail - Machine Cut	Metal - Ferrous	
2071	7	Ploughzone	Nail - Machine Cut	Metal - Ferrous	2 x shank only
2072	1	Ploughzone	Nail - Indeterminate	Metal - Ferrous	
2073	1	Ploughzone	Nail - Wire	Metal - Ferrous	
2074	1	Ploughzone	Screw	Metal - Ferrous	
2075	1	Ploughzone	Strapping	Metal - Ferrous	
2076	3	Ploughzone	Unidentified	Metal - Ferrous	Thin metal fragments.
2077	1	Ploughzone	Hook	Metal - Ferrous	Item appears similar to a J-hook but rather than an eye the end is flat and broad.
2330	2	Ploughzone	Faunal - Mammal	Bone	

### Stage 3 Non-Ceramic Inventory

#### 505-205 (n=17)

1370	2	Ploughzone	Window Glass	Glass	Colour: Light Aqua; Manufacture: Indeterminate Each stem has an impressed maker's mark. 1 x reads: _GALL / GL_ and 1 x _ALL / GL_. i.e. likely represents two pipes with maker D. McDougall, Glasgow, c. 1846-1967 (Kenyon 1984).
1730	2	Ploughzone	Smoking Pipe	White Ball Clay	
2080	4	Ploughzone	Nail - Machine Cut	Metal - Ferrous	Item is flat with a rounded end, two rivets in situ. This rounded section tapers into a narrow band, broken. Thin metal fragment.
2081	1	Ploughzone	Nail - Wire	Metal - Ferrous	
2082	1	Ploughzone	Fencing Staple	Metal - Ferrous	
2083	1	Ploughzone	Unidentified	Metal - Ferrous	
2084	1	Ploughzone	Unidentified	Metal - Ferrous	
2340	4	Ploughzone	Faunal - Mammal	Bone	
2341	1	Ploughzone	Faunal - Aquatic Shell	Shell	

#### 505-210 (n=13)

1380	4	Ploughzone	Window Glass	Glass	Colour: Light Aqua; Manufacture: Indeterminate
1381	1	Ploughzone	Container - Unidentified	Glass	Fragment is rounded. Vertical mould seam.; Colour: Light Aqua; Manufacture: Moulded
1740	1	Ploughzone	Spoon - Table	Metal - Ferrous	Teaspoon bowl.
2090	1	Ploughzone	Nail - Hand-Wrought	Metal - Ferrous	
2091	2	Ploughzone	Nail - Machine Cut	Metal - Ferrous	1 x shank only
2092	1	Ploughzone	Unidentified	Metal - Ferrous	Thin metal fragment.
2350	2	Ploughzone	Faunal - Mammal	Bone	
2351	1	Ploughzone	Faunal - Aquatic Shell	Shell	

#### 505-215 (n=7)

1390	1	Ploughzone	Window Glass	Glass	Colour: Light Aqua; Manufacture: Indeterminate
1391	1	Ploughzone	Container - Food	Glass	Extract bottle. Complete patent finish and long cylindrical ball neck. Opposing vertical mould seams end towards upper portion of neck. Part of shoulder present, a flat side panel is visible.; Colour: Light Aqua; Finish: Patent Lip; Manufacture: 2/3/4 Piec
1392	2	Ploughzone	Container - Unidentified	Glass	Fragments are rounded and thin bodied.; Colour: Colourless; Manufacture: Indeterminate
1393	1	Ploughzone	Container - Unidentified	Glass	Part of a straight-sided and recessed panel with indeterminate embossing visible.; Embossing: Indeterminate; Colour: Colourless; Manufacture: Contact Moulded
2360	2	Ploughzone	Faunal - Mammal	Bone	

#### 510-170 (n=3)

1400	2	Ploughzone	Window Glass	Glass	Colour: Light Aqua; Manufacture: Indeterminate
2100	1	Ploughzone	File	Metal - Ferrous	

#### 510-180 (n=9)

1410	4	Ploughzone	Window Glass	Glass	Colour: Light Aqua; Manufacture: Indeterminate
1411	1	Ploughzone	Lamp Chimney	Glass	Colour: Colourless; Manufacture: Indeterminate
1750	1	Ploughzone	Smoking Pipe	White Ball Clay	
2110	3	Ploughzone	Nail - Machine Cut	Metal - Ferrous	1 x shank only

#### 510-190 (n=29)

1420	10	Ploughzone	Window Glass	Glass	Colour: Light Aqua; Manufacture: Indeterminate
------	----	------------	--------------	-------	--



### Stage 3 Non-Ceramic Inventory

1421	1	Ploughzone	Container - Unidentified	Glass	Fragment is rounded and thin bodied.; Colour: Light Aqua; Manufacture: Indeterminate
1422	1	Ploughzone	Container - Unidentified	Glass	Fragment is rounded and relatively thin bodied.; Colour: Colourless; Manufacture: Indeterminate
1423	2	Ploughzone	Container - Liquor	Glass	Fragments are rounded.; Colour: Dark Olive Green; Manufacture: Mouth Blown
1424	1	Ploughzone	Container - Unidentified	Glass	Part of a panel.; Colour: Green; Manufacture: Moulded
1760	1	Ploughzone	Smoking Pipe	White Ball Clay	
2120	4	Ploughzone	Nail - Machine Cut	Metal - Ferrous	
2121	5	Ploughzone	Nail - Machine Cut	Metal - Ferrous	
2122	1	Ploughzone	Wire	Metal - Ferrous	
2123	1	Ploughzone	Strapping	Metal - Ferrous	
2124	1	Ploughzone	Tin Can	Metal - Ferrous	
2370	1	Ploughzone	Faunal - Aquatic Shell	Shell	

#### 510-200 (n=15)

1430	3	Ploughzone	Window Glass	Glass	Colour: Colourless; Manufacture: Indeterminate
1431	1	Ploughzone	Container - Liquor	Glass	Part of a champagne finish with gently rounded rim and a wide applied band.; Colour: Green; Finish: Champagne; Manufacture: Mouth Blown
1770	1	Ploughzone	Smoking Pipe	White Ball Clay	Pipe stem fragment with impressed maker's mark: THO.WH_ and on reverse: _H. i.e. maker is likely Thomas White & Co, Edinburgh, c. 1823 to 1876 (Walker 1970).
1771	1	Ploughzone	Smoking Pipe	White Ball Clay	Pipe stem fragment with impressed maker's mark: _AL
1772	1	Ploughzone	Smoking Pipe	White Ball Clay	
2130	1	Ploughzone	Nail - Machine Cut	Metal - Ferrous	
2131	5	Ploughzone	Nail - Machine Cut	Metal - Ferrous	2 x shank only
2380	1	Ploughzone	Faunal - Mammal	Bone	
2381	1	Ploughzone	Faunal - Mammal	Bone	

#### 510-205 (n=29)

1440	1	Ploughzone	Window Glass	Glass	Colour: Light Aqua; Manufacture: Indeterminate
1441	1	Ploughzone	Lamp Chimney	Glass	Colour: Colourless; Manufacture: Indeterminate
1442	1	Ploughzone	Container - Unidentified	Glass	Fragment is rounded and thin bodied.; Colour: Light Aqua; Manufacture: Indeterminate
1443	1	Ploughzone	Container - Unidentified	Glass	Fragment is rounded and relatively thin bodied.; Colour: Aqua; Manufacture: Indeterminate
1444	1	Ploughzone	Container - Medicine	Glass	Lower portion of finish and part of cylindrical neck of a small bottle.; Colour: Light Aqua; Finish: Indeterminate; Manufacture: Indeterminate
1445	1	Ploughzone	Container - Medicine	Glass	Almost complete patent finish and cylindrical neck. Opposing vertical mould seams extend partially up neck. Portion of rounded shoulder visible. Small bottle.; Colour: Aqua; Finish: Patent Lip; Manufacture: 2/3/4 Piece Vertical Body Mould with Separate Ba
1446	1	Ploughzone	Container - Medicine	Glass	Part of a Patent finish and cylindrical neck.; Colour: Solarized; Finish: Patent Lip; Manufacture: Indeterminate
1780	3	Ploughzone	Smoking Pipe	White Ball Clay	Plain pipe bowl fragments, 1 x with spur.
1781	1	Ploughzone	Smoking Pipe	White Ball Clay	
1782	1	Ploughzone	Smoking Pipe	White Ball Clay	Pipe stem fragment with impressed maker's mark: _GALL / G_, i.e. likely Duncan McDougall, Glasgow, c. 1846-1967 (Kenyon 1984). Some yellow glaze visible.
1783	1	Ploughzone	Smoking Pipe	White Ball Clay	Indeterminate impressed maker's mark, might read CO_
1784	1	Ploughzone	Button	Ceramic	Dish Type Prosser button.; One Piece; Ceramic; Diameter: 11.2 mm

### Stage 3 Non-Ceramic Inventory

2140	1	Ploughzone	Nail - Hand-Wrought	Metal - Ferrous	
2141	5	Ploughzone	Nail - Machine Cut	Metal - Ferrous	
2142	1	Ploughzone	Strapping	Metal - Ferrous	Wide overlapping bands, riveted together.
2143	2	Ploughzone	Screw	Metal - Ferrous	
2144	1	Ploughzone	Unidentified	Metal - Ferrous	Thin metal fragment.
2145	1	Ploughzone	Unidentified	Metal - Cuprous	Item has appearance of a round lid but has two small holes on its top. Top has stamped decoration, two rings with short vertical lines, one around outer circumference. One side has three tabs, likely an attachment, opposite side tabs are broken.
2390	4	Ploughzone	Faunal - Mammal	Bone	
<b>510-210 (n=39)</b>					
1450	3	Ploughzone	Window Glass	Glass	Colour: Light Aqua; Manufacture: Indeterminate
1451	5	Ploughzone	Lamp Chimney	Glass	Colour: Colourless; Manufacture: Indeterminate
1452	1	Ploughzone	Container - Unidentified	Glass	Fragment is rounded and relatively thin bodied.; Colour: Colourless; Manufacture: Indeterminate
1453	1	Ploughzone	Container - Unidentified	Glass	Part of a straight-sided and recessed panel.; Colour: Light Aqua; Manufacture: Moulded
1454	3	Ploughzone	Container - Unidentified	Glass	Fragments are rounded.; Colour: Aqua; Manufacture: Indeterminate
1455	1	Ploughzone	Container - Unidentified	Glass	Part of a flat panel with embossed text.; Embossing: _AW_ // _; Colour: Light Aqua; Manufacture: Contact Moulded
1456	1	Ploughzone	Container - Unidentified	Glass	Part of a cylindrical neck and rounded shoulder of a small bottle, likely medicinal. Vertical mould seam extends partly up neck.; Colour: Aqua; Manufacture: 2/3/4 Piece Vertical Body Mould with Separate Base
1457	1	Ploughzone	Container - Medicine	Glass	Part of a Perry Davis finish and long cylindrical neck.; Colour: Aqua; Finish: Perry Davis Type; Manufacture: Indeterminate
1790	1	Ploughzone	Smoking Pipe	White Ball Clay	
1791	1	Ploughzone	Grommet	Metal - Cuprous	Grommet with leather in situ.
1792	2	Ploughzone	Shoe Fragment	Leather	2 x leather boot or shoe heels with ferrous nails in situ.
2150	1	Ploughzone	Nail - Hand-Wrought	Metal - Ferrous	
2151	2	Ploughzone	Nail - Hand-Wrought	Metal - Ferrous	1 x shank only
2152	1	Ploughzone	Nail - Machine Cut	Metal - Ferrous	
2153	6	Ploughzone	Nail - Machine Cut	Metal - Ferrous	1 x shank only
2154	1	Ploughzone	Horseshoe Nail	Metal - Ferrous	
2155	1	Ploughzone	Wire	Metal - Ferrous	
2156	1	Ploughzone	Tin Can	Metal - Ferrous	
2157	2	Ploughzone	Unidentified	Metal - Ferrous	Thin metal fragments.
2400	2	Ploughzone	Faunal - Mammal	Bone	
2401	2	Ploughzone	Faunal - Mammal	Bone	
<b>510-215 (n=23)</b>					
1460	2	Ploughzone	Window Glass	Glass	Colour: Light Aqua; Manufacture: Indeterminate
1461	1	Ploughzone	Container - Unidentified	Glass	Part of a 'Straight finish' with ground rim and short cylindrical neck. Small mouth opening.; Colour: Light Aqua; Finish: One Part; Manufacture: Mouth Blown
1462	1	Ploughzone	Container - Unidentified	Glass	Fragment is rounded.; Colour: Aqua; Manufacture: Indeterminate
1463	2	Ploughzone	Container - Unidentified	Glass	Fragments are rounded.; Colour: Colourless; Manufacture: Indeterminate
1464	2	Ploughzone	Container - Liquor	Glass	Cylindrical and thick bodied.; Colour: Dark Olive Green; Manufacture: Mouth Blown

### Stage 3 Non-Ceramic Inventory

1800	1	Ploughzone	Slate Pencil	Slate	
1801	1	Ploughzone	Smoking Pipe	White Ball Clay	Pipe stem fragment with small portion of plain lower bowl.
1802	1	Ploughzone	Smoking Pipe	White Ball Clay	Pipe stem fragment with impressed maker's mark: _UE_ / _LE_
2160	1	Ploughzone	Nail - Machine Cut	Metal - Ferrous	
2161	4	Ploughzone	Nail - Machine Cut	Metal - Ferrous	1 x shank only
2162	1	Ploughzone	Unidentified	Metal - Ferrous	Narrow and irregularly shaped shank. At central point along length it widens slightly and there is a rivet hole, its end is curved. Might be a machinery component.
2163	3	Ploughzone	Unidentified	Metal - Ferrous	Thin metal fragments. Might be tin can.
2410	3	Ploughzone	Faunal - Mammal	Bone	

#### 515-205 (n=10)

1470	1	Ploughzone	Container - Unidentified	Glass	Part of a straight-sided and slightly recessed panel with vertical embossed text.; Embossing: _RK // _OCR_; Colour: Aqua; Manufacture: Contact Moulded
1471	1	Ploughzone	Container - Unidentified	Glass	Fragment is rounded. Vertical mould seam.; Colour: Aqua; Manufacture: Moulded
1472	1	Ploughzone	Container - Unidentified	Glass	Fragment is rounded.; Colour: Light Aqua; Manufacture: Indeterminate
1810	1	Ploughzone	Smoking Pipe	White Ball Clay	Pipe stem tip with yellow glaze.
2170	1	Ploughzone	Nail - Machine Cut	Metal - Ferrous	
2171	1	Ploughzone	Nail - Machine Cut	Metal - Ferrous	
2172	1	Ploughzone	Harness Component	Metal - Ferrous	Small rectangular buckle.
2173	1	Ploughzone	Unidentified	Metal - Ferrous	Thin metal band fragment.
2420	2	Ploughzone	Faunal - Mammal	Bone	

#### 515-210 (n=17)

1480	2	Ploughzone	Window Glass	Glass	Colour: Light Aqua; Manufacture: Indeterminate
1481	1	Ploughzone	Container - Unidentified	Glass	Fragment is rounded and thin bodied.; Colour: Aqua; Manufacture: Indeterminate
1482	1	Ploughzone	Container - Unidentified	Glass	Part of a straight-sided panel.; Colour: Light Aqua; Manufacture: Contact Moulded
1483	3	Ploughzone	Container - Unidentified	Glass	Part of straight-sided and recessed panel.; Colour: Colourless; Manufacture: Moulded
1820	1	Ploughzone	Smoking Pipe	White Ball Clay	Plain pipe bowl fragment.
1821	1	Ploughzone	Smoking Pipe	White Ball Clay	
2180	3	Ploughzone	Nail - Machine Cut	Metal - Ferrous	1 x shank only
2181	1	Ploughzone	Fencing Staple	Metal - Ferrous	
2182	1	Ploughzone	Strapping	Metal - Ferrous	
2183	1	Ploughzone	Unidentified	Metal - Ferrous	Thin metal fragments.
2430	1	Ploughzone	Faunal - Mammal	Bone	
2431	1	Ploughzone	Faunal - Mammal	Bone	

#### 515-215 (n=11)

1490	1	Ploughzone	Window Glass	Glass	Colour: Light Aqua; Manufacture: Indeterminate
1491	1	Ploughzone	Container - Unidentified	Glass	Part of a straight-sided and recessed panel.; Colour: Light Aqua; Manufacture: Moulded
1492	1	Ploughzone	Container - Unidentified	Glass	Colour: Colourless; Manufacture: Indeterminate
1830	1	Ploughzone	Smoking Pipe	White Ball Clay	Pipe stem fragment with impressed maker's mark: _N surrounded with dotted border, reverse indeterminate text also surrounded with a dotted border.
1831	1	Ploughzone	Smoking Pipe	White Ball Clay	Pipe stem fragment with impressed maker's mark: _DE_ and on reverse MONTR_, i.e. a Montreal maker, might be Henderson, c. 1847-1876 (Kenyon 1984).
2190	4	Ploughzone	Nail - Machine Cut	Metal - Ferrous	2 x shank only
2191	1	Ploughzone	Hinge	Metal - Ferrous	

### Stage 3 Non-Ceramic Inventory

2192	1	Ploughzone	Unidentified	Metal - Ferrous	Fragment has appearance of a blade tip but no edge. Might be a machinery component.
<b>520-170 (n=3)</b>					
1500	1	Ploughzone	Lamp Chimney	Glass	Colour: Colourless; Manufacture: Indeterminate
1501	1	Ploughzone	Container - Unidentified	Glass	Fragment is rounded and thin bodied.; Colour: Aqua; Manufacture: Indeterminate
1502	1	Ploughzone	Container - Unidentified	Glass	Colour: Solarized; Manufacture: Indeterminate
<b>520-180 (n=2)</b>					
1510	2	Ploughzone	Container - Unidentified	Glass	Fragments are rounded.; Colour: Aqua; Manufacture: Indeterminate
<b>520-190 (n=6)</b>					
1520	3	Ploughzone	Window Glass	Glass	Colour: Light Aqua; Manufacture: Indeterminate
1521	1	Ploughzone	Container - Unidentified	Glass	Fragment is rounded and thin bodied.; Colour: Light Aqua; Manufacture: Indeterminate
1522	1	Ploughzone	Container - Unidentified	Glass	Fragment is rounded and thin bodied. Vertical mould seam.; Colour: Aqua; Manufacture: Moulded
1523	1	Ploughzone	Container - Liquor	Glass	Colour: Dark Olive Green; Manufacture: Mouth Blown
<b>520-200 (n=2)</b>					
1530	1	Ploughzone	Window Glass	Glass	Colour: Light Aqua; Manufacture: Indeterminate
1531	1	Ploughzone	Table Glass	Glass	Colour: Colourless; Manufacture: Press Moulding
<b>520-210 (n=10)</b>					
1540	1	Ploughzone	Window Glass	Glass	Colour: Colourless; Manufacture: Indeterminate
1541	1	Ploughzone	Container - Unidentified	Glass	Fragment is rounded and relatively thin bodied.; Colour: Colourless; Manufacture: Indeterminate
1542	1	Ploughzone	Container - Unidentified	Glass	Part of a straight-sided and recessed panel with vertical embossed text.; Embossing: Indeterminate; Colour: Light Aqua; Manufacture: Contact Moulded
1543	1	Ploughzone	Container - Unidentified	Glass	Part of a straight-sided and recessed panel.; Colour: Light Aqua; Manufacture: Moulded
1840	1	Ploughzone	Smoking Pipe	White Ball Clay	
2200	1	Ploughzone	Nail - Machine Cut	Metal - Ferrous	
2201	3	Ploughzone	Unidentified	Metal - Ferrous	Thin metal fragments.
2440	1	Ploughzone	Faunal - Mammal	Bone	
<b>520-220 (n=2)</b>					
1550	1	Ploughzone	Window Glass	Glass	Colour: Colourless; Manufacture: Indeterminate
1551	1	Ploughzone	Lamp Chimney	Glass	Plain rim.; Colour: Colourless; Manufacture: Indeterminate
<b>520-230 (n=1)</b>					
2210	1	Ploughzone	Nail - Machine Cut	Metal - Ferrous	
<b>530-190 (n=1)</b>					
1560	1	Ploughzone	Window Glass	Glass	Colour: Light Aqua; Manufacture: Indeterminate
<b>530-200 (n=2)</b>					
1570	1	Ploughzone	Window Glass	Glass	Colour: Light Aqua; Manufacture: Indeterminate
1850	1	Ploughzone	Smoking Pipe	White Ball Clay	Plain pipe bowl fragment.
<b>530-210 (n=3)</b>					
2220	1	Ploughzone	Spoon - Serving	Metal - Ferrous	Spoon bowl.

### Stage 3 Non-Ceramic Inventory

2221	1	Ploughzone	Tin Can	Metal - Ferrous
2450	1	Ploughzone	Faunal - Mammal	Bone

#### 530-220 (n=1)

1580	1	Ploughzone	Container - Unidentified	Glass	Fragment is rounded and relatively thin bodied.; Colour: Light Aqua; Manufacture: Indeterminate
------	---	------------	--------------------------	-------	---

#### 540-200 (n=1)

1590	1	Ploughzone	Container - Unidentified	Glass	Fragment is rounded.; Colour: Solarized; Manufacture: Indeterminate
------	---	------------	--------------------------	-------	---

#### Surface (n=14)

1110	5		Window Glass	Glass	Colour: Light Aqua; Manufacture: Indeterminate
1111	1		Container - Medicine	Glass	Base is rectangular with an open pontil scar. Small bottle.; Colour: Light Aqua; Manufacture: Mouth Blown
1112	1		Container - Unidentified	Glass	Part of a straight-sided and recessed panel.; Colour: Light Aqua; Manufacture: Indeterminate
1113	1		Container - Unidentified	Glass	Base is rectangular with a post bottom mould. Diagonal mould seam joins the circular post mould but does not extend through it. Body has recessed panels. Small bottle. Might be medicinal.; Colour: Aqua; Manufacture: 2/3/4 Piece Vertical Body Mould with Se
1114	1		Container - Unidentified	Glass	Part of a straight-sided panel. Vertical mould seam.; Colour: Aqua; Manufacture: Moulded
1600	2		Smoking Pipe	White Ball Clay	
1601	1		Smoking Pipe	White Ball Clay	Pipe bowl fragment with a 'T' in relief visible - a plain TD pipe.
1602	2		Chamber Pot	Ceramic	Ironstone chamber pot, wide flat rim.

**Grand Total : 637 artifacts**

## Stage 3 Ceramic Inventory

Taggart Site (BaHb-19)

Context						
Cat#	Qty	Stratum	Ware	Motif	Form	Comments
<b>480-170 (n=3)</b>						
160	1	Ploughzone	RWE	Transfer Print - Willow Pattern	Plate - Muffin	Portion: Rim; Colour: Blue
161	1	Ploughzone	RWE	Transfer Print - General	Flatware	Pattern is botanical on a linear background; Portion: Rim; Colour: Blue
162	1	Ploughzone	RWE	Unidentified	Flatware	Exfoliated; Portion: Body; Colour: Blue
<b>480-180 (n=3)</b>						
170	1	Ploughzone	RWE	Transfer Print - General	Flatware	Exfoliated; Portion: Rim; Colour: Blue
171	1	Ploughzone	RWE	Undecorated	Flatware	Exfoliated; Portion: Body
172	1	Ploughzone	Yellow Ware	Factory Slip - Mocha	Hollowware	Small fragment; Portion: Body; Colours: Blue; White
<b>480-190 (n=3)</b>						
180	1	Ploughzone	RWE	Transfer Print - General	Flatware	Portion: Body; Colour: Blue
181	1	Ploughzone	RWE	Undecorated	Flatware	Exfoliated; Portion: Body
182	1	Ploughzone	Red Earthenware - Refined	Lustre	Hollowware	Portion: Body; Colour: Brown
<b>480-200 (n=4)</b>						
190	1	Ploughzone	RWE	Transfer Print - General	Flatware	Pattern is floral; Portion: Rim; Colour: Blue
191	1	Ploughzone	RWE	Undecorated	Flatware	Exfoliated; Portion: Body
192	2	Ploughzone	Ironstone	Moulded - Repeating Image	Hollowware	Exfoliated; Portion: Body
<b>480-210 (n=3)</b>						
200	1	Ploughzone	RWE	Transfer Print - General	Flatware	Exfoliated; Portion: Rim; Colour: Purple
201	1	Ploughzone	RWE	Transfer Print - General	Flatware	Pattern is botanical; Portion: Brink; Colour: Dark Brown
202	1	Ploughzone	RWE	Transfer Print - General	Flatware	Pattern is part of a central narrative scene; Portion: Footring; Colour: Blue
<b>480-220 (n=6)</b>						
210	1	Ploughzone	Unidentifiable	Edgeware - Evenly Scalloped	Plate - General	Underside completely exfoliated; Portion: Rim; Colour: Blue
211	1	Ploughzone	Ironstone	Undecorated	Teacup	Portion: Footring
212	1	Ploughzone	Yellow Ware	Undecorated	Hollowware	Exfoliated; Portion: Body
213	3	Ploughzone	Red Earthenware - Coarse	Glazed	Hollowware	Rim is at least partially glazed. Exfoliated; Portion: Rim; Colour: Brown
<b>490-170 (n=4)</b>						
130	1	Ploughzone	RWE	Transfer Print - Willow Pattern	Flatware	Pattern is part of a central narrative scene; Portion: Body; Colour: Blue
131	1	Ploughzone	RWE	Undecorated	Flatware	Exfoliated; Portion: Body
132	1	Ploughzone	Ironstone	Moulded - General	Flatware	Exfoliated; Portion: Body
133	1	Ploughzone	Ironstone	Undecorated	Indeterminate	Small exfoliated fragment; Portion: Body

## Stage 3 Ceramic Inventory

Taggart Site (BaHb-19)

Context						
Cat#	Qty	Stratum	Ware	Motif	Form	Comments
<b>490-180 (n=32)</b>						
140	1	Ploughzone	RWE	Stamped	Teacup	Visible motif is geometric, appears to be chevrons interspersed with dots. Small fragment; Portion: Rim; Colour: Red
141	1	Ploughzone	RWE	Transfer Print - General	Flatware	Exfoliated; Portion: Rim; Colour: Dark Brown
142	1	Ploughzone	RWE	Transfer Print - Willow Pattern	Flatware	Portion: Rim; Colour: Blue
143	1	Ploughzone	Ironstone	Moulded - Ribbed or Panelled	Teacup	Portion: Rim
144	3	Ploughzone	Ironstone	Undecorated	Flatware	Exfoliated; Portion: Body
145	1	Ploughzone	Ironstone	Unidentified	Flatware	Blue staining visible, might be Transfer-Flow; Portion: Body; Colour: Blue
146	1	Ploughzone	Unidentifiable	Unidentified	Indeterminate	Small exfoliated fragment; Portion: Body; Colour: Blue
147	1	Ploughzone	RWE	Undecorated	Flatware	Exfoliated; Portion: Brink
148	4	Ploughzone	RWE	Undecorated	Flatware	Exfoliated; Portion: Body
149	1	Ploughzone	Unidentifiable	Undecorated	Saucer	Exfoliated; Portion: Rim
150	1	Ploughzone	Unidentifiable	Undecorated	Indeterminate	Small exfoliated fragment; Portion: Rim
151	2	Ploughzone	Unidentifiable	Undecorated	Flatware	Exfoliated; Portion: Body
152	5	Ploughzone	Unidentifiable	Undecorated	Indeterminate	Small exfoliated fragments; Portion: Indeterminate
153	3	Ploughzone	Buff Earthenware	Rockingham	Hollowware	Portion: Body; Colour: Brown
154	1	Ploughzone	Red Earthenware - Coarse	Glazed	Hollowware	One side glazed, other exfoliated; Portion: Body; Colour: Dark Brown
155	3	Ploughzone	Red Earthenware - Coarse	Glazed	Hollowware	One side glazed, other exfoliated; Portion: Body; Colour: Light Brown
156	1	Ploughzone	Red Earthenware - Coarse	Unidentified	Hollowware	Base not glazed. Interior exfoliated; Portion: Base
157	1	Ploughzone	Red Earthenware - Coarse	Unidentified	Hollowware	Completely exfoliated; Portion: Body
<b>490-190 (n=15)</b>						
220	1	Ploughzone	RWE	Transfer Print - Willow Pattern	Flatware	Pattern is part of a central narrative scene; Portion: Body; Colour: Blue
221	1	Ploughzone	RWE	Transfer Print - General	Flatware	Exfoliated; Portion: Body; Colour: Purple
222	2	Ploughzone	RWE	Undecorated	Flatware	Exfoliated; Portion: Body
223	1	Ploughzone	Ironstone	Spongeware	Teacup	Motif is open spongeware and extends onto interior; Portion: Rim; Colour: Blue
224	3	Ploughzone	Yellow Ware	Undecorated	Hollowware	Exfoliated; Portion: Body
225	1	Ploughzone	Red Earthenware - Coarse	Glazed	Milk Crock	Single ribbed rim with relatively flat top. Straight sides. Rim and exterior body glazed. Interior exfoliated; Portion: Rim; Colour: Brown
226	5	Ploughzone	Red Earthenware - Coarse	Glazed	Hollowware	One side glazed, other exfoliated; Portion: Body; Colour: Brown
227	1	Ploughzone	Red Earthenware - Coarse	Unidentified	Hollowware	Exterior not glazed. Interior exfoliated; Portion: Body
<b>490-200 (n=11)</b>						
230	1	Ploughzone	RWE	Transfer Print - General	Flatware	Exfoliated; Portion: Body; Colour: Blue

## Stage 3 Ceramic Inventory

Taggart Site (BaHb-19)

### Context

Cat#	Qty	Stratum	Ware	Motif	Form	Comments
231	1	Ploughzone	RWE	Unidentified	Indeterminate	Small exfoliated fragment. Might be spongeware; Portion: Body; Colour: Blue
232	1	Ploughzone	RWE	Undecorated	Teacup	Exfoliated; Portion: Footring
233	3	Ploughzone	RWE	Undecorated	Flatware	Exfoliated; Portion: Body
234	3	Ploughzone	RWE	Undecorated	Indeterminate	Small exfoliated fragments; Portion: Body
235	1	Ploughzone	Unidentifiable	Undecorated	Indeterminate	Completely exfoliated; Portion: Indeterminate
236	1	Ploughzone	Red Earthenware - Coarse	Glazed	Hollowware	Exterior partially glazed. Interior glazed; Portion: Body; Colour: Brown
<b>490-210 (n=6)</b>						
240	1	Ploughzone	RWE	Hand Painted - Late Palette	Teacup	Motif is floral; Portion: Body; Colours: Black; Green
241	2	Ploughzone	RWE	Unidentified	Flatware	Exfoliated; Portion: Body; Colour: Blue
242	1	Ploughzone	RWE	Undecorated	Flatware	Exfoliated; Portion: Body
243	1	Ploughzone	Red Earthenware - Coarse	Glazed	Hollowware	Interior glazed, exterior exfoliated; Portion: Body; Colour: Brown
244	1	Ploughzone	Jackfield	Undecorated	Teapot	Almost completely exfoliated; Portion: Indeterminate
<b>490-230 (n=2)</b>						
250	1	Ploughzone	Unidentifiable	Unidentified	Flatware	Indeterminate black motif visible on surface. Exfoliated; Portion: Body; Colour: Black
251	1	Ploughzone	RWE	Undecorated	Flatware	Exfoliated; Portion: Body
<b>495-185 (n=14)</b>						
260	1	Ploughzone	RWE	Spongeware	Saucer	Portion: Rim; Colour: Blue
261	1	Ploughzone	RWE	Hand Painted - Late Palette	Teacup	Motif is floral; Portion: Body; Colours: Green; Red
262	1	Ploughzone	RWE	Hand Painted - Late Palette	Saucer	Motif is floral; Portion: Body; Colours: Green; Black
263	1	Ploughzone	RWE	Unidentified	Flatware	Exfoliated; Portion: Rim; Colour: Blue
264	2	Ploughzone	RWE	Undecorated	Flatware	Exfoliated; Portion: Body
265	3	Ploughzone	RWE	Undecorated	Indeterminate	Small exfoliated fragments; Portion: Body
266	1	Ploughzone	RWE	Undecorated	Flatware	Surface completely exfoliated; Portion: Footring
267	1	Ploughzone	Yellow Ware	Undecorated	Hollowware	Portion: Body
268	2	Ploughzone	Red Earthenware - Coarse	Glazed	Hollowware	One side glazed, other exfoliated; Portion: Body; Colour: Brown
269	1	Ploughzone	Red Earthenware - Coarse	Unidentified	Hollowware	Completely exfoliated; Portion: Body
<b>495-190 (n=22)</b>						
280	3	Ploughzone	RWE	Spongeware	Saucer	Portion: Body; Colour: Blue
281	1	Ploughzone	RWE	Spongeware	Teacup	Portion: Body; Colour: Blue
282	1	Ploughzone	RWE	Hand Painted - Late Palette	Teacup	Motif is floral; Portion: Body; Colours: Red; Blue
283	1	Ploughzone	RWE	Edgeware - Straight Unmoulded	Plate - General	Portion: Rim; Colour: Blue
284	1	Ploughzone	RWE	Edgeware - General	Flatware	Exfoliated; Portion: Rim; Colour: Blue



### Stage 3 Ceramic Inventory

Taggart Site (BaHb-19)

#### Context

Cat#	Qty	Stratum	Ware	Motif	Form	Comments
285	1	Ploughzone	Unidentifiable	Unidentified	Indeterminate	Motif appears to be floral. Small fragment. Underside completely exfoliated; Portion: Body; Colour: Blue
286	1	Ploughzone	RWE	Transfer Print - General	Flatware	Pattern is botanical on a linear background. Exfoliated; Portion: Brink; Colour: Dark Brown
287	1	Ploughzone	RWE	Undecorated	Hollowware	Double folded footring. Surface completely exfoliated; Portion: Footring
288	1	Ploughzone	Unidentifiable	Undecorated	Flatware	Surface completely exfoliated; Portion: Footring
289	1	Ploughzone	RWE	Undecorated	Flatware	Exfoliated; Portion: Brink
290	3	Ploughzone	RWE	Undecorated	Flatware	Exfoliated; Portion: Body
291	2	Ploughzone	RWE	Undecorated	Indeterminate	Small exfoliated fragments; Portion: Rim
292	5	Ploughzone	RWE	Undecorated	Indeterminate	Small exfoliated fragments; Portion: Body
<b>495-195 (n=18)</b>						
300	1	Ploughzone	RWE	Hand Painted - Late Palette	Saucer	Motif is floral. Base has impressed maker's mark: _56 // _ / _ inside a border with a roughly heraldic shape; Portion: Base; Colours: Green; Black
301	1	Ploughzone	RWE	Transfer Print - Willow Pattern	Flatware	Portion: Body; Colour: Blue
302	1	Ploughzone	RWE	Factory Slip - Banded	Hollowware	Visible motif is part of a wide grey and a blue band; Portion: Body; Colours: Grey; Blue
303	1	Ploughzone	RWE	Factory Slip - General	Hollowware	Visible motif is part of a wide band; Portion: Body; Colour: Tan
304	3	Ploughzone	RWE	Undecorated	Flatware	Exfoliated; Portion: Body
305	2	Ploughzone	RWE	Undecorated	Indeterminate	Small exfoliated fragments; Portion: Body
306	1	Ploughzone	RWE	Factory Slip - Mocha	Hollowware	Motif is dendritic design in black on grey background; Portion: Body; Colours: Black; Grey
307	1	Ploughzone	Ironstone	Transfer Print - Flow	Hollowware	Pattern is geometric. Body is also moulded. Might be a large vessel or dish; Portion: Body; Colour: Mulberry (Flow Black)
308	1	Ploughzone	Unidentifiable	Undecorated	Hollowware	Almost completely exfoliated; Portion: Footring
309	1	Ploughzone	Unidentifiable	Undecorated	Flatware	Surface completely exfoliated; Portion: Footring
310	2	Ploughzone	Yellow Ware	Undecorated	Hollowware	Exfoliated; Portion: Body
311	2	Ploughzone	Buff Earthenware	Rockingham	Hollowware	Exfoliated; Portion: Body; Colour: Brown
312	1	Ploughzone	Red Earthenware - Coarse	Glazed	Hollowware	Exfoliated; Portion: Indeterminate; Colour: Light Brown
<b>495-205 (n=22)</b>						
320	2	Ploughzone	RWE	Spongeware	Saucer	Exfoliated; Portion: Rim; Colour: Blue
321	1	Ploughzone	RWE	Spongeware	Teas	Exfoliated; Portion: Rim; Colour: Blue
322	2	Ploughzone	RWE	Spongeware	Teas	Portion: Body; Colour: Blue
323	2	Ploughzone	RWE	Transfer Print - General	Flatware	Exfoliated; Portion: Body; Colour: Blue
324	3	Ploughzone	RWE	Undecorated	Flatware	Exfoliated; Portion: Body

### Stage 3 Ceramic Inventory

Taggart Site (BaHb-19)

#### Context

Cat#	Qty	Stratum	Ware	Motif	Form	Comments
325	1	Ploughzone	Ironstone	Moulded - General	Flatware	Body is moulded. There is also a motif in purple that appears like spongeware. Exfoliated; Portion: Body; Colour: Purple
326	1	Ploughzone	Ironstone	Moulded - General	Flatware	Exfoliated; Portion: Body
327	1	Ploughzone	Ironstone	Undecorated	Teacup	Portion: Footring
328	2	Ploughzone	Ironstone	Undecorated	Flatware	Exfoliated; Portion: Body
329	4	Ploughzone	Ironstone	Undecorated	Indeterminate	Small fragments. 3 x exfoliated; Portion: Body
330	1	Ploughzone	Unidentifiable	Undecorated	Flatware	Completely exfoliated; Portion: Body
331	1	Ploughzone	Buff Earthenware	Rockingham	Hollowware	Exfoliated; Portion: Body; Colour: Brown
332	1	Ploughzone	Red Earthenware - Coarse	Glazed	Hollowware	Small rim fragment. Exterior glazed, interior exfoliated, top absent; Portion: Rim; Colour: Light Brown

#### 500-180 (n=1)

340	1	Ploughzone	RWE	Transfer Print - Willow Pattern	Flatware	Portion: Body; Colour: Blue
-----	---	------------	-----	---------------------------------	----------	-----------------------------

#### 500-185 (n=6)

350	1	Ploughzone	RWE	Transfer Print - General	Flatware	Exfoliated; Portion: Body; Colour: Blue
351	4	Ploughzone	Unidentifiable	Undecorated	Flatware	Exfoliated; Portion: Body
352	1	Ploughzone	Ironstone	Moulded - Repeating Image	Flatware	Portion: Rim

#### 500-190 (n=40)

360	1	Ploughzone	RWE	Hand Painted - Late Palette	Saucer	Visible motif is a narrow red band at rim; Portion: Rim; Colour: Red
361	1	Ploughzone	RWE	Hand Painted - Late Palette	Teacup	Motif is floral. Exfoliated; Portion: Body; Colour: Red
362	1	Ploughzone	RWE	Spongeware	Teacup	Portion: Rim; Colour: Blue
363	1	Ploughzone	RWE	Spongeware	Teas	Portion: Body; Colour: Blue
364	1	Ploughzone	RWE	Unidentified	Flatware	Exfoliated; Portion: Body; Colour: Blue
365	1	Ploughzone	RWE	Edgeware - Straight and Moulded	Plate - General	Portion: Rim; Colour: Blue
366	1	Ploughzone	RWE	Transfer Print - General	Flatware	Portion: Rim; Colour: Blue
367	1	Ploughzone	RWE	Transfer Print - General	Flatware	Visible pattern is botanical. Exfoliated; Portion: Footring; Colour: Blue
368	2	Ploughzone	RWE	Transfer Print - General	Flatware	Portion: Body; Colour: Blue
369	1	Ploughzone	RWE	Transfer Print - Willow Pattern	Flatware	Portion: Footring; Colour: Blue
370	1	Ploughzone	RWE	Transfer Print - General	Flatware	Exfoliated; Portion: Brink; Colour: Dark Brown
371	1	Ploughzone	RWE	Transfer Print - General	Flatware	Pattern is geometric and botanical on a linear background; Portion: Body; Colour: Dark Brown
372	1	Ploughzone	RWE	Transfer Print - General	Flatware	Pattern is geometric and floral; Portion: Body; Colour: Black
373	1	Ploughzone	RWE	Undecorated	Teacup	Portion: Rim
374	1	Ploughzone	RWE	Undecorated	Flatware	Exfoliated; Portion: Brink

## Stage 3 Ceramic Inventory

Taggart Site (BaHb-19)

### Context

Cat#	Qty	Stratum	Ware	Motif	Form	Comments
375	5	Ploughzone	RWE	Undecorated	Flatware	Exfoliated; Portion: Body
376	2	Ploughzone	RWE	Undecorated	Indeterminate	Small exfoliated fragments; Portion: Body
377	1	Ploughzone	Ironstone	Moulded - Repeating Image	Flatware	Portion: Rim
378	1	Ploughzone	Ironstone	Undecorated	Flatware	Footring and brink present. Thick bodied. Might be a platter; Portion: Footring
379	1	Ploughzone	Ironstone	Undecorated	Flatware	Exfoliated; Portion: Rim
380	2	Ploughzone	Ironstone	Undecorated	Flatware	Exfoliated; Portion: Body
381	7	Ploughzone	Unidentifiable	Undecorated	Indeterminate	Small exfoliated fragments; Portion: Body
382	3	Ploughzone	Yellow Ware	Undecorated	Hollowware	Exfoliated; Portion: Body
383	2	Ploughzone	Buff Earthenware	Rockingham	Hollowware	Exfoliated; Portion: Body; Colour: Brown

### 500-195 (n=17)

390	1	Ploughzone	RWE	Hand Painted - Late Palette	Teacup	Motif is floral. Bell-shaped body; Portion: Body; Colour: Green
391	2	Ploughzone	RWE	Spongeware	Saucer	Portion: Body; Colour: Blue
392	1	Ploughzone	RWE	Spongeware	Teacup	Portion: Body; Colour: Blue
393	1	Ploughzone	RWE	Stamped	Saucer	Motif is stamped floral in red. There is also a black painted line visible over the stamp; Portion: Body; Colours: Red; Black
394	1	Ploughzone	RWE	Hand Painted - Late Palette	Teas	Visible motif is a black line. Small fragment; Portion: Body; Colour: Black
395	1	Ploughzone	RWE	Transfer Print - General	Flatware	Portion: Body; Colour: Blue
396	1	Ploughzone	Unidentifiable	Undecorated	Teacup	Exfoliated; Portion: Footring
397	1	Ploughzone	Ironstone	Hand Painted - General	Teacup	Visible motif is a narrow blue band on interior. Exterior exfoliated; Portion: Rim; Colour: Blue
398	3	Ploughzone	Ironstone	Undecorated	Flatware	Exfoliated; Portion: Body
399	2	Ploughzone	Ironstone	Undecorated	Indeterminate	Small fragments; Portion: Body
400	1	Ploughzone	Unidentifiable	Undecorated	Indeterminate	Small exfoliated fragment; Portion: Body
401	2	Ploughzone	Red Earthenware - Coarse	Unidentified	Hollowware	Exterior not glazed. Interior exfoliated; Portion: Body

### 500-200 (n=52)

410	2	Ploughzone	RWE	Hand Painted - Late Palette	Saucer	Motif is floral; Portion: Body; Colours: Green; Black
411	1	Ploughzone	RWE	Hand Painted - Late Palette	Saucer	Motif is floral; Portion: Footring; Colours: Red; Green
412	4	Ploughzone	RWE	Spongeware	Teas	Portion: Body; Colour: Blue
413	1	Ploughzone	Unidentifiable	Edgware - Evenly Scalloped	Plate - General	Underside exfoliated; Portion: Rim; Colour: Blue
414	2	Ploughzone	RWE	Transfer Print - Willow Pattern	Flatware	1 x fragment pattern is part of a central narrative scene; Portion: Body; Colour: Blue
415	1	Ploughzone	RWE	Transfer Print - General	Flatware	Small fragment; Portion: Body; Colour: Dark Brown
416	1	Ploughzone	RWE	Transfer Print - General	Flatware	Rim and brink present. Rim is scalloped. Pattern is botanical on a linear background; Portion: Rim; Colour: Dark Brown

### Stage 3 Ceramic Inventory

Taggart Site (BaHb-19)

#### Context

Cat#	Qty	Stratum	Ware	Motif	Form	Comments
417	1	Ploughzone	RWE	Factory Slip - Mocha	Hollowware	Motif is dendritic design in black on grey background; Portion: Body; Colours: Black; Grey
418	1	Ploughzone	RWE	Factory Slip - Banded	Hollowware	Visible motif is a narrow black band and part of a wide tan band; Portion: Body; Colours: Black; Tan
419	1	Ploughzone	Ironstone	Moulded - Repeating Image	Indeterminate	Small fragment; Portion: Body
420	1	Ploughzone	Ironstone	Moulded - Ribbed or Panelled	Hollowware	Motif is large ribs. Thick bodied. Might be a large vessel; Portion: Rim
421	3	Ploughzone	Ironstone	Undecorated	Flatware	1 x exfoliated; Portion: Body
422	1	Ploughzone	Ironstone	Undecorated	Flatware	Portion: Footring
423	6	Ploughzone	RWE	Undecorated	Flatware	Exfoliated; Portion: Body
424	2	Ploughzone	RWE	Undecorated	Flatware	1 x exfoliated; Portion: Footring
425	7	Ploughzone	RWE	Undecorated	Indeterminate	Small exfoliated fragments; Portion: Body
426	4	Ploughzone	Unidentifiable	Undecorated	Flatware	Exfoliated; Portion: Body
427	6	Ploughzone	Unidentifiable	Undecorated	Indeterminate	Small exfoliated fragments; Portion: Body
428	1	Ploughzone	Buff Earthenware	Rockingham	Hollowware	Exfoliated; Portion: Rim; Colour: Brown
429	1	Ploughzone	Yellow Ware	Undecorated	Hollowware	Exfoliated; Portion: Rim
430	1	Ploughzone	Yellow Ware	Undecorated	Hollowware	Exfoliated; Portion: Body
431	1	Ploughzone	Red Earthenware - Coarse	Glazed	Hollowware	One side glazed, other exfoliated; Portion: Body; Colour: Light Brown
432	3	Ploughzone	Red Earthenware - Coarse	Glazed	Hollowware	One side glazed, other exfoliated; Portion: Body; Colour: Dark Brown

#### 500-210 (n=13)

440	1	Ploughzone	RWE	Transfer Print - Willow Pattern	Flatware	Pattern is part of a central narrative scene; Portion: Body; Colour: Blue
441	1	Ploughzone	RWE	Transfer Print - General	Flatware	Portion: Body; Colour: Blue
442	1	Ploughzone	RWE	Hand Painted - Late Palette	Saucer	Exfoliated; Portion: Body; Colour: Black
443	4	Ploughzone	RWE	Undecorated	Indeterminate	Small exfoliated fragments; Portion: Body
444	1	Ploughzone	Ironstone	Undecorated	Hollowware	Might be a large vessel; Portion: Footring
445	3	Ploughzone	Ironstone	Undecorated	Indeterminate	Small exfoliated fragments; Portion: Body
446	1	Ploughzone	Yellow Ware	Factory Slip - Banded	Hollowware	Visible motif is a narrow black and part of a wide white band; Portion: Body; Colours: Black; White
447	1	Ploughzone	Red Earthenware - Coarse	Unidentified	Hollowware	Exterior not glazed. Interior exfoliated; Portion: Body

#### 500-220 (n=6)

450	1	Ploughzone	RWE	Spongeware	Saucer	Portion: Body; Colour: Blue
451	1	Ploughzone	RWE	Transfer Print - General	Flatware	Pattern is floral on a geometric background; Portion: Body; Colour: Purple
452	1	Ploughzone	RWE	Factory Slip - Banded	Hollowware	Motif is two narrow black bands and part of a blue band. Carinated body; Portion: Body; Colours: Black; Blue
453	2	Ploughzone	RWE	Undecorated	Indeterminate	Small exfoliated fragments; Portion: Body

### Stage 3 Ceramic Inventory

Taggart Site (BaHb-19)

#### Context

Cat#	Qty	Stratum	Ware	Motif	Form	Comments
454	1	Ploughzone	Semi Porcelain	Decalcomania	Teacup	Motif is floral. Body also has a moulded motif, what appears to be upper portion of a scallop; Portion: Body; Colours: Pink; Green
<b>500-230 (n=2)</b>						
460	1	Ploughzone	Ironstone	Moulded - General	Hollowware	Exfoliated; Portion: Handle
461	1	Ploughzone	Red Earthenware - Coarse	Glazed	Hollowware	Both sides glazed; Portion: Body; Colour: Brown
<b>505-185 (n=13)</b>						
470	1	Ploughzone	RWE	Transfer Print - Willow Pattern	Flatware	Portion: Rim; Colour: Blue
471	1	Ploughzone	RWE	Transfer Print - General	Flatware	Pattern is floral on a linear background. Exfoliated; Portion: Body; Colour: Blue
472	1	Ploughzone	RWE	Undecorated	Teacup	Portion: Footring
473	1	Ploughzone	RWE	Undecorated	Teacup	Portion: Body
474	1	Ploughzone	RWE	Undecorated	Flatware	Exfoliated; Portion: Footring
475	2	Ploughzone	RWE	Undecorated	Flatware	Exfoliated; Portion: Body
476	1	Ploughzone	Ironstone	Undecorated	Flatware	Portion: Footring
477	1	Ploughzone	Ironstone	Undecorated	Flatware	Portion: Body
478	1	Ploughzone	Buff Earthenware	Rockingham	Hollowware	Exfoliated; Portion: Body; Colour: Brown
479	1	Ploughzone	Yellow Ware	Undecorated	Hollowware	Exfoliated; Portion: Body
480	1	Ploughzone	Red Earthenware - Coarse	Glazed	Hollowware	One side glazed, other exfoliated; Portion: Body; Colour: Light Brown
481	1	Ploughzone	Red Earthenware - Coarse	Unidentified	Hollowware	Exterior not glazed. Interior exfoliated; Portion: Body
<b>505-190 (n=18)</b>						
490	1	Ploughzone	RWE	Transfer Print - General	Flatware	Pattern is botanical on a linear background; Portion: Rim; Colour: Blue
491	1	Ploughzone	RWE	Transfer Print - Willow Pattern	Flatware	Portion: Brink; Colour: Blue
492	1	Ploughzone	Pearlware	Transfer Print - Olde Blue	Flatware	Pattern is floral. Underside exfoliated; Portion: Body; Colour: Blue
493	1	Ploughzone	RWE	Edgeware - General	Plate - General	Exfoliated; Portion: Rim; Colour: Blue
494	1	Ploughzone	RWE	Spongeware	Teacup	Exterior exfoliated. Motif extends onto interior; Portion: Rim; Colour: Blue
495	1	Ploughzone	RWE	Spongeware	Teas	Exfoliated; Portion: Body; Colour: Blue
496	1	Ploughzone	RWE	Transfer Print - General	Indeterminate	Visible pattern incorporates geometric, similar to Cat.372. One side completely exfoliated; Portion: Body; Colour: Black
497	2	Ploughzone	RWE	Undecorated	Indeterminate	1 x exfoliated; Portion: Body
498	1	Ploughzone	Ironstone	Moulded - Repeating Image	Flatware	Small fragment; Portion: Body
499	1	Ploughzone	Ironstone	Undecorated	Indeterminate	Exfoliated; Portion: Body
500	1	Ploughzone	Unidentifiable	Undecorated	Indeterminate	Small exfoliated fragment; Portion: Rim
501	1	Ploughzone	Yellow Ware	Undecorated	Hollowware	Exfoliated; Portion: Body
502	5	Ploughzone	Red Earthenware - Coarse	Glazed	Hollowware	One side glazed, other exfoliated; Portion: Body; Colour: Brown



## Stage 3 Ceramic Inventory

Taggart Site (BaHb-19)

### Context

Cat#	Qty	Stratum	Ware	Motif	Form	Comments
<b>505-195 (n=19)</b>						
510	1	Ploughzone	RWE	Hand Painted - Late Palette	Saucer	Visible motif is a narrow red band at rim. Exfoliated; Portion: Rim; Colour: Red
511	1	Ploughzone	Unidentifiable	Hand Painted - General	Teas	Motif appears to be floral. Small fragment. One side completely exfoliated; Portion: Body; Colour: Light Brown
512	1	Ploughzone	RWE	Transfer Print - Willow Pattern	Flatware	Exfoliated; Portion: Footring; Colour: Blue
513	1	Ploughzone	Unidentifiable	Transfer Print - General	Indeterminate	Small fragment. One side completely exfoliated; Portion: Body; Colour: Blue
514	1	Ploughzone	RWE	Transfer Print - General	Flatware	Pattern is botanical; Portion: Brink; Colour: Dark Brown
515	1	Ploughzone	RWE	Undecorated	Flatware	Exfoliated; Portion: Footring
516	1	Ploughzone	RWE	Factory Slip - Banded	Hollowware	Portion: Body; Colour: Blue
517	3	Ploughzone	RWE	Undecorated	Indeterminate	Small exfoliated fragments; Portion: Body
518	2	Ploughzone	Unidentifiable	Undecorated	Indeterminate	Small exfoliated fragments; Portion: Body
519	1	Ploughzone	Ironstone	Moulded - General	Flatware	Body is moulded. There is also a motif in purple that appears like spongeware. Exfoliated; Portion: Body; Colour: Purple
520	1	Ploughzone	Ironstone	Moulded - General	Indeterminate	Small fragment; Portion: Rim
521	1	Ploughzone	Buff Earthenware	Rockingham	Hollowware	Exfoliated; Portion: Body; Colour: Brown
522	1	Ploughzone	Yellow Ware	Undecorated	Hollowware	Exfoliated; Portion: Body
523	2	Ploughzone	Red Earthenware - Coarse	Glazed	Hollowware	1 x fragment both sides glazed. 1 x one side glazed, other exfoliated; Portion: Body; Colour: Brown
524	1	Ploughzone	Jackfield	Undecorated	Teapot	Small exfoliated fragment; Portion: Body
<b>505-200 (n=43)</b>						
530	3	Ploughzone	RWE	Hand Painted - Late Palette	Saucer	Motif is floral. 1 x fragment in red, black, blue, green. 1 x in black, blue, green. 1 x in red; Portion: Body; True
531	3	Ploughzone	RWE	Spongeware	Saucer	Portion: Body; Colour: Blue
532	2	Ploughzone	RWE	Spongeware	Teacup	Portion: Body; Colour: Blue
533	2	Ploughzone	RWE	Spongeware	Teas	Portion: Body; Colour: Blue
534	1	Ploughzone	RWE	Transfer Print - Willow Pattern	Flatware	Portion: Body; Colour: Blue
535	3	Ploughzone	RWE	Transfer Print - General	Flatware	Exfoliated; Portion: Body; Colour: Dark Brown
536	1	Ploughzone	RWE	Unidentified	Flatware	Exfoliated; Portion: Body; Colour: Blue
537	1	Ploughzone	RWE	Unidentified	Flatware	Exfoliated; Portion: Footring; Colour: Blue
538	3	Ploughzone	RWE	Undecorated	Flatware	Exfoliated; Portion: Footring
539	3	Ploughzone	RWE	Undecorated	Flatware	Exfoliated; Portion: Body
540	1	Ploughzone	RWE	Stamped	Saucer	Motif is stamped rows of chevrons with a painted narrow band at rim; Portion: Rim; Colour: Blue
541	1	Ploughzone	Ironstone	Transfer Print - Flow	Flatware	Portion: Body; Colour: Blue

### Stage 3 Ceramic Inventory

Taggart Site (BaHb-19)

#### Context

Cat#	Qty	Stratum	Ware	Motif	Form	Comments
542	1	Ploughzone	Ironstone	Undecorated	Saucer	Portion: Rim
543	1	Ploughzone	Ironstone	Undecorated	Flatware	Exfoliated; Portion: Footring
544	2	Ploughzone	Ironstone	Undecorated	Indeterminate	Exfoliated; Portion: Footring
545	4	Ploughzone	Ironstone	Undecorated	Flatware	Exfoliated; Portion: Body
546	1	Ploughzone	Ironstone	Undecorated	Indeterminate	Exfoliated; Portion: Body
547	4	Ploughzone	Unidentifiable	Undecorated	Indeterminate	Small exfoliated fragments; Portion: Body
548	2	Ploughzone	Buff Earthenware	Rockingham	Hollowware	Exfoliated; Portion: Body; Colour: Brown
549	1	Ploughzone	Yellow Ware	Undecorated	Hollowware	Exfoliated; Portion: Body
550	2	Ploughzone	Red Earthenware - Coarse	Glazed	Hollowware	One side glazed, other exfoliated; Portion: Body; Colour: Brown
551	1	Ploughzone	Red Earthenware - Coarse	Glazed	Hollowware	Exterior partially glazed. Interior exfoliated; Portion: Body; Colour: Brown

#### 505-205 (n=46)

560	2	Ploughzone	RWE	Hand Painted - Late Palette	Saucer	Motif is floral; Portion: Body; Colour: Green
561	2	Ploughzone	RWE	Spongeware	Saucer	Exfoliated; Portion: Rim; Colour: Blue
562	1	Ploughzone	RWE	Spongeware	Teas	Portion: Body; Colour: Blue
563	1	Ploughzone	RWE	Transfer Print - Willow Pattern	Flatware	Portion: Body; Colour: Blue
564	1	Ploughzone	RWE	Transfer Print - General	Flatware	Visible pattern is a 'scroll like' botanical and might be a Sheet Pattern; Portion: Rim; Colour: Blue
565	1	Ploughzone	RWE	Transfer Print - General	Flatware	Portion: Body; Colour: Dark Brown
566	1	Ploughzone	RWE	Edgware - Straight and Moulded	Plate - General	Exfoliated; Portion: Rim; Colour: Blue
567	1	Ploughzone	RWE	Unidentified	Flatware	Exfoliated; Portion: Body; Colour: Blue
568	1	Ploughzone	RWE	Unidentified	Flatware	Exfoliated; Portion: Footring; Colour: Blue
569	1	Ploughzone	Unidentifiable	Transfer Print - General	Flatware	Thermally altered. Exfoliated; Portion: Body; Colour: Unidentified
570	1	Ploughzone	RWE	Factory Slip - General	Hollowware	Portion: Body; Colour: Tan
571	1	Ploughzone	RWE	Undecorated	Flatware	Exfoliated; Portion: Rim
572	1	Ploughzone	RWE	Undecorated	Teacup	Exfoliated; Portion: Footring
573	5	Ploughzone	RWE	Undecorated	Flatware	Exfoliated; Portion: Body
574	8	Ploughzone	RWE	Undecorated	Indeterminate	Small exfoliated fragments; Portion: Body
575	6	Ploughzone	Unidentifiable	Undecorated	Indeterminate	Small exfoliated fragments; Portion: Body
576	1	Ploughzone	Ironstone	Undecorated	Teacup	Exterior completely exfoliated; Portion: Rim
577	1	Ploughzone	Ironstone	Undecorated	Flatware	Exfoliated; Portion: Rim
578	4	Ploughzone	Ironstone	Undecorated	Flatware	Exfoliated; Portion: Body
579	1	Ploughzone	Ironstone	Undecorated	Indeterminate	Small exfoliated fragment; Portion: Rim
580	1	Ploughzone	Ironstone	Undecorated	Indeterminate	Small exfoliated fragment; Portion: Body

### Stage 3 Ceramic Inventory

Taggart Site (BaHb-19)

#### Context

Cat#	Qty	Stratum	Ware	Motif	Form	Comments
581	1	Ploughzone	Yellow Ware	Factory Slip - Mocha	Hollowware	Portion: Body; Colours: Blue; White
582	1	Ploughzone	Yellow Ware	Undecorated	Hollowware	Exfoliated; Portion: Body
583	1	Ploughzone	Red Earthenware - Coarse	Glazed	Hollowware	One side glazed, other exfoliated; Portion: Body; Colour: Light Brown
584	1	Ploughzone	Jackfield	Undecorated	Teapot	Exfoliated; Portion: Body
<b>505-210 (n=33)</b>						
590	1	Ploughzone	RWE	Hand Painted - Late Palette	Teacup	Motif is a narrow red band at rim on both sides. Exterior also floral in black and green. Exfoliated; Portion: Rim; True
591	1	Ploughzone	RWE	Spongeware	Teacup	Motif extends onto interior; Portion: Rim; Colour: Blue
592	1	Ploughzone	RWE	Transfer Print - Willow Pattern	Flatware	Portion: Body; Colour: Blue
593	1	Ploughzone	RWE	Transfer Print - General	Flatware	Visible motif is repeating wavy lines. Exfoliated; Portion: Rim; Colour: Blue
594	1	Ploughzone	RWE	Transfer Print - General	Flatware	Pattern appears to be botanical on a geometric background. Small fragment. Underside completely exfoliated; Portion: Body; Colour: Purple
595	1	Ploughzone	RWE	Edgeware - Straight Unmoulded	Plate - Table	Portion: Rim; Colour: Blue
596	1	Ploughzone	RWE	Unidentified	Flatware	Exfoliated. Rim edge has blue glaze - motif is likely Edgeware; Portion: Rim; Colour: Blue
597	1	Ploughzone	RWE	Stamped	Saucer	Exfoliated; Portion: Rim; Colour: Blue
598	1	Ploughzone	Ironstone	Undecorated	Teacup	Portion: Rim
599	1	Ploughzone	Ironstone	Moulded - General	Teacup	Moulded band at rim. Small fragment; Portion: Rim
600	1	Ploughzone	Ironstone	Undecorated	Hollowware	Interior completely exfoliated; Portion: Rim
601	1	Ploughzone	Ironstone	Unidentified	Teacup	Exfoliated. Motif might be ribbed; Portion: Body
602	1	Ploughzone	RWE	Undecorated	Teacup	Portion: Footring
603	1	Ploughzone	RWE	Undecorated	Hollowware	Double folded footring. Exfoliated; Portion: Footring
604	1	Ploughzone	Unidentifiable	Undecorated	Teacup	Exfoliated; Portion: Footring
605	1	Ploughzone	Unidentifiable	Undecorated	Indeterminate	Small exfoliated fragment; Portion: Footring
606	3	Ploughzone	Ironstone	Undecorated	Flatware	Exfoliated; Portion: Body
607	4	Ploughzone	Ironstone	Undecorated	Indeterminate	Small exfoliated fragments; Portion: Body
608	3	Ploughzone	RWE	Undecorated	Indeterminate	Small exfoliated fragments; Portion: Body
609	5	Ploughzone	Unidentifiable	Undecorated	Indeterminate	Small exfoliated fragments; Portion: Body
610	2	Ploughzone	Yellow Ware	Undecorated	Hollowware	Exfoliated; Portion: Body
<b>505-215 (n=14)</b>						
620	1	Ploughzone	RWE	Stamped	Teacup	Small fragment. Might be part of Cat.140; Portion: Rim; Colour: Red
621	1	Ploughzone	RWE	Edgeware - Straight Unmoulded	Plate - General	Exfoliated; Portion: Rim; Colour: Blue

## Stage 3 Ceramic Inventory

Taggart Site (BaHb-19)

### Context

Cat#	Qty	Stratum	Ware	Motif	Form	Comments
622	1	Ploughzone	RWE	Transfer Print - Willow Pattern	Flatware	Portion: Body; Colour: Blue
623	1	Ploughzone	RWE	Factory Slip - Banded	Hollowware	Visible motif is narrow blue bands and part of a wide tan band; Portion: Body; Colours: Blue; Tan
624	3	Ploughzone	RWE	Undecorated	Flatware	Exfoliated; Portion: Body
625	1	Ploughzone	RWE	Undecorated	Teacup	Exfoliated; Portion: Footring
626	1	Ploughzone	RWE	Undecorated	Teacup	Exfoliated; Portion: Body
627	1	Ploughzone	Unidentifiable	Undecorated	Indeterminate	Small exfoliated fragment; Portion: Rim
628	1	Ploughzone	Unidentifiable	Undecorated	Indeterminate	Small exfoliated fragment; Portion: Body
629	1	Ploughzone	RWE	Undecorated	Flatware	Exfoliated; Portion: Rim
630	1	Ploughzone	Yellow Ware	Undecorated	Hollowware	Exfoliated; Portion: Body
631	1	Ploughzone	Red Earthenware - Coarse	Glazed	Hollowware	One side glazed, other exfoliated; Portion: Body; Colour: Light Brown
<b>510-170 (n=2)</b>						
640	1	Ploughzone	RWE	Unidentified	Flatware	Exfoliated; Portion: Body; Colour: Blue
641	1	Ploughzone	Red Earthenware - Coarse	Glazed	Hollowware	One side glazed, other exfoliated; Portion: Body; Colour: Dark Brown
<b>510-180 (n=5)</b>						
650	1	Ploughzone	RWE	Unidentified	Indeterminate	Small exfoliated fragment; Portion: Rim; Colour: Blue
651	1	Ploughzone	Yellow Ware	Undecorated	Hollowware	Exfoliated; Portion: Rim
652	1	Ploughzone	Red Earthenware - Coarse	Glazed	Hollowware	One side glazed, other exfoliated; Portion: Body; Colour: Light Brown
653	2	Ploughzone	Red Earthenware - Coarse	Glazed	Hollowware	One side glazed, other exfoliated; Portion: Body; Colour: Dark Brown
<b>510-190 (n=37)</b>						
660	1	Ploughzone	RWE	Hand Painted - Late Palette	Saucer	Motif is floral; Portion: Body; Colour: Green
661	1	Ploughzone	RWE	Hand Painted - Late Palette	Teacup	Motif is floral; Portion: Body; Colour: Green
662	2	Ploughzone	RWE	Spongeware	Saucer	Exfoliated; Portion: Rim; Colour: Blue
663	1	Ploughzone	RWE	Spongeware	Teacup	Portion: Body; Colour: Blue
664	2	Ploughzone	RWE	Transfer Print - Willow Pattern	Flatware	1 x fragment is part of a central narrative scene; Portion: Body; Colour: Blue
665	1	Ploughzone	RWE	Transfer Print - General	Flatware	Pattern is botanical on a linear background; Portion: Body; Colour: Dark Brown
666	1	Ploughzone	RWE	Undecorated	Teacup	Portion: Footring
667	1	Ploughzone	RWE	Undecorated	Flatware	Exfoliated; Portion: Rim
668	1	Ploughzone	RWE	Undecorated	Flatware	Exfoliated; Portion: Footring
669	6	Ploughzone	RWE	Undecorated	Flatware	Exfoliated; Portion: Body
670	7	Ploughzone	RWE	Undecorated	Indeterminate	Small exfoliated fragments; Portion: Body
671	1	Ploughzone	Ironstone	Undecorated	Flatware	Exfoliated; Portion: Body
672	2	Ploughzone	Ironstone	Undecorated	Indeterminate	Small exfoliated fragments; Portion: Body

## Stage 3 Ceramic Inventory

Taggart Site (BaHb-19)

### Context

Cat#	Qty	Stratum	Ware	Motif	Form	Comments
673	1	Ploughzone	Buff Earthenware	Rockingham	Hollowware	Small exfoliated fragment; Portion: Body; Colour: Brown
674	3	Ploughzone	Yellow Ware	Undecorated	Hollowware	Small exfoliated fragments; Portion: Body
675	1	Ploughzone	Red Earthenware - Coarse	Glazed	Hollowware	Rim exterior glazed, top absent, interior exfoliated. Small fragment; Portion: Rim; Colour: Brown
676	5	Ploughzone	Red Earthenware - Coarse	Glazed	Hollowware	One side glazed, other exfoliated; Portion: Body; Colour: Brown

### 510-200 (n=48)

680	1	Ploughzone	RWE	Spongeware	Saucer	Portion: Rim; Colour: Blue
681	1	Ploughzone	RWE	Spongeware	Saucer	Portion: Body; Colour: Blue
682	1	Ploughzone	RWE	Spongeware	Teacup	Portion: Body; Colour: Blue
683	1	Ploughzone	RWE	Hand Painted - Late Palette	Teacup	Motif is floral; Portion: Rim; Colour: Red
684	1	Ploughzone	RWE	Hand Painted - Late Palette	Teacup	Motif is floral; Portion: Body; True
685	1	Ploughzone	RWE	Hand Painted - Late Palette	Teas	Motif is floral; Portion: Body; Colour: Red
686	1	Ploughzone	RWE	Transfer Print - Willow Pattern	Flatware	Portion: Body; Colour: Blue
687	1	Ploughzone	RWE	Transfer Print - General	Teacup	Visible pattern is floral; Portion: Body; Colour: Black
688	1	Ploughzone	RWE	Transfer Print - General	Flatware	Visible pattern is floral; Portion: Rim; Colour: Dark Brown
689	3	Ploughzone	RWE	Undecorated	Flatware	Exfoliated; Portion: Body
690	3	Ploughzone	RWE	Undecorated	Indeterminate	Small exfoliated fragments; Portion: Body
691	2	Ploughzone	Ironstone	Transfer Print - Flow	Flatware	Exfoliated; Portion: Body; Colour: Blue
692	1	Ploughzone	Ironstone	Moulded - Wheatware	Flatware	Portion: Rim
693	1	Ploughzone	RWE	Unidentified	Flatware	Exfoliated; Portion: Body; Colour: Purple
694	4	Ploughzone	Ironstone	Undecorated	Flatware	Exfoliated; Portion: Body
695	1	Ploughzone	Unidentifiable	Undecorated	Indeterminate	One side completely exfoliated; Portion: Body
696	6	Ploughzone	Unidentifiable	Undecorated	Indeterminate	Small exfoliated fragments; Portion: Body
697	2	Ploughzone	Buff Earthenware	Rockingham	Hollowware	Exfoliated; Portion: Body; Colour: Brown
698	1	Ploughzone	Yellow Ware	Factory Slip - Banded	Hollowware	Visible motif is narrow white bands; Portion: Body; Colour: White
699	1	Ploughzone	Yellow Ware	Undecorated	Hollowware	Exfoliated; Portion: Body
700	14	Ploughzone	Red Earthenware - Coarse	Glazed	Hollowware	1 x fragment both sides glazed. 13 x one side glazed, other exfoliated; Portion: Body; Colour: Brown

### 510-205 (n=65)

710	1	Ploughzone	RWE	Hand Painted - Late Palette	Teacup	Motif is likely floral; Portion: Rim; Colour: Blue
711	1	Ploughzone	RWE	Hand Painted - Late Palette	Teacup	Motif is floral; Portion: Body; Colours: Black; Green
712	1	Ploughzone	RWE	Spongeware	Teacup	Portion: Body; Colour: Blue
713	4	Ploughzone	RWE	Spongeware	Saucer	Portion: Body; Colour: Blue



### Stage 3 Ceramic Inventory

Taggart Site (BaHb-19)

#### Context

Cat#	Qty	Stratum	Ware	Motif	Form	Comments
714	1	Ploughzone	RWE	Edgeware - Straight Unmoulded	Plate - General	Portion: Rim; Colour: Blue
715	1	Ploughzone	RWE	Unidentified	Flatware	Surface completely exfoliated, blue glaze along rim edge, might be Edgeware; Portion: Rim; Colour: Blue
716	1	Ploughzone	RWE	Transfer Print - Willow Pattern	Flatware	Portion: Rim; Colour: Blue
717	1	Ploughzone	RWE	Transfer Print - General	Flatware	Pattern is botanical on a linear background; Portion: Brink; Colour: Blue
718	1	Ploughzone	RWE	Transfer Print - General	Flatware	Visible pattern is botanical; Portion: Brink; Colour: Blue
719	2	Ploughzone	RWE	Transfer Print - General	Flatware	Exfoliated; Portion: Rim; Colour: Blue
720	3	Ploughzone	RWE	Transfer Print - General	Flatware	Exfoliated. 2 x fragments pattern likely part of a narrative scene; Portion: Body; Colour: Dark Brown
721	1	Ploughzone	RWE	Transfer Print - General	Flatware	Visible pattern is geometric. Rim is scalloped; Portion: Rim; Colour: Purple
722	1	Ploughzone	RWE	Transfer Print - General	Flatware	1 x fragment is botanical on geometric background. 1 x is botanical; Portion: Body; Colour: Purple
723	1	Ploughzone	RWE	Transfer Print - General	Flatware	Pattern might be part of a narrative scene, what appears to be a bird and a ribbon visible. Rather than surface pattern, this might be part of a decorative pattern name on base. One side completely exfoliated; Portion: Indeterminate; Colour: Blue
724	1	Ploughzone	RWE	Factory Slip - General	Hollowware	Portion: Body; Colour: Blue
725	1	Ploughzone	RWE	Unidentified	Indeterminate	Portion: Body; Colour: Blue
726	1	Ploughzone	RWE	Undecorated	Indeterminate	Base has indeterminate impressed maker's mark. Surface completely exfoliated; Portion: Base
727	1	Ploughzone	RWE	Undecorated	Indeterminate	Small exfoliated fragment; Portion: Footring
728	9	Ploughzone	RWE	Undecorated	Flatware	Exfoliated; Portion: Body
729	12	Ploughzone	RWE	Undecorated	Indeterminate	Small exfoliated fragments; Portion: Body
730	2	Ploughzone	Unidentifiable	Undecorated	Indeterminate	Exfoliated; Portion: Rim
731	1	Ploughzone	Unidentifiable	Undecorated	Hollowware	Exfoliated; Portion: Footring
732	2	Ploughzone	Ironstone	Moulded - General	Flatware	Body is moulded. There is also a motif in purple that appears like spongeware; Portion: Body; Colour: Purple
733	1	Ploughzone	Ironstone	Undecorated	Saucer	Portion: Rim
734	2	Ploughzone	Ironstone	Undecorated	Teacup	Exfoliated; Portion: Rim
735	4	Ploughzone	Ironstone	Undecorated	Teacup	Portion: Body
736	3	Ploughzone	Ironstone	Undecorated	Flatware	Exfoliated; Portion: Body
737	1	Ploughzone	Yellow Ware	Moulded - General	Hollowware	Portion: Rim
738	1	Ploughzone	Yellow Ware	Undecorated	Hollowware	Exfoliated; Portion: Body
739	3	Ploughzone	Red Earthenware - Coarse	Glazed	Hollowware	One side glazed, other exfoliated; Portion: Body; Colour: Brown

510-210 (n=99)

### Stage 3 Ceramic Inventory

Taggart Site (BaHb-19)

#### Context

Cat#	Qty	Stratum	Ware	Motif	Form	Comments
750	3	Ploughzone	RWE	Hand Painted - Late Palette	Saucer	Motif is floral. 1 x fragment in red, blue. 1 x in black, green. 1 x in red; Portion: Body; True
751	1	Ploughzone	RWE	Spongeware	Saucer	Portion: Body; Colour: Blue
752	1	Ploughzone	RWE	Spongeware	Saucer	Portion: Footring; Colour: Blue
753	1	Ploughzone	RWE	Transfer Print - Willow Pattern	Flatware	Portion: Rim; Colour: Blue
754	1	Ploughzone	RWE	Transfer Print - Willow Pattern	Flatware	Portion: Brink; Colour: Blue
755	1	Ploughzone	RWE	Transfer Print - General	Flatware	Exfoliated; Portion: Brink; Colour: Blue
756	3	Ploughzone	RWE	Transfer Print - General	Flatware	Portion: Body; Colour: Blue
757	2	Ploughzone	RWE	Transfer Print - General	Indeterminate	Portion: Body; Colour: Blue
758	1	Ploughzone	RWE	Unidentified	Flatware	Exfoliated; Portion: Body; Colour: Blue
759	1	Ploughzone	Unidentifiable	Unidentified	Indeterminate	Thermally altered; Portion: Body; Colour: Green
760	1	Ploughzone	RWE	Transfer Print - General	Flatware	Pattern is geometric and floral; Portion: Rim; Colour: Purple
761	1	Ploughzone	RWE	Edgeware - Straight and Moulded	Plate - Twiffler	Portion: Rim; Colour: Blue
762	1	Ploughzone	Ironstone	Transfer Print - Flow	Hollowware	Portion: Body; Colour: Blue
763	1	Ploughzone	Ironstone	Moulded - General	Indeterminate	Motif is moulded and there is a narrow painted black band; Portion: Indeterminate; Colour: Black
764	1	Ploughzone	RWE	Unidentified	Indeterminate	Exfoliated; Portion: Rim; Colour: Blue
765	3	Ploughzone	RWE	Undecorated	Indeterminate	Exfoliated; Portion: Rim
766	2	Ploughzone	RWE	Undecorated	Teacup	Exfoliated; Portion: Footring
767	1	Ploughzone	RWE	Undecorated	Flatware	Portion: Footring
768	9	Ploughzone	RWE	Undecorated	Flatware	Exfoliated; Portion: Body
769	13	Ploughzone	RWE	Undecorated	Indeterminate	Small exfoliated fragments; Portion: Body
770	17	Ploughzone	Unidentifiable	Undecorated	Indeterminate	Small exfoliated fragments; Portion: Body
771	1	Ploughzone	Unidentifiable	Undecorated	Indeterminate	Small exfoliated fragment; Portion: Rim
772	1	Ploughzone	Unidentifiable	Undecorated	Indeterminate	Small exfoliated fragment; Portion: Footring
773	3	Ploughzone	Ironstone	Undecorated	Hollowware	Exfoliated; Portion: Footring
774	1	Ploughzone	Ironstone	Moulded - Repeating Image	Flatware	Exfoliated; Portion: Rim
775	1	Ploughzone	Ironstone	Moulded - General	Flatware	Exfoliated; Portion: Rim
776	1	Ploughzone	Ironstone	Moulded - General	Flatware	Exfoliated; Portion: Body
777	1	Ploughzone	Ironstone	Moulded - Ribbed or Panelled	Hollowware	Motif is ribbed; Portion: Body
778	2	Ploughzone	Ironstone	Undecorated	Hollowware	Exfoliated; Portion: Footring
779	2	Ploughzone	Ironstone	Undecorated	Flatware	Exfoliated; Portion: Body
780	4	Ploughzone	Ironstone	Undecorated	Indeterminate	Exfoliated; Portion: Body

## Stage 3 Ceramic Inventory

Taggart Site (BaHb-19)

### Context

Cat#	Qty	Stratum	Ware	Motif	Form	Comments
781	2	Ploughzone	Buff Earthenware	Rockingham	Hollowware	Exfoliated; Portion: Body; Colour: Brown
782	1	Ploughzone	Yellow Ware	Factory Slip - Banded	Hollowware	Visible motif is a narrow blue band and part of a white band; Portion: Body; Colours: Blue; White
783	1	Ploughzone	Yellow Ware	Undecorated	Hollowware	Exfoliated; Portion: Body
784	5	Ploughzone	Red Earthenware - Coarse	Glazed	Hollowware	1 x fragment both sides glazed. 4 x one side glazed, other exfoliated; Portion: Body; Colour: Brown
785	8	Ploughzone	Red Earthenware - Coarse	Glazed	Hollowware	1 x fragment both sides glazed. 7 x one side glazed, other exfoliated; Portion: Body; Colour: Dark Brown
<b>510-215 (n=45)</b>						
790	1	Ploughzone	RWE	Hand Painted - Late Palette	Teas	Visible motif is a narrow black band at rim; Portion: Rim; Colour: Black
791	1	Ploughzone	RWE	Spongeware	Saucer	Portion: Body; Colour: Blue
792	1	Ploughzone	RWE	Transfer Print - General	Flatware	Portion: Rim; Colour: Blue
793	1	Ploughzone	RWE	Transfer Print - General	Flatware	Visible pattern is geometric. Rim is scalloped. Exfoliated; Portion: Rim; Colour: Purple
794	1	Ploughzone	RWE	Transfer Print - General	Flatware	Visible pattern is geometric; Portion: Brink; Colour: Purple
795	1	Ploughzone	RWE	Edgeware - Evenly Scalloped	Plate - General	Portion: Rim; Colour: Blue
796	1	Ploughzone	RWE	Transfer Print - General	Flatware	Exfoliated; Portion: Footring; Colour: Purple
797	1	Ploughzone	RWE	Undecorated	Flatware	Exfoliated; Portion: Rim
798	5	Ploughzone	RWE	Undecorated	Indeterminate	Exfoliated; Portion: Body
799	6	Ploughzone	Unidentifiable	Undecorated	Indeterminate	Small exfoliated fragments; Portion: Body
800	1	Ploughzone	Unidentifiable	Undecorated	Indeterminate	Exfoliated; Portion: Footring
801	2	Ploughzone	Ironstone	Undecorated	Teacup	Portion: Footring
802	2	Ploughzone	Ironstone	Undecorated	Teacup	Body might be ribbed; Portion: Body
803	1	Ploughzone	Ironstone	Undecorated	Teacup	Exfoliated; Portion: Rim
804	1	Ploughzone	Ironstone	Undecorated	Flatware	Exfoliated; Portion: Rim
805	3	Ploughzone	Ironstone	Undecorated	Flatware	2 x fragments exfoliated; Portion: Body
806	3	Ploughzone	Ironstone	Undecorated	Indeterminate	Small exfoliated fragments; Portion: Body
807	1	Ploughzone	Buff Earthenware	Rockingham	Hollowware	Exfoliated; Portion: Body; Colour: Brown
808	2	Ploughzone	Yellow Ware	Undecorated	Hollowware	Exfoliated; Portion: Body
809	1	Ploughzone	Yellow Ware	Undecorated	Hollowware	Exfoliated; Portion: Body
810	1	Ploughzone	Stoneware - Coarse	Salt-glazed	Hollowware	Exterior salt-glazed. Interior slipped; Portion: Body; Colour: Brown
811	5	Ploughzone	Red Earthenware - Coarse	Glazed	Hollowware	1 x fragment both sides glazed. 4 x one side glazed, other exfoliated; Portion: Body; Colour: Brown
812	1	Ploughzone	Red Earthenware - Coarse	Glazed	Cream Pot	Single ribbed rim. Body widest at shoulder. Rim and both sides of body glazed; Portion: Rim; Colour: Brown
813	1	Ploughzone	Red Earthenware - Coarse	Glazed	Hollowware	Base glazed. Interior exfoliated; Portion: Base; Colour: Brown

## Stage 3 Ceramic Inventory

Taggart Site (BaHb-19)

### Context

Cat#	Qty	Stratum	Ware	Motif	Form	Comments
814	1	Ploughzone	Jackfield	Undecorated	Teapot	Small exfoliated fragment; Portion: Body
<b>510-220 (n=11)</b>						
820	1	Ploughzone	RWE	Hand Painted - Late Palette	Saucer	Motif is floral; Portion: Body; True
821	1	Ploughzone	RWE	Transfer Print - General	Flatware	Exfoliated; Portion: Footring; Colour: Blue
822	1	Ploughzone	RWE	Transfer Print - General	Plate - Table	Pattern is botanical; Portion: Rim; Colour: Blue
823	1	Ploughzone	RWE	Undecorated	Flatware	Exfoliated; Portion: Rim
824	3	Ploughzone	RWE	Undecorated	Flatware	Exfoliated; Portion: Body
825	1	Ploughzone	Unidentifiable	Undecorated	Flatware	Small exfoliated fragment; Portion: Footring
826	1	Ploughzone	Buff Earthenware	Rockingham	Hollowware	Exfoliated; Portion: Body; Colour: Brown
827	1	Ploughzone	Red Earthenware - Coarse	Glazed	Hollowware	Both sides glazed; Portion: Body; Colour: Light Brown
828	1	Ploughzone	Red Earthenware - Coarse	Glazed	Hollowware	One side glazed, other exfoliated; Portion: Body; Colour: Brown
<b>510-230 (n=1)</b>						
830	1	Ploughzone	RWE	Transfer Print - General	Flatware	Pattern is a central narrative scene that incorporates architecture. Base has a mark, also printed in purple, part of a banner visible, might be a pattern name. Exfoliated; Portion: Base; Colour: Purple
<b>515-205 (n=58)</b>						
840	1	Ploughzone	RWE	Hand Painted - Late Palette	Saucer	Motif is a narrow blue band at rim. Below this a wide red band with floral in black applied on top; Portion: Rim; True
841	1	Ploughzone	RWE	Hand Painted - Late Palette	Saucer	Motif is a narrow blue band, likely at rim. Below this a wide red band with floral in black applied on top; Portion: Body; True
842	4	Ploughzone	RWE	Hand Painted - Late Palette	Saucer	Motif is floral. 1 x fragment in black, blue, green. 1 x in black, blue. 1 x in red. 1 x in green; Portion: Body; True
843	1	Ploughzone	RWE	Spongeware	Teas	Portion: Rim; Colour: Blue
844	1	Ploughzone	RWE	Spongeware	Teas	Portion: Body; Colour: Blue
845	1	Ploughzone	RWE	Transfer Print - General	Flatware	Pattern is botanical; Portion: Rim; Colour: Blue
846	1	Ploughzone	RWE	Transfer Print - General	Flatware	Exfoliated. Pattern might be a Chinese Motif; Portion: Rim; Colour: Blue
847	1	Ploughzone	RWE	Transfer Print - Willow Pattern	Flatware	Portion: Body; Colour: Blue
848	1	Ploughzone	RWE	Transfer Print - General	Flatware	Visible pattern is botanical; Portion: Brink; Colour: Blue
849	1	Ploughzone	RWE	Unidentified	Flatware	Small exfoliated fragment. Blue glaze visible along rim edge; Portion: Rim; Colour: Blue
850	2	Ploughzone	RWE	Transfer Print - General	Flatware	Pattern is geometric; Portion: Body; Colour: Purple
851	1	Ploughzone	RWE	Transfer Print - General	Flatware	Pattern is a central narrative scene that incorporates architecture. Underside completely exfoliated; Portion: Base; Colour: Purple
852	2	Ploughzone	RWE	Transfer Print - General	Flatware	Pattern is part of a narrative scene. Exfoliated; Portion: Brink; Colour: Dark Brown
853	1	Ploughzone	RWE	Transfer Print - General	Flatware	Pattern is geometric; Portion: Body; Colour: Dark Brown

### Stage 3 Ceramic Inventory

Taggart Site (BaHb-19)

#### Context

Cat#	Qty	Stratum	Ware	Motif	Form	Comments
854	2	Ploughzone	RWE	Undecorated	Flatware	Exfoliated; Portion: Footring
855	2	Ploughzone	RWE	Undecorated	Flatware	Exfoliated; Portion: Brink
856	4	Ploughzone	RWE	Undecorated	Flatware	Exfoliated; Portion: Body
857	9	Ploughzone	RWE	Undecorated	Indeterminate	Small exfoliated fragments; Portion: Body
858	3	Ploughzone	Unidentifiable	Undecorated	Indeterminate	Small exfoliated fragments; Portion: Body
859	1	Ploughzone	Ironstone	Moulded - General	Flatware	Exfoliated; Portion: Rim
860	1	Ploughzone	Ironstone	Moulded - General	Hollowware	Exfoliated; Portion: Footring
861	1	Ploughzone	Ironstone	Undecorated	Indeterminate	Exfoliated; Portion: Rim
862	1	Ploughzone	Ironstone	Undecorated	Saucer	Portion: Footring
863	2	Ploughzone	Ironstone	Undecorated	Flatware	Exfoliated; Portion: Body
864	2	Ploughzone	Buff Earthenware	Rockingham	Hollowware	Exfoliated; Portion: Rim; Colour: Brown
865	1	Ploughzone	Yellow Ware	Factory Slip - Banded	Hollowware	Portion: Body; Colours: White; Blue
866	6	Ploughzone	Red Earthenware - Coarse	Glazed	Hollowware	One side glazed, other exfoliated; Portion: Body; Colour: Brown
867	1	Ploughzone	Red Earthenware - Coarse	Glazed	Hollowware	Both sides glazed; Portion: Body; Colour: Dark Brown
868	1	Ploughzone	Red Earthenware - Coarse	Unidentified	Hollowware	Exterior not glazed. Interior exfoliated; Portion: Body
869	2	Ploughzone	Red Earthenware - Coarse	Glazed	Hollowware	Small rim fragments. Exfoliated; Portion: Rim; Colour: Brown
<b>515-210 (n=84)</b>						
880	2	Ploughzone	RWE	Hand Painted - Late Palette	Saucer	Motif is floral. 1 x fragment in blue, 1 x in red; Portion: Body; Colours: Red; Blue
881	1	Ploughzone	RWE	Spongeware	Teacup	Portion: Rim; Colour: Blue
882	1	Ploughzone	RWE	Spongeware	Saucer	Portion: Rim; Colour: Blue
883	3	Ploughzone	RWE	Transfer Print - General	Flatware	Portion: Body; Colour: Purple
884	3	Ploughzone	RWE	Transfer Print - General	Flatware	1 x fragment pattern is part of a central narrative scene. Exfoliated; Portion: Body; Colour: Blue
885	1	Ploughzone	RWE	Transfer Print - General	Flatware	Exfoliated; Portion: Rim; Colour: Blue
886	1	Ploughzone	RWE	Transfer Print - General	Flatware	Portion: Footring; Colour: Dark Brown
887	1	Ploughzone	RWE	Edgeware - Straight Unmoulded	Plate - General	Portion: Rim; Colour: Blue
888	1	Ploughzone	RWE	Undecorated	Indeterminate	Base has maker's mark printed in purple that appears to include a Royal British Coat of Arms, a seated unicorn on right of shield is visible; Portion: Base; Colour: Purple
889	1	Ploughzone	RWE	Transfer Print - General	Teacup	Pattern on both sides, interior is geometric, exterior exfoliated; Portion: Rim; Colour: Blue
890	1	Ploughzone	RWE	Transfer Print - General	Teacup	Portion: Body; Colour: Black
891	1	Ploughzone	RWE	Factory Slip - Banded	Hollowware	Visible motif is two narrow black bands. Body is carinated; Portion: Body; Colour: Black
892	1	Ploughzone	RWE	Factory Slip - Banded	Hollowware	Visible motif is a narrow band at rim; Portion: Rim; Colour: Blue

### Stage 3 Ceramic Inventory

Taggart Site (BaHb-19)

#### Context

Cat#	Qty	Stratum	Ware	Motif	Form	Comments
893	2	Ploughzone	RWE	Factory Slip - Banded	Hollowware	Visible motif is narrow bands; Portion: Body; Colour: Blue
894	2	Ploughzone	RWE	Undecorated	Indeterminate	Exfoliated; Portion: Rim
895	10	Ploughzone	RWE	Undecorated	Flatware	Exfoliated; Portion: Body
896	1	Ploughzone	RWE	Undecorated	Flatware	Surface completely exfoliated; Portion: Footring
897	2	Ploughzone	Unidentifiable	Undecorated	Flatware	Surface completely exfoliated; Portion: Footring
898	1	Ploughzone	RWE	Undecorated	Teas	Small fragment; Portion: Rim
899	1	Ploughzone	RWE	Edgeware - General	Flatware	Portion: Brim; Colour: Blue
900	13	Ploughzone	RWE	Undecorated	Indeterminate	Exfoliated; Portion: Body
901	1	Ploughzone	Ironstone	Undecorated	Flatware	Portion: Brink
902	5	Ploughzone	Ironstone	Undecorated	Flatware	Exfoliated; Portion: Body
903	9	Ploughzone	Ironstone	Undecorated	Indeterminate	Exfoliated; Portion: Body
904	1	Ploughzone	Ironstone	Moulded - General	Flatware	Small exfoliated fragment; Portion: Rim
905	1	Ploughzone	Ironstone	Undecorated	Teacup	Exfoliated; Portion: Footring
906	1	Ploughzone	Unidentifiable	Undecorated	Indeterminate	Small exfoliated fragment; Portion: Rim
907	4	Ploughzone	Unidentifiable	Undecorated	Indeterminate	Small exfoliated fragments; Portion: Body
908	2	Ploughzone	Unidentifiable	Undecorated	Indeterminate	Exfoliated; Portion: Indeterminate
909	1	Ploughzone	Yellow Ware	Undecorated	Hollowware	Exfoliated; Portion: Rim
910	1	Ploughzone	Buff Earthenware	Rockingham	Hollowware	Exfoliated; Portion: Body; Colour: Brown
911	1	Ploughzone	Jackfield	Undecorated	Teapot	Exfoliated; Portion: Footring
912	7	Ploughzone	Red Earthenware - Coarse	Glazed	Hollowware	One side glazed, other exfoliated; Portion: Body; Colour: Brown
<b>515-215 (n=39)</b>						
920	1	Ploughzone	RWE	Hand Painted - Late Palette	Saucer	Motif is a narrow blue band at rim. Below this a wide red band with floral in black applied on top; Portion: Rim; True
921	1	Ploughzone	RWE	Hand Painted - Late Palette	Saucer	Motif is a narrow black band at rim. Below this is floral in green; Portion: Rim; Colours: Black; Green
922	1	Ploughzone	RWE	Hand Painted - Late Palette	Saucer	Motif is floral; Portion: Body; True
923	2	Ploughzone	RWE	Spongeware	Saucer	Portion: Body; Colour: Blue
924	1	Ploughzone	RWE	Transfer Print - Willow Pattern	Flatware	Portion: Brink; Colour: Blue
925	2	Ploughzone	RWE	Transfer Print - General	Flatware	Portion: Body; Colour: Blue
926	1	Ploughzone	RWE	Transfer Print - General	Flatware	Exfoliated; Portion: Footring; Colour: Purple
927	1	Ploughzone	RWE	Transfer Print - General	Flatware	Portion: Body; Colour: Purple
928	1	Ploughzone	RWE	Unidentified	Flatware	Surface completely exfoliated, blue glaze along rim edge; Portion: Rim; Colour: Blue
929	1	Ploughzone	RWE	Factory Slip - General	Hollowware	Visible motif is part of a wide blue band; Portion: Body; Colour: Blue
930	1	Ploughzone	Ironstone	Undecorated	Teacup	Exfoliated; Portion: Footring



### Stage 3 Ceramic Inventory

Taggart Site (BaHb-19)

#### Context

Cat#	Qty	Stratum	Ware	Motif	Form	Comments
931	1	Ploughzone	Ironstone	Undecorated	Teacup	Exfoliated; Portion: Base
932	1	Ploughzone	Ironstone	Undecorated	Flatware	Exfoliated; Portion: Rim
933	1	Ploughzone	Ironstone	Undecorated	Indeterminate	Exfoliated; Portion: Rim
934	2	Ploughzone	Ironstone	Undecorated	Indeterminate	Exfoliated; Portion: Body
935	2	Ploughzone	RWE	Undecorated	Flatware	Exfoliated; Portion: Rim
936	3	Ploughzone	RWE	Undecorated	Flatware	Exfoliated; Portion: Body
937	6	Ploughzone	RWE	Undecorated	Indeterminate	Small exfoliated fragments; Portion: Body
938	6	Ploughzone	Unidentifiable	Undecorated	Indeterminate	Small exfoliated fragments; Portion: Body
939	1	Ploughzone	Red Earthenware - Coarse	Glazed	Hollowware	Exterior not glazed. Interior glazed; Portion: Body; Colour: Dark Brown
940	1	Ploughzone	Red Earthenware - Coarse	Glazed	Hollowware	One side glazed, other exfoliated; Portion: Body; Colour: Brown
941	2	Ploughzone	Red Earthenware - Coarse	Unidentified	Hollowware	Exterior not glazed. Interior exfoliated; Portion: Body
<b>520-170 (n=3)</b>						
950	1	Ploughzone	Ironstone	Moulded - Repeating Image	Hollowware	Thick bodied; Portion: Body
951	1	Ploughzone	Semi Porcelain	Undecorated	Teas	Portion: Body
952	1	Ploughzone	Red Earthenware - Coarse	Glazed	Hollowware	One side glazed, other exfoliated; Portion: Body; Colour: Brown
<b>520-180 (n=2)</b>						
960	2	Ploughzone	RWE	Undecorated	Flatware	Exfoliated; Portion: Body
<b>520-190 (n=8)</b>						
970	1	Ploughzone	RWE	Transfer Print - General	Teacup	Pattern is a narrative scene. Exfoliated; Portion: Body; Colour: Blue
971	1	Ploughzone	Ironstone	Transfer Print - Flow	Saucer	Exfoliated; Portion: Body; Colour: Blue
972	2	Ploughzone	RWE	Undecorated	Flatware	Exfoliated; Portion: Body
973	1	Ploughzone	Ironstone	Undecorated	Flatware	Exfoliated; Portion: Body
974	1	Ploughzone	Red Earthenware - Coarse	Glazed	Hollowware	Rim top flat and partially glazed. Body exterior glazed. Interior and rim exterior exfoliated; Portion: Rim; Colour: Brown
975	2	Ploughzone	Red Earthenware - Coarse	Glazed	Hollowware	One side glazed, other exfoliated; Portion: Body; Colour: Brown
<b>520-200 (n=9)</b>						
980	1	Ploughzone	RWE	Transfer Print - General	Flatware	Portion: Body; Colour: Blue
981	2	Ploughzone	RWE	Unidentified	Flatware	Portion: Body; Colour: Blue
982	1	Ploughzone	Ironstone	Moulded - General	Teacup	Portion: Footring
983	1	Ploughzone	Unidentifiable	Undecorated	Indeterminate	Small exfoliated fragment; Portion: Rim
984	2	Ploughzone	RWE	Undecorated	Indeterminate	Exfoliated; Portion: Body
985	1	Ploughzone	Buff Earthenware	Rockingham	Hollowware	Exfoliated; Portion: Body; Colour: Brown
986	1	Ploughzone	Red Earthenware - Coarse	Glazed	Hollowware	One side glazed, other exfoliated; Portion: Body; Colour: Brown

## Stage 3 Ceramic Inventory

Taggart Site (BaHb-19)

### Context

Cat#	Qty	Stratum	Ware	Motif	Form	Comments
<b>520-210 (n=31)</b>						
990	1	Ploughzone	RWE	Transfer Print - Willow Pattern	Plate - General	Portion: Rim; Colour: Blue
991	1	Ploughzone	RWE	Transfer Print - Willow Pattern	Flatware	Portion: Rim; Colour: Blue
992	1	Ploughzone	RWE	Transfer Print - Willow Pattern	Flatware	Portion: Brink; Colour: Blue
993	2	Ploughzone	RWE	Transfer Print - General	Flatware	Exfoliated; Portion: Body; Colour: Blue
994	1	Ploughzone	RWE	Transfer Print - General	Teacup	Pattern on exterior is a narrative scene. Pattern on interior might be geometric; Portion: Body; Colour: Blue
995	1	Ploughzone	RWE	Transfer Print - General	Flatware	Exfoliated; Portion: Footring; Colour: Purple
996	1	Ploughzone	RWE	Spongeware	Saucer	Portion: Body; Colour: Blue
997	1	Ploughzone	Unidentifiable	Unidentified	Indeterminate	Small exfoliated fragment; Portion: Body; Colour: Black
998	1	Ploughzone	RWE	Undecorated	Indeterminate	Small exfoliated fragment; Portion: Rim
999	7	Ploughzone	RWE	Undecorated	Flatware	Exfoliated; Portion: Body
1000	10	Ploughzone	RWE	Undecorated	Indeterminate	Exfoliated; Portion: Body
1001	1	Ploughzone	Ironstone	Moulded - Repeating Image	Teacup	Motif is foliage; Portion: Body
1002	1	Ploughzone	Ironstone	Undecorated	Hollowware	Exfoliated; Portion: Footring
1003	2	Ploughzone	Red Earthenware - Coarse	Glazed	Hollowware	1 x fragment exterior partially glazed, interior exfoliated. 1 x fragment one side glazed, other exfoliated; Portion: Body; Colour: Brown
<b>520-220 (n=10)</b>						
1010	1	Ploughzone	RWE	Hand Painted - Late Palette	Teacup	Motif is floral; Portion: Body; Colour: Red
1011	1	Ploughzone	RWE	Transfer Print - Willow Pattern	Flatware	Portion: Footring; Colour: Blue
1012	1	Ploughzone	RWE	Transfer Print - General	Flatware	Portion: Body; Colour: Blue
1013	1	Ploughzone	RWE	Factory Slip - General	Hollowware	Portion: Body; Colour: Blue
1014	2	Ploughzone	RWE	Undecorated	Flatware	Exfoliated; Portion: Body
1015	1	Ploughzone	RWE	Undecorated	Indeterminate	Small exfoliated fragment; Portion: Body
1016	2	Ploughzone	Ironstone	Undecorated	Indeterminate	Exfoliated; Portion: Body
1017	1	Ploughzone	Red Earthenware - Coarse	Glazed	Hollowware	Exterior not glazed. Interior glazed; Portion: Body; Colour: Dark Brown
<b>530-180 (n=2)</b>						
1020	1	Ploughzone	RWE	Undecorated	Flatware	Exfoliated; Portion: Body
1021	1	Ploughzone	Red Earthenware - Coarse	Glazed	Hollowware	One side glazed, other exfoliated; Portion: Body; Colour: Brown
<b>530-190 (n=2)</b>						
1030	1	Ploughzone	RWE	Spongeware	Teacup	Motif is open spongeware; Portion: Rim; Colour: Blue

## Stage 3 Ceramic Inventory

Taggart Site (BaHb-19)

Context						
Cat#	Qty	Stratum	Ware	Motif	Form	Comments
1031	1	Ploughzone	RWE	Hand Painted - Late Palette	Teacup	Motif is floral; Portion: Body; Colour: Green
530-200 (n=4)						
1040	2	Ploughzone	RWE	Undecorated	Flatware	Exfoliated; Portion: Body
1041	2	Ploughzone	RWE	Undecorated	Indeterminate	Small exfoliated fragments; Portion: Body
530-210 (n=10)						
1050	1	Ploughzone	RWE	Transfer Print - General	Teacup	Pattern on interior is geometric and floral. Pattern on exterior might be botanical. Exfoliated; Portion: Body; Colour: Blue
1051	1	Ploughzone	RWE	Spongeware	Saucer	Portion: Body; Colour: Blue
1052	1	Ploughzone	RWE	Undecorated	Indeterminate	Exfoliated; Portion: Body
1053	1	Ploughzone	Ironstone	Moulded - General	Flatware	Motif is moulded botanical with purple applied on top; Portion: Rim; Colour: Purple
1054	1	Ploughzone	Ironstone	Undecorated	Hollowware	Portion: Rim
1055	2	Ploughzone	Ironstone	Undecorated	Hollowware	Portion: Body
1056	1	Ploughzone	Ironstone	Undecorated	Flatware	Exfoliated; Portion: Body
1057	1	Ploughzone	Red Earthenware - Coarse	Glazed	Hollowware	Rim top glazed, interior and exterior exfoliated; Portion: Rim; Colour: Dark Brown
1058	1	Ploughzone	Red Earthenware - Coarse	Glazed	Hollowware	One side glazed, other exfoliated; Portion: Body; Colour: Dark Brown
530-220 (n=3)						
1060	1	Ploughzone	Ironstone	Undecorated	Teacup	Exfoliated; Portion: Footring
1061	1	Ploughzone	RWE	Undecorated	Indeterminate	Exfoliated; Portion: Body
1062	1	Ploughzone	Stoneware - Coarse	Salt-glazed	Hollowware	Exterior salt-glazed. Interior slipped; Portion: Body; Colour: Brown
530-230 (n=2)						
1070	1	Ploughzone	RWE	Spongeware	Teacup	Portion: Body; Colour: Blue
1071	1	Ploughzone	RWE	Undecorated	Indeterminate	Exfoliated; Portion: Body
540-200 (n=1)						
1080	1	Ploughzone	RWE	Undecorated	Indeterminate	Small exfoliated fragment; Portion: Body
540-210 (n=2)						
1090	1	Ploughzone	Ironstone	Undecorated	Indeterminate	Portion: Footring
1091	1	Ploughzone	Ironstone	Undecorated	Flatware	Exfoliated; Portion: Body
540-220 (n=3)						
1100	1	Ploughzone	RWE	Transfer Print - General	Flatware	Pattern is botanical; Portion: Brink; Colour: Dark Brown
1101	1	Ploughzone	RWE	Transfer Print - General	Flatware	Portion: Body; Colour: Blue
1102	1	Ploughzone	RWE	Undecorated	Flatware	Exfoliated; Portion: Body

### Stage 3 Ceramic Inventory

Taggart Site (BaHb-19)

Context						
Cat#	Qty	Stratum	Ware	Motif	Form	Comments
<b>Surface (n=34)</b>						
100	1		RWE	Hand Painted - Late Palette	Saucer	Motif is floral; Portion: Body; Colours: Black; Green
101	1		RWE	Hand Painted - Late Palette	Teacup	Motif is floral; Portion: Body; True
102	2		RWE	Spongeware	Saucer	Portion: Body; Colour: Blue
103	1		RWE	Transfer Print - Willow Pattern	Flatware	Portion: Rim; Colour: Blue
104	1		RWE	Edgeware - Straight Unmoulded	Plate - General	Portion: Rim; Colour: Blue
105	1		RWE	Factory Slip - Banded	Hollowware	Portion: Rim; Colour: Blue
106	1		Ironstone	Spongeware	Teacup	Open spongeware that extends partially onto interior. Body is also panelled; Portion: Rim; Colour: Blue
107	1		Ironstone	Transfer Print - Flow	Flatware	Visible pattern is botanical; Portion: Body; Colour: Blue
108	1		Ironstone	Undecorated	Teacup	Portion: Rim
109	1		Ironstone	Undecorated	Saucer	Portion: Footring
110	1		Ironstone	Undecorated	Saucer	Portion: Footring
111	1		Ironstone	Undecorated	Indeterminate	Surface completely exfoliated; Portion: Footring
112	1		Ironstone	Undecorated	Hollowware	Thick bodied. Large vessel; Portion: Body
113	6		Ironstone	Undecorated	Flatware	Exfoliated; Portion: Body
114	1		Ironstone	Undecorated	Teacup	Exfoliated; Portion: Footring
115	4		RWE	Undecorated	Flatware	Exfoliated; Portion: Body
116	1		RWE	Undecorated	Indeterminate	Folded footring; Portion: Footring
117	3		RWE	Undecorated	Indeterminate	Small exfoliated fragments; Portion: Body
118	3		Unidentifiable	Undecorated	Indeterminate	Exfoliated; Portion: Body
119	2		Red Earthenware - Coarse	Glazed	Hollowware	1 x fragment both sides glazed. 1 x one side glazed, other exfoliated; Portion: Body; Colour: Brown
<b>Grand Total : 1111 artifacts</b>						