

**STAGE 1 AND 2 ARCHAEOLOGICAL ASSESSMENT OF
MELANCTHON PIT EXPANSION,
PART OF THE EAST HALF OF LOT 13 AND THE EAST HALF OF LOT 14, CONCESSION 4 OLD SURVEY,
TOWNSHIP OF MELANCTHON, DUFFERIN COUNTY, ONTARIO**

SUPPLEMENTARY DOCUMENTATION

Prepared for:

Duivenvoorden Haulage Ltd.
3425 Ninth Line
Innisfil, ON L95 3Z6
T 705-436-4999

Archaeological Licence P449 (Bhardwaj)
Ministry of Tourism, Culture and Sport PIF P449-0195-2018
ASI File: 17PL-195

2 October 2018



TABLE OF CONTENTS

TABLE OF CONTENTS	i
1.0 DETAILED SITE LOCATION	1
2.0 SUPPLEMENTARY DOCUMENTATION MAPS	1

List of Figures

Figure 1: Location of Site BaHb-19	2
Figure 2: Sketch Map of Site BaHb-19.....	3



1.0 DETAILED SITE LOCATION

Project: Stage 1 and 2 Archaeological Assessment of the Melancthon Pit Expansion, part of the east half of Lot 13 and the east half of Lot 14, Concession 4 Old Survey, Township of Melancthon, Dufferin County

ASI File: 17PL-195

MTCS PIF: P449-0195-2018

GPS Model & Type: Garmin eTrex Legend & Garmin Oregon 450

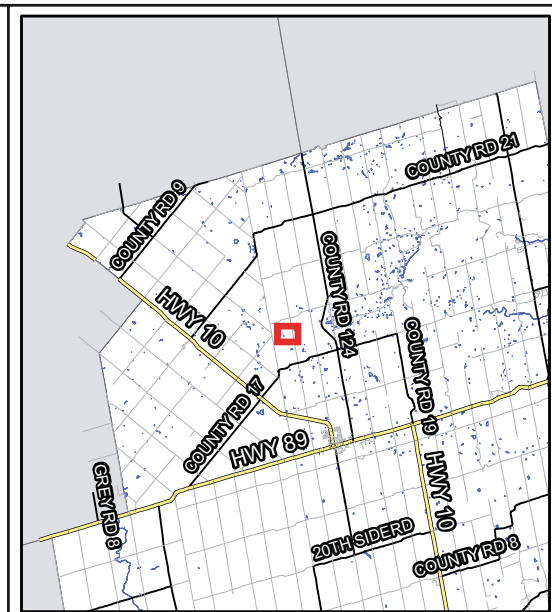
UTM Grid Zone: 17T **Datum:** NAD 83 **Method of Correction:** n/a

Site	UTM Coordinates	Error (+/-)	Elev (asl)	Coordinate Type
BaHb-19	560871 4888502	5 m	511 m	Site centre
	560814 4888529	5 m	511 m	North site limit
	560874 4888481	5 m	511 m	South site limit
	560893 4888505	5 m	511 m	East site limit
	560851 4888503	5 m	511 m	West site limit
Off-Site Datum	560972 4888459	5 m	513 m	Hydro pole

2.0 SUPPLEMENTARY DOCUMENTATION MAPS

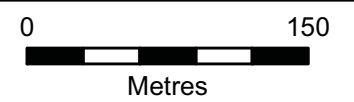
The following figures show the detailed locations of all identified findspots and sites within the scope of this Stage 2 assessment. Site descriptions and other relevant information relating to all archaeological work conducted for the project are contained in our accompanying Stage 1 and 2 assessment report submitted to the Ministry of Tourism and Culture and Sport (ASI 2018).





- Subject Property
- BaHb-19 Site Location

BASE: Service Layer Credits: Source: Esri, DigitalGlobe, GeoEye, Earthstar Geographics, CNES/Airbus DS, USDA, USGS, AeroGRID, IGN, and the GIS User Community

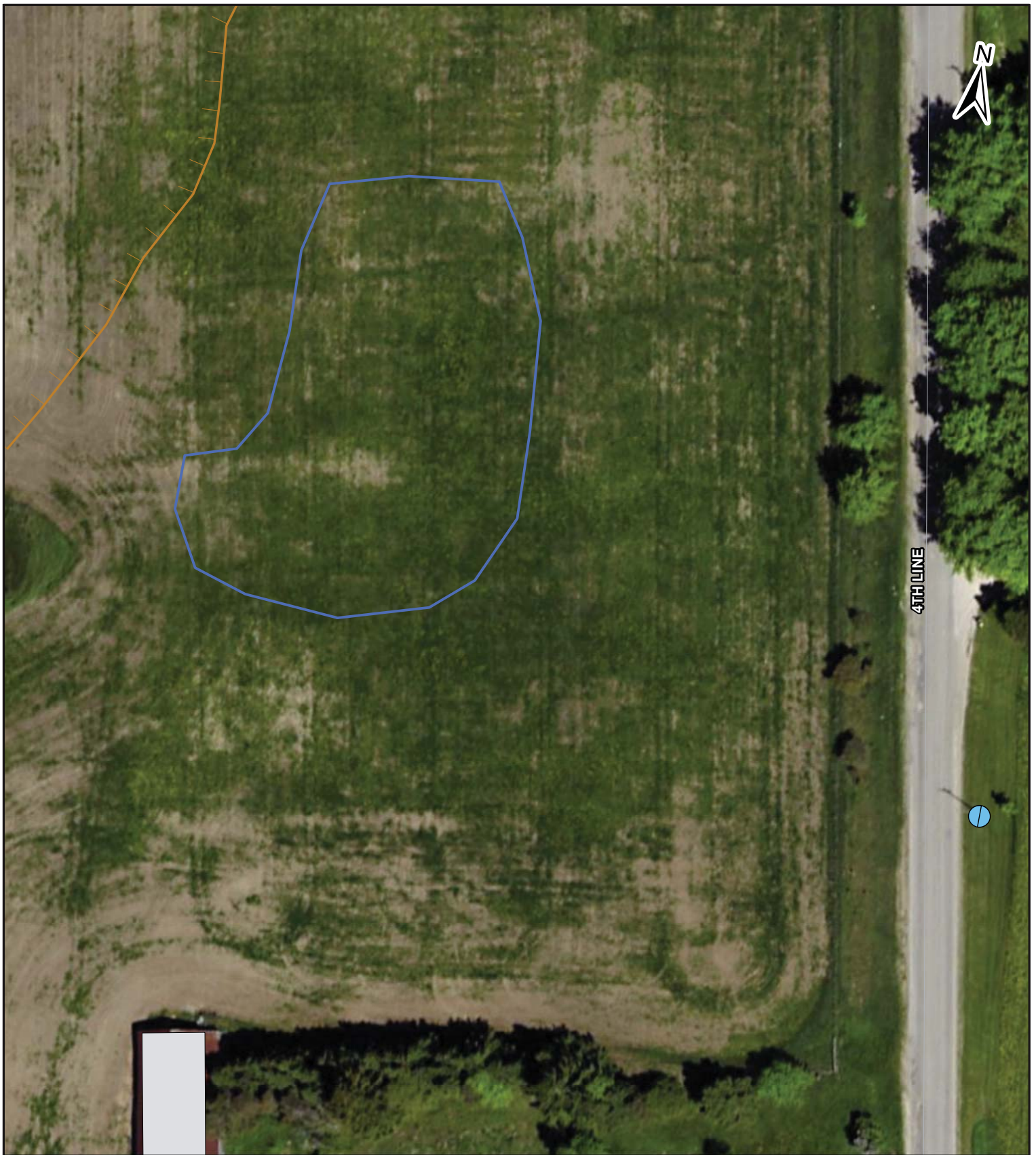


ASI PROJECT NO.: 17PL-195 DRAWN BY: JF
 DATE: 7/3/2018 FILE: 17PL195_SD_fig1



Archaeological & Cultural Heritage Services
 528 Bathurst Street Toronto, ONTARIO M5S 2P9
 416-966-1069 | F416-966-9723 | asiheritage.ca

Figure 1: Location of Site BaHb-19



- BaHb-19 Site Limit
- | | Slope
- Hydro Pole
- Building

Archaeological & Cultural Heritage Services
 528 Bathurst Street Toronto, ONTARIO M5S 2P9
 416-966-1069 | F416-966-9723 | asiheritage.ca

Datum and Projection
NAD 83 UTM 17T

0 25
 Metres

ASI PROJECT NO.: 17PL-195 DRAWN BY: JF
 DATE: 7/6/2018 FILE: 17PL195_SD_fig2_SiteSketch

Figure 2: Sketch Map of Site BaHb-19