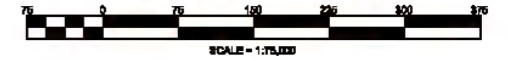






# SCHEDULE G AQUIFER VULNERABILITY AND WELLHEAD PROTECTION AREAS

## OFFICIAL PLAN FOR TOWNSHIP OF MELANCTHON



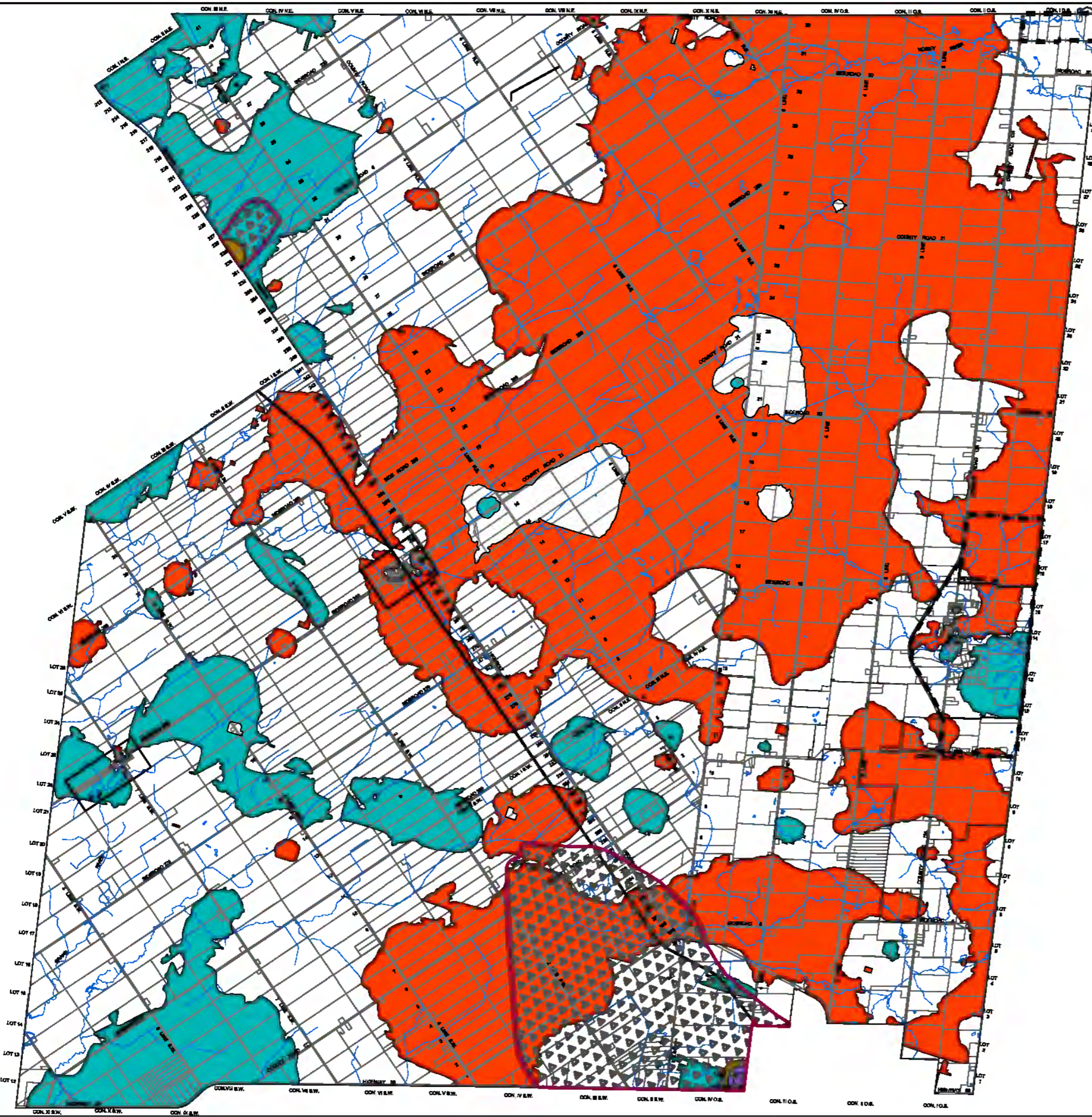
-  LOW VULNERABILITY
-  MEDIUM VULNERABILITY
-  HIGH VULNERABILITY

### WELLHEAD PROTECTION AREAS

-  WHPA - A
-  WHPA - B
-  WHPA - C
-  WHPA - D

See Section 4.4.2.

-  NIAGARA ESCARPMENT  
DEVELOPMENT CONTROL AREA



AUGUST, 2014

