




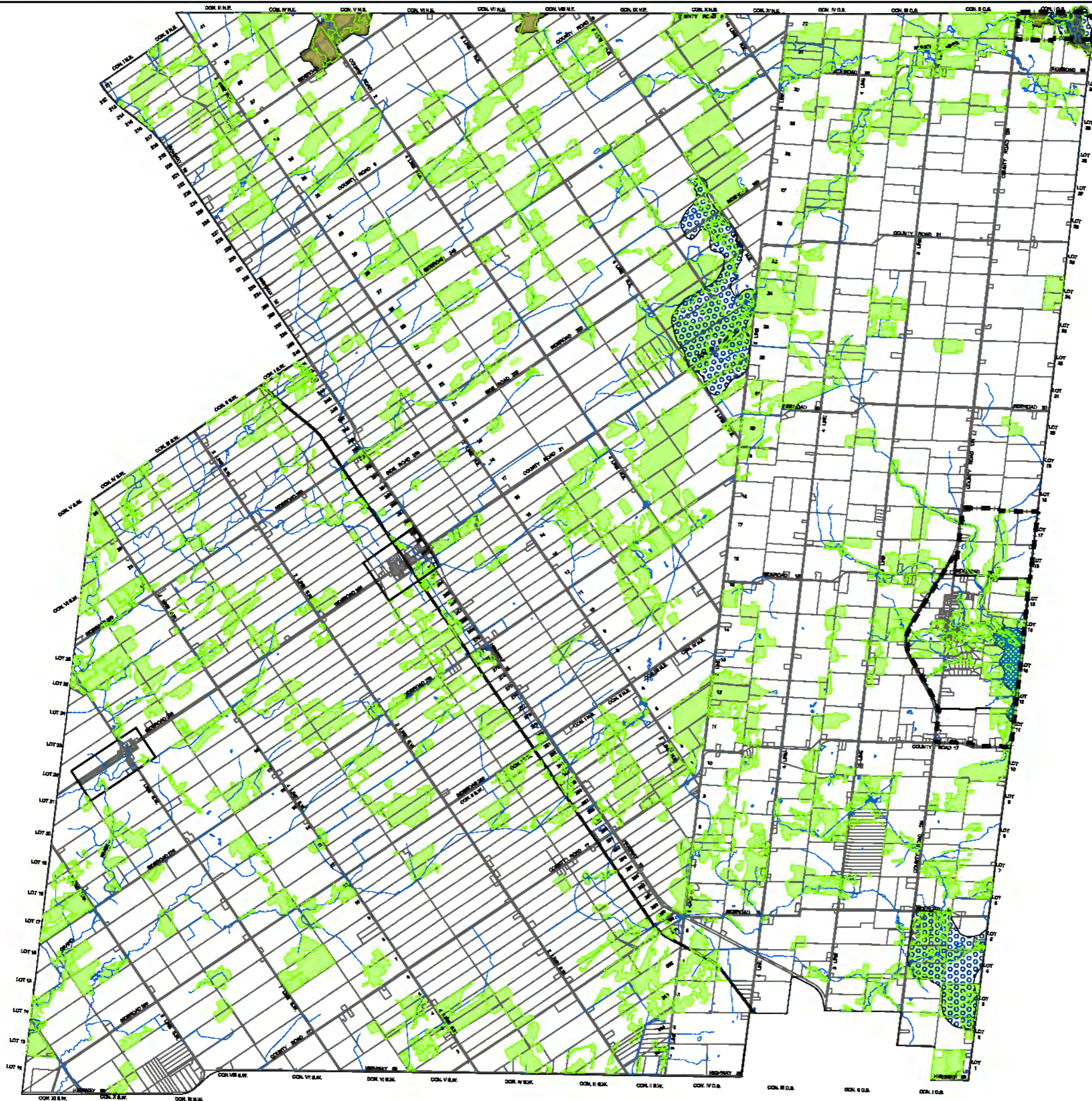


# SCHEDULE E NATURAL HERITAGE 2 WOODLANDS, WILDLIFE HABITAT AND ANSI

## OFFICIAL PLAN FOR TOWNSHIP OF MELANCTHON



-  SIGNIFICANT WOODLANDS  
- PRIMARILY 20+ HECTARES
-  SIGNIFICANT WILDLIFE HABITAT  
- DEER WINTERING AREAS
-  SIGNIFICANT WILDLIFE HABITAT  
- DEER WINTERING YARDS
-  SIGNIFICANT ANSI
-  NIAGARA ESCARPMENT  
DEVELOPMENT CONTROL AREA



AUGUST, 2014

